

MOSSBERG®
ARM YOURSELF.

2019 CATALOG





CEO LETTER / TABLE OF CONTENTS



When my great-grandfather opened the doors of O.F. Mossberg & Sons in 1919, he instilled a set of corporate operating values that we still live by today: Always take care of your employees; always embrace change; always listen to your customers. He coupled those operating values with a commitment to a simple philosophy of providing customers with “More Gun for the Money.” That sort of forward thinking is what allows us to celebrate 100 years of U.S. firearm manufacturing.

We have provided and continue to provide innovative, rugged, and durable firearms. From the introduction of the Brownie trapper pistol back in 1919, to the release of the iconic, battle-proven model 500® pump-action shotgun in 1962, to this year’s unveiling of what we consider to be the ultimate concealed-carry pistol, we provide model designs that adapt to the ever-changing needs of the defense industry and the modern sportsman.

On behalf of the Mossberg family, I would like to thank you for your dedication to the Mossberg® brand. It’s you whom we design and build for, striving to fulfill your needs and keep you armed with the most reliable firearms.

- A. Iver Mossberg, Jr.
Chief Executive Officer



NEW PRODUCTS FOR 2019	6-9
HANDGUNS	10-15
SPECIALTY FIREARMS	16-25
SECURITY & COMPETITION SHOTGUNS	26-43
FIELD & SPORTING SHOTGUNS	44-65
BOLT-ACTION & LEVER-ACTION RIFLES	66-85
SEMI-AUTOMATIC RIFLES	86-97
ACCESSORIES	98-105
ARM YOURSELF WITH SAFETY	106

This document is for informational purposes only and may contain errors, inadvertent omissions or typographical errors. Mossberg shall not be liable to you for any claim whatsoever arising from the inaccuracy. Company names other than O.F. Mossberg & Sons, Inc. mentioned herein, and such other companies' respective product names may be trademarks of such respective companies. The absence herein of any product name, mark, logo, etc. does not constitute a waiver by O.F. Mossberg & Sons, Inc. of any intellectual property right that it may own.

! **WARNING:** Use of firearm products and accessories can expose you to chemicals including lead, which are known to the State of California to cause cancer, birth defects or other reproductive harm. For more information go to www.P65Warnings.ca.gov.

O.F. MOSSBERG & SONS



INNOVATION HAS ALWAYS BEEN OUR TARGET.

It began in 1919 with a simple dream to manufacture durable and reliable firearms that the working class could afford. As simple as that dream was, it was fairly ambitious. After all, Oscar Frederick Mossberg, a Swedish immigrant, was 53 years old. But he was talented and determined. So armed with experience, innovative designs, and keen knowledge of the industry, he and his two sons, Harold and Iver, began O.F. Mossberg & Sons, Inc.

Their first gun was the Brownie, a four-shot, 22-caliber pistol that was durable and reliable. It firmly cemented Mossberg's reputation as a manufacturer of firearms that not only performed well, but were built to last.

The small firm grew quickly, adding over two dozen firearms while developing and improving a generation of bolt-action rifles and shotguns. This would soon position the company as a leader in shooting sports as it launched a variety of innovations within the firearms industry, including the first range-finding telescopic sight.

Oscar Mossberg passed away in 1937. Nonetheless, his sons remained committed to continuing their father's legacy. And in 1941, they started manufacturing training rifles for the U.S. military.

In 1961 Mossberg® introduced the 500® pump-action shotgun. It would prove to be the company's most successful firearm, reaching the 10 million mark faster than any other, making it one of the world's most popular and prolific firearms manufactured.

Mossberg's innovations continued through the 1970s and '80s. The 500 led the way to Mossberg's military 500, 590, and 590A1, the only pump-action shotguns ever to meet all U.S. Military MIL-SPEC 3443 requirements. In 1988, the 835® Ulti-Mag® pump-action shotgun brought to market the first firearm chambered for 3.5" shells, providing hardcore turkey and waterfowl hunters with the tool to succeed.

Recent Mossberg innovations to the firearm world have been the release of the MVP, the first bolt-action rifle to reliably feed from standard AR/M14 magazines. This patented system provided the market a gun with incredible accuracy and reliability, coupled with the convenience to utilize America's most popular magazines.



Mossberg next expanded the magazine-fed shotgun world with the release of its Model 590M, a double-stack detachable magazine on its battle-proven 590 shotgun platform.

A lot has happened in Mossberg's first 100 years. Yet through it all, they've proudly remained family owned and operated. And this year, the fourth generation of Mossbergs are excited to launch a new firearm to celebrate a century of innovation, passion, and dedication. It's a subcompact 9mm pistol called the MC1sc.

This exciting new subcompact pistol ushers in a new era for the Mossberg family and expands its robust line of firearms. The innovative MC1sc was designed to outperform the industry-leading 9mm subcompact while continuing the Mossberg tradition of durability and dependability. Exactly what you've come to expect from a Mossberg.

MOSSBERG®



MC1sc
#89001 // P. 12

INTRODUCING THE MC1sc

It's here. Our first subcompact 9mm pistol. A pistol built for concealment thanks to its slim, dehorned profile. A pistol that weighs a mere 22 ounces when fully loaded. A pistol with polymer construction that makes it lightweight yet durable. A pistol engineered to outperform other 9mm subcompacts. This is the MC1sc.

SECURITY SHOTGUNS



500 Persuader Retrograde
#50429 // P. 28



500 ATI Tactical
#50431 // P. 29



590 Thunder Ranch
#52145 // P. 30



590A1 Retrograde
#51665 // P. 34



930 Thunder Ranch
#85331 // P. 38



SPECIALTY PUMP-ACTION FIREARMS



590 Nightstick
#50651 // P. 18



590 Shock 'N' Saw
#50647 // P. 19



590 Shockwave SPX
#50648 // P. 18



590 Shockwave - Crimson Trace Lasersaddle™
#50638 // P. 19



590 Shockwave 18.5"
#50639 // P. 19

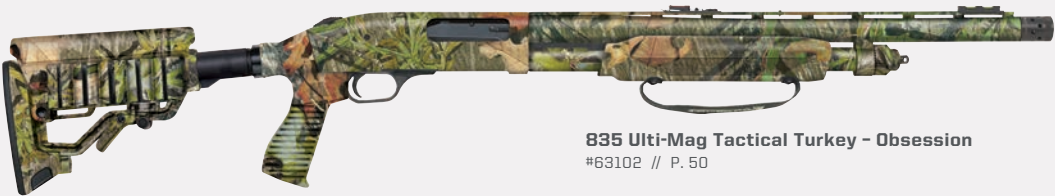
FIELD SHOTGUNS



500 Turkey - Bottomland
#50109 // P. 46



500 Field/Deer Combo
#54047 // P. 48



835 Ulti-Mag Tactical Turkey - Obsession
#63102 // P. 50



835 Ulti-Mag Field/Deer Combo
#68224 // P. 50



500 Bantam FLEX Field/Deer Combo
#54330 // P. 52



500 Bantam FLEX
#54334 // P. 52



935 Magnum - Turkey
#81046 // P. 58

RIFLES



Patriot - Synthetic/Cerakote
#28069 // P. 68



Patriot Predator - Flat Dark Earth
#28014 // P. 71



Patriot Predator - Brown Cerakote/True Timber Strata
#28046 // P. 71



MVP LR - Thunder Ranch
#28041 // P. 76



Mossberg International 702 Plinkster - Scoped Combo
#37075 // P. 96



HANDGUNS

MOSSBERG

INTRODUCING THE MC1sc™



INTRODUCING THE MOSSBERG MC1sc SUBCOMPACT 9MM PISTOL

Trouble is unpredictable. It shows up without warning. It rears its ugly head when and where you least expect it. Trouble has no conscience. No regrets. No remorse. So be prepared. And be protected. Introducing the MC1sc Subcompact 9mm Pistol by Mossberg. Combining optimal shootability with superior ergonomics, the MC1sc features an optimized grip angle for easier targeting, a flat-profile trigger for an improved pull, and our exclusive Safe Takedown System™: a design that does not require the user to pull the trigger during the disassembly process. The MC1sc Subcompact 9mm Pistol. Be ready to strike back.

MOSSBERG
ARM YOURSELF.



**BUILT TO CARRY.
MADE TO PROTECT.**

The MC1sc was built for concealment with its slim, dehorned profile that allows for a snag-free draw. Weighing only 22 ounces fully loaded, its lightweight and durable polymer construction is perfect for everyday carry. And with its grip palm swell, the MC1sc will feel natural and comfortable in your hand. Grip panels are integrated with aggressive texturing for added control. It all adds up to a firearm that performs better than other 9mm subcompacts.



Superior Ergonomics
Natural and comfortable in your hand thanks to the grip palm swell. Grip panels are integrated with aggressive texturing for added control for a confident, firm grip under a variety of conditions.



Flat-Profile Trigger
The MC1sc trigger (approx. 6 lbs pull) has an integrated blade safety, a short, tactile reset, and reduced overtravel. It features a crisp, clean break and smooth take-up, which means less hand movement for a truer, more accurate shot.



Snag-Free Dovetail Sights
Standard snag-free dovetail white three-dot sights (Sig #8 compatible) offer easier target acquisition and quicker draw. TRUGLO® Tritium PRO™ sights are also available as a factory option.



VIRIDIAN Laser Equipped Model: 89004
A tiny laser sight tucks neatly between the trigger guard and muzzle, with no overhang. You can turn your laser on with a push of a button when you draw the weapon.



Clear-Count™ Polymer Magazines
Each MC1sc ships with two Mossberg Clear-Count magazines: A flush-fit 6-round magazine and an extended 7-round magazine. Mossberg Clear-Count magazines feature easy-to-remove floor plates, and high-visibility followers made out of a lubricious polymer compound that offers low friction and high wear-resistance while providing easy at-a-glance assessment of the rounds in the magazine. All models have a reversible magazine release.

MC1sc Safe Takedown System™

The MC1sc is equipped with our exclusive Safe Takedown System. It requires the user to make the handgun completely safe by removing the striker assembly before removing the slide. The user is not required to pull the trigger in order to disassemble the handgun for cleaning and maintenance.



1. Remove the magazine and lock open and clear the action. Push the rear slide plate button and slide it down.



2. Once the slide plate is removed, the orange end of the striker assembly will be visible.



3. Close the action by pulling the slide fully rearward and releasing it gently. This will allow the slide to push out the striker assembly.



4. The striker assembly is safely removed from the pistol without ever pulling the trigger. The slide is then pushed forward towards the muzzle, and removed off of the frame.

The patent-pending slide cover plate design is used under license from Strike Industries.

MC1sc ANATOMY

- A.** Safe Takedown System ensures no trigger pull required during disassembly.
- B.** Mossberg signature multi-angle slide serrations for positive slide manipulation.
- C.** Standard snag-free dovetail white three-dot sights for easier target acquisition, windage adjustment, and after-market customization. (Sig #8 compatible.)
- D.** Stainless steel slide with upgraded Diamond-Like Carbon Coating.
- E.** 3.4" barrel with upgraded Diamond-Like Carbon Coating.
- F.** Extended trigger guard for easy access.
- G.** Mossberg flat-profile trigger with integrated blade safety.
- H.** Reversible magazine release.
- I.** Aggressive signature Mossberg grip texturing.
- J.** Palm swell and grip angle provide superior ergonomics.
- K.** Glass-reinforced polymer frame for enhanced durability.
- L.** Mossberg Clear-Count™ polymer 6-round flush-fit and 7-round extended magazines offer low friction and high wear-resistance.



NOTE: Reversible cross-bolt safety equipped on model #89002.

MC1sc MODELS



MC1sc 9mm // #89001



MC1sc CROSS-BOLT SAFETY 9mm // #89002



MC1sc TRUGLO® Tritium PRO™ Sights 9mm // #89003



MC1sc VIRIDIAN® Laser Equipped 9mm // #89004

MC1sc SPECIFICATIONS

Model:	MC1sc
Caliber:	9mm
Action:	Semiautomatic
Frame:	Subcompact
Capacity:	6-Round Flush-Fit / 7-Round Extended
Safety:	Integrated Trigger Blade Safety (Standard) Cross-Bolt Safety (Optional)
Frame:	Polymer, Matte Black
Slide:	416 Stainless Steel, DLC
Barrel:	416 Stainless Steel, DLC
Length:	6.25"
Height:	4.30"
Width:	1.03"
Weight:	19 oz (Unloaded), 22 oz (Loaded)
Barrel Length:	3.40"
Barrel Rifling:	Button Rifled Six Groove
Twist Rate:	1:16 RH Twist
Sight Radius:	5.4"
Front Sight:	White Dot, Drift Adjustable Dovetail Sight
Rear Sight:	Dual White Dot, Drift Adjustable Dovetail Sight
Trigger:	Flat-Profile Trigger
Trigger Pull:	Approx. 6 lbs
Trigger Travel:	.5"



MOSSBERG

SPECIALTY
PUMP-ACTION FIREARMS





NEW 590 Shockwave SPX
12 GA // 6-Shot // #50648

Measuring over 26", the 590 Shockwave pump-action firearms require no NFA paperwork for transfers.



590 Shockwave - Flat Dark Earth
12 GA // 6-Shot // #50653



590 Shockwave
12 GA // 6-Shot // #50659



NEW 590 Nightstick
12 GA // 6-Shot // #50651

TALO
EXCLUSIVE



590 Shockwave JIC
12 GA // 6-Shot // #50656



The JIC series provides durable, portable shotgun storage solutions for easy stowing or transport.

Defend your domain with the Mossberg 590 Shockwave. Small in size but always big when it comes to performance, these pump-action firearms are fun to shoot and easy to clean, and although they feature a 14" barrel, do not require any Class III paperwork for transfers.

FEATURES:

- 6-Shot and 7-Shot (18.5" bbl)
- 12 Gauge, 20 Gauge, and .410 Bore
- Bird's-head grip
- Clean-out tube
- Heavy-walled barrel
- Strapped forend
- Matte and Cerakote® finishes
- Drilled and tapped receiver
- Standard features include dual extractors, steel-to-steel lockup, top-mounted ambidextrous safety, twin action bars, and anti-jam elevator



NEW 590 Shock 'N' Saw
12 GA // 6-Shot // #50647



590 Shockwave
20 GA // 6-Shot // #50657



NEW 590 Shockwave 18.5"
12 GA // 7-Shot // #50639



NEW 590 Shockwave - Crimson Trace Lasersaddle™
12 GA // 6-Shot // #50638



590 Shockwave
.410 Bore // 7-Shot // #50649

590® SHOCKWAVE Pump-Action Firearms



The Shockwave bird's-head style pistol grip is uniquely shaped to provide a firm grip and to minimize felt recoil.



The 590 Shockwave's strapped forend keeps the lead hand clear of the muzzle when cycling the action.



The 590 Shockwave's lightweight, 14" barrel, unique grip, and strapped forend make it easy to control from different shooting positions for a wide variety of users.

590 SHOCKWAVE // 3" Chamber

TYPE	ITEM #	GA.	2.75" CAPACITY	BARREL	SIGHTS	CHOKES	OVERALL LENGTH	METAL FINISH	STOCK/FINISH	NOTES	APPROX. WEIGHT
590 SHOCKWAVE // Compact Pump-Action, Strapped Forend											
6-Shot	50659	12	5+1	14.375" Hvy-Walled	Bead	Cylinder Bore	26.37"	Matte Blue	Shockwave Bird's-head Grip	-	5.3 lbs
6-Shot w/Cerakote	50653	12	5+1	14.375" Hvy-Walled	Bead	Cylinder Bore	26.37"	Cerakote (FDE)	Shockwave Bird's-head Grip	-	5.3 lbs
NEW 6-Shot w/Lasersaddle™	50638	12	5+1	14.375" Hvy-Walled	Bead	Cylinder Bore	26.37"	Matte Blue	Shockwave Bird's-head Grip	Includes Crimson Trace Red Dot Lasersaddle	6 lbs
NEW 6-Shot Shock 'N' Saw	50647	12	5+1	14.375" Hvy-Walled; Stand-off	Bead	Cylinder Bore	26.37"	Matte Blue	Shockwave Bird's-head Grip	Railed Forend; Chainsaw Top Handle, Breacher Muzzle, Heat Shield	6.3 lbs
NEW 6-Shot SPX	50648	12	5+1	14.375" Hvy-Walled Stand-off	Bead	Cylinder Bore	26.37"	Matte Blue	Shockwave Bird's-head Grip	Picatinny Rail; 5 Shell Holders; Breacher Muzzle; Heat Shield	6.3 lbs
NEW 7-Shot	50639	12	6+1	18.5" Hvy-Walled	Bead	Cylinder Bore	26.37"	Matte Blue	Shockwave Bird's-head Grip	-	5.5 lbs
6-Shot	50657	20	5+1	14.375" Hvy-Walled	Bead	Cylinder Bore	26.37"	Matte Blue	Shockwave Bird's-head Grip	-	4.95 lbs
6-Shot	50649	.410	5+1	14.375" Hvy-Walled	Bead	Cylinder Bore	26.37"	Matte Blue	Shockwave Bird's-head Grip	-	6.3 lbs

590 JIC SHOCKWAVE – 6-SHOT // Compact Pump-Action, Strapped Forend, Water-Resistant Carrying Tube/Strap

6-Shot – 590 JIC Series w/Cerakote	50656	12	5+1	14.375" Hvy-Walled	Bead	Cylinder Bore	26.37"	Cerakote (Stainless)	Shockwave Bird's-head Grip	Water-Resistant Carrying Tube/Strap (Intl. Orange)	5.3 lbs*
------------------------------------	-------	----	-----	--------------------	------	---------------	--------	----------------------	----------------------------	----------------------------------------------------	----------

590 NIGHTSTICK – 6-SHOT** // Compact Pump-Action

NEW 6-Shot Nightstick	50651	12	5+1	14.375" Hvy-Walled	Bead	Cylinder Bore	26.37"	Matte Blue	Bird's-head Wood Grip	Corn-cob forend w/leather strap	5.25 lbs
------------------------------	-------	----	-----	--------------------	------	---------------	--------	------------	-----------------------	---------------------------------	----------

Requires no stamp for transfers. **Overall Length and Weight:** 590 JIC Shockwave shotgun only. Does not include carrying tube. **LOP:** Length of pull. **Cerakote:** Premium polymer-ceramic protective coating. Cerakote is a registered trademark of Nic Industries, Inc. **FDE:** Flat dark earth colored finish. **Stainless:** Stainless steel-colored finish. Shockwave is a registered trademark of Shockwave Technologies, Inc. All models include a free gun lock. Not all products are available in all states and jurisdictions. Check your state and local regulations.

**DEALERS CAN ONLY ORDER 590 NIGHTSTICK #50651 THROUGH A TALO GROUP DISTRIBUTOR. VISIT WWW.TALOINC.COM FOR MORE INFORMATION.

590M® SHOCKWAVE Pump-Action Firearm

MOSSBERG



NEW 590M Shockwave
12 GA // 10-Round Detachable Magazine // #50208

Combining the world's first production double-stack detachable pump-action magazine with the compact package of a 14" barrel and bird's-head grip, our 590M Shockwave is the best of both worlds.



All-steel magazine release button and housing is optimally positioned in front of the trigger guard for quick, ambidextrous access for reloading — and will not interfere with cycling the action.



590M shotguns and magazines are uniquely designed incorporating stabilizing ribs that engage the magazine directly to the receiver for a sure lockup.



Hardened steel feed lips and over-molded steel shell ramps ensure efficient feeding. Anti-cant rounded follower improves feeding; round limiter improves spring life.

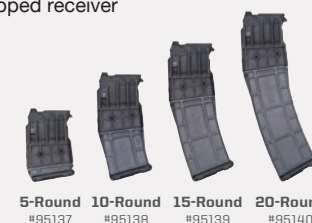


Removable floor plate for easy cleaning; ASTM-A-228 music wire springs improve feeding, increase durability, and prolong service life.

FEATURES:

- 12 Gauge, with 10-round detachable magazine
- Heavy-walled barrel
- Bird's-head grip
- Strapped forend
- Standard features include dual extractors, steel-to-steel lockup, top-mounted ambidextrous safety, and twin action bars
- Drilled and tapped receiver

Accessory Magazines



590M SHOCKWAVE // 2.75" Chamber

TYPE	ITEM #	GA.	2.75" CAPACITY	BARREL	SIGHTS	CHOKES	OVERALL LENGTH	METAL FINISH	STOCK/FINISH	APPROX. WEIGHT
590M SHOCKWAVE										
NEW 11-Shot	50208	12	10+1	14.375"	Bead	Cyl Bore	26.37"	Matte Blue/Logo Embellished Receiver	Raptor Grip/Corn Cob Forend w/Strap	7.75 lbs

Chamber: 590M shotguns require the use of 2.75" shotshells. **Shield:** Heat shield. **Weight:** Calculated with empty mounted 10-round magazine. All models include a free gun lock. Not all products are available in all states and jurisdictions. Check your state and local regulations.

590M Shotguns found on page 32.

590M ACCESSORY MAGAZINES

TYPE	ITEM #	GA.	2.75" CAPACITY	TYPE	DIMENSIONS	MATERIAL/CONSTRUCTION	FEED LIPS	APPROX. WEIGHT
590M MAG-FED ACCESSORY MAGAZINES								
5-Round Magazine	95137	12	5	Double-Stack	2.5"L x 3.5"W x 5.375"H	High-Impact Polymer Tower, with Proprietary Self-Lubricating Polymer Body	Hardened Steel	0.96 lbs
10-Round Magazine	95138	12	10	Double-Stack	2.5"L x 3.5"W x 8.0"H	High-Impact Polymer Tower, with Proprietary Self-Lubricating Polymer Body	Hardened Steel	1.26 lbs
15-Round Magazine	95139	12	15	Double-Stack	2.5"L x 3.5"W x 10.375"H	High-Impact Polymer Tower, with Proprietary Self-Lubricating Polymer Body	Hardened Steel	1.46 lbs
20-Round Magazine	95140	12	20	Double-Stack	2.5"L x 3.5"W x 12.625"H	High-Impact Polymer Tower, with Proprietary Self-Lubricating Polymer Body	Hardened Steel	1.70 lbs

Magazines: Work exclusively with Mossberg 590M Shotguns, using 2.75" Shotshells. **Weights:** Calculated without shotshells. **Patented:** Design components including double-stack design are covered by patents owned by Adaptive Tactical LLC. **Self-lubricating:** Dupont proprietary self-lubricating polymer body improves feeding and reduces internal friction. Not all products are available in all states and jurisdictions. Check your state and local regulations.



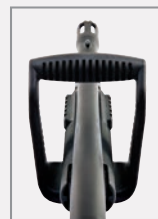
500 Cruiser
12 GA // 8-Shot // #50580



500 Cruiser
12 GA // 6-Shot // #54125



500 Chainsaw
12 GA // 6-Shot // #50460



Chainsaw Handle Top View



500 FLEX Tactical Cruiser
12 GA // 6-Shot // #50673



Reliability. Maneuverability. Compact storage.
It's no wonder that these pump-action firearms are a favorite when it comes to keeping your home and family safe. With a pistol grip and short barrel, the Cruiser models offer ease of navigation in tight and confined spaces.

FEATURES:

- 6-Shot or 8-Shot
- 12 Gauge, 20 Gauge and .410 Bore
- Standard features include dual extractors, steel-to-steel lockup, top-mounted ambidextrous safety, twin action bars, and anti-jam elevator
- Compact
- Chainsaw model offers removable top grip

500 CRUISERS // 3" Chamber											
TYPE	ITEM #	GAUGE/BORE	2.75" CAP.	BARREL	SIGHTS	CHOKES	OVERALL LENGTH	FOREND TYPE	METAL FINISH	STOCK & FINISH	APPROX. WEIGHT
500 CRUISER – 8-SHOT											
8-Shot – Cruiser	50580	12	7+1	20"+ Heat Shield	Bead	Cylinder Bore	30.25"		Blue	Synthetic Pistol Grip (Black)	6.5 lbs
500 CRUISER – 6-SHOT											
6-Shot – Cruiser	54125	12	5+1	18.5" Standoff	White Dot	Cylinder Bore	31"		Matte Blue	Synthetic Pistol Grip (Black)	5.75 lbs
6-Shot – Cruiser	50440	12	5+1	18.5"+ Heat Shield	Bead	Cylinder Bore	31"		Blue	Synthetic Pistol Grip (Black)	5.75 lbs
6-Shot – Cruiser	50450	20	5+1	18.5"	Bead	Cylinder Bore	31"		Blue	Synthetic Pistol Grip (Black)	5.5 lbs
6-Shot – Cruiser	50455	.410	5+1	18.5"	Bead	Cylinder Bore	31"		Blue	Synthetic Pistol Grip (Black)	5.5 lbs
500 CHAINSAW – 6-SHOT // Removable Top Grip, Standoff Barrel, Tri-Rail Forend											
6-Shot – Cruiser/Tri-Rail	50460	12	5+1	18.5" Standoff	White Dot	Cylinder Bore	31"		Matte Blue	Synthetic Pistol Grip (Black)	6 lbs
500 FLEX TACTICAL CRUISER											
500 FLEX Cruiser	50673	12	5+1	18.5" Standoff	White Dot	Cylinder Bore	31"	FLEX Tri-Rail	Matte Blue	FLEX Pistol Grip Synthetic (Black)	6.75 lbs

Tri-Rail: Forend has fully integrated bottom Picatinny rail, and two mini side rails. All models include a free gun lock.

JIC® (JUST IN CASE) SERIES Pump-Action Firearms

500®/590A1™ NFA/CLASS 3 Pump-Action AOWs

MOSSBERG



500 JIC FLEX™
12 GA // 6-Shot // #57340

MOSSBERG FLEX



500 JIC Cruiser®
12 GA // 6-Shot // #51340



500 JIC Mariner®
12 GA // 6-Shot // #52340

Our JIC Cruiser Series pump-action firearms are popular with boaters, campers, and anyone looking for a portable solution for their firearm. The tubes have carrying straps and are water-resistant, and some models also come with a preparedness tool such as a multi-tool or survival kit-in-a-can.

FEATURES:

- 6-Shot
- 12 Gauge
- Water-resistant tubes
- Shockwave model available, see page 20.
- Standard features include dual extractors, steel-to-steel lockup, top-mounted ambidextrous safety, twin action bars, and anti-jam elevator



500 Compact Cruiser
NFA/AOW Pump-Action
12 GA // 3-Shot // #51697



590A1 Compact Cruiser
NFA/AOW Pump-Action
12 GA // 4-Shot // #51664

More than a pump-action firearm, this is also peace of mind. These 12-gauge firearms deliver Mossberg's relentless reliability in a sub-compact package. Defined under the National Firearms Act (NFA) as an Any Other Weapon (AOW), these 3- and 4-shot firearms require only a \$5 tax stamp.

FEATURES:

- 3-Shot (500) or 4-Shot (590A1)
- 12 Gauge
- Parkerized finish
- Defined under the NFA as an AOW
- Requires a \$5 tax stamp for transfer
- Contoured folding strapped foregrip helps mitigate recoil
- ATI pistol grip absorbs recoil energy at the back of the grip
- Standard features include dual extractors, steel-to-steel lockup, top-mounted ambidextrous safety, twin action bars, and anti-jam elevator



To ease cycling operation, the Compact Cruiser's contoured foregrip can either be folded down or tucked up against the magazine tube.



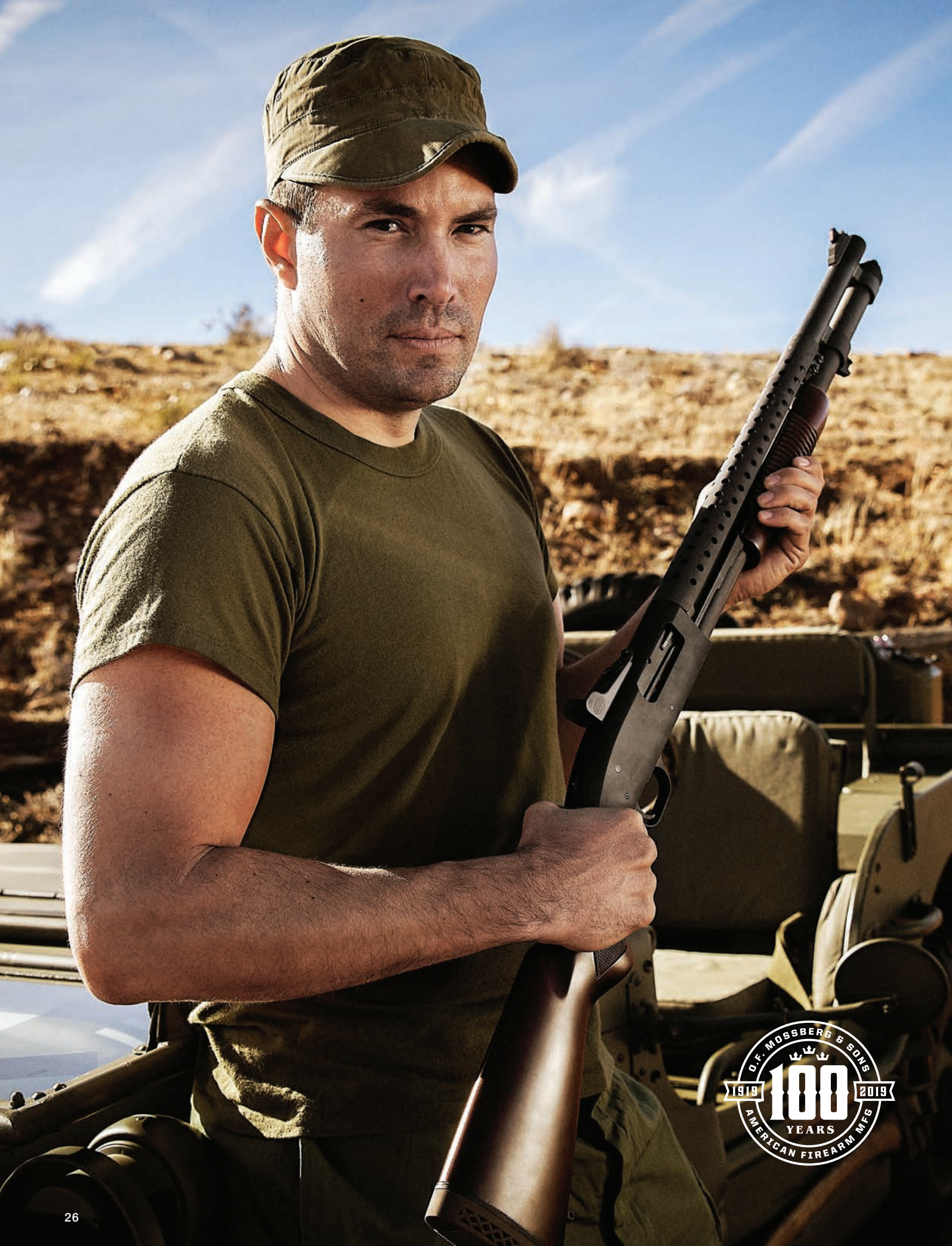
The ergonomically designed ATI® T3 pistol grip found on our Compact Cruiser models absorbs recoil energy at the back of the grip, reducing discomfort to the shooter.

JIC (JUST IN CASE) SERIES // 3" Chamber											
TYPE	ITEM #	GAUGE	2.75" CAPACITY	BARREL	FEATURES	CHOKES/BORE	OVERALL LENGTH*	TUBE FINISH	GUNMETAL FINISH	STOCK	APPROX. WEIGHT
500 JIC FLEX // FLEX TLS Tool-Less Locking System Components, Neoprene Carrying Case											
500 JIC FLEX	57340	12	5+1	18.5"	Soft Case, FLEX TLS Components	Cylinder Bore	28.75**	—	Matte Blue	FLEX Pistol Grip (Black)	5.5 lbs*
500 JIC // Water-Resistant Storage Tube With Carrying Strap											
500 JIC Cruiser	51340	12	5+1	18.5"	Tube/Strap, Survival Kit-in-a-Can	Cylinder Bore	28.75**	OD Green	Matte Blue	Pistol Grip (Black)	5.5 lbs*
500 JIC Mariner	52340	12	5+1	18.5"	Tube/Strap, Multi-Tool & Knife	Cylinder Bore	28.75**	Intl. Orange	Marinecote	Pistol Grip (Black)	5.5 lbs*

Overall Lengths & Weights*: For firearms only, excludes tube, case and/or accessories. All models include a free gun lock.

500/590A1 AOWS // 3" Chamber											
TYPE	ITEM #	GAUGE	2.75" CAPACITY	BARREL	SIGHTS	CHOKES	OVERALL LENGTH	METAL FINISH	STOCK/FOREND & FINISH	APPROX. WEIGHT	
590A1 COMPACT CRUISER – 4-SHOT // Subcompact Pump-Action, 10.25" Heavy-Walled Barrel, Metal Trigger Guard and Safety Button, Parkerized Finish, Vertical Grip/Strap, Clean-out Magazine Tube											
AOW 4-Shot	51664	12	3+1	10.25" Hvy-Walled	Bead	Cylinder Bore	19.5"	Parkerized	ATI T3 Pistol Grip, Folding Vertical Grip/Strap (Black)	5.3 Lbs	
500 COMPACT CRUISER – 3-SHOT // Subcompact Pump-Action, 7.5" Barrel, Parkerized Finish, Vertical Grip/Strap											
AOW 3-Shot	51697	12	2+1	7.5" Hvy-Walled	Bead	Cylinder Bore	17"	Parkerized	ATI T3 Pistol Grip, Folding Vertical Grip/Strap (Black)	4.9 Lbs	

AOW: Defined as an "AOW" (Any Other Weapon) and regulated under the National Firearms Act (NFA), both models require a \$5 tax stamp for transfers. ATI is a registered trademark of Advanced Technology International. All models include a free gun lock. Not all products are available in all states and jurisdictions. Check your state and local regulations.



SHOTGUNS

MOSSBERG

SECURITY / COMPETITION





500 Persuader Tri-Rail Adjustable
12 GA // 8-Shot // #50589



NEW 500 Persuader Retrograde
12 GA // 6-Shot // #50429



500 Persuader
12 GA // 8-Shot // #50567



500 Persuader
.410 Bore // 6-Shot // #50454



500 SPX
12 GA // 6-Shot // #51523

FEATURES:

- 6-Shot and 8-Shot
- 12 Gauge, 20 Gauge, and .410 Bore
- Drilled and tapped (excluding .410 Bore)
- Standard features include dual extractors, steel-to-steel lockup, top-mounted ambidextrous safety, twin action bars, and anti-jam elevator
- Select models include accessory pistol grip kit
- Select models offer Tri-Rail forend, ATI[®] tactical components, heat shields, ghost ring sights, and accessory pistol grip kits

The original pump-action shotgun that passed U.S. Military MIL-SPEC testing requirements almost 40 years ago is still built to handle the daily rigors of military and law enforcement use as well as home security. Every model is purpose-built, with various stock, sight, and barrel options. Simply put: mission possible.



500 ATI Tactical - Destroyer Gray
12 GA // 6-Shot // #50431



500 ATI TACTICAL MODELS:

Mossberg has teamed with ATI to outfit these models with an exceptional set of coordinated components: Stock/Grip, Heat Shield, Forend, Rails, Side Saddle, and Shell Holders.



Dealers can only order 500 ATI tactical models through a Talo Group distributor. Visit www.taloinc.com for more information.

500 SECURITY // 3" Chamber

TYPE	ITEM #	GAUGE/BORE	2.75" CAP.	BARREL	SIGHTS	CHOKES	OVERALL LENGTH	LOP	METAL FINISH	STOCK & FINISH	APPROX. WEIGHT
500 ATI TACTICAL** - 6-SHOT											
6-Shot - Adjustable	50431	12	5+1	18.5" + ATI Heat Shield	Winged Post & Bead	Cylinder Bore	36.37**	10.75-14.62"	Matte Blue (Destroyer Gray & Black)	ATI 6-Pos. Adj. Synthetic	6.75 lbs
6-Shot - Adjustable	50424	12	5+1	18.5" + ATI Heat Shield	Winged Post & Bead	Cylinder Bore	36.37**	10.75-14.62"	Matte Blue (Flat Dark Earth & Black)	ATI 6-Pos. Adj. Synthetic	6.75 lbs
500 PERSUADER RETROGRADE - 6-SHOT											
NEW 6-Shot	50429	12	5+1	18.5"	Bead	Cylinder Bore	39.5"	13.87"	Blue	Walnut	6.75 lbs
500 PERSUADER - 6-SHOT											
6-Shot (Stock & Pistol Grip)	50411	12	5+1	18.5"	Bead	Cylinder Bore	39.5" 31"	13.87"	Blue	Synthetic (Black) Synthetic Pistol Grip (Black)	6.75 lbs 5.75 lbs
6-Shot - Adjustable	50420	12	5+1	18.5"	Bead	Cylinder Bore	36.37**	10.75-14.62"	Matte Blue	6-Pos. Adj. Synthetic (Black)	6.75 lbs
6-Shot (Stock & Pistol Grip)	50452	20	5+1	18.5"	Bead	Cylinder Bore	38.5" 31"	13"	Blue	Synthetic (Black) Synthetic Pistol Grip (Black)	6.5 lbs 5.5 lbs
6-Shot	50454	.410	5+1	18.5"	Bead	Cylinder Bore	37"	12.5"	Matte Blue	Synthetic (Black)	5.75 lbs
500 HS410 HOME SECURITY - 6-SHOT											
6-Shot	50359	.410	5+1	18.5"	Bead	Spreader	37.25"	13.87"	Blue	Synthetic (Black)	5.5 lbs
500 PERSUADER - 8-SHOT											
8-Shot	50567	12	7+1	20" + Heat Shield	Ghost Ring	Cylinder Bore	41"	14"	Matte Blue	Synthetic (Black)	7 lbs
8-Shot	50577	12	7+1	20"	Bead	Cylinder Bore	41"	14"	Blue	Synthetic (Black)	7 lbs
8-Shot - Adjustable	50589	12	7+1	20"	Ghost Ring	Cylinder Bore	38.25**	10.75-14.62"	Matte Blue	6-Pos. Adj. Synthetic (Black)	6.75 lbs
8-Shot (Stock & Pistol Grip)	50579	12	7+1	20"	Bead	Cylinder Bore	41" 30.25"	14"	Blue	Synthetic (Black) Synthetic Pistol Grip (Black)	7 lbs 6 lbs
8-Shot - Compact	54300	20	7+1	20"	Ghost Ring	Cylinder Bore	39"	13"	Matte Blue	Synthetic - Compact (Black)	6 lbs
8-Shot - Adjustable	54301	20	7+1	20"	Ghost Ring	Cylinder Bore	37.75"	10.75-14.62"	Matte Blue	6-Pos. Adj. Synthetic (Black)	6.75 lbs
500 SPX - 6-SHOT // 6-Position Adjustable Stock, Picatinny Top Rail, Ghost Ring Rear/Winged Fiber-Optic Front Sight											
6-Shot Adjustable	51523	12	5+1	18.5"	Ghost Ring	Cylinder Bore	36.37**	10.75-14.62"	Matte Blue	6-Pos. Adj. Synthetic (Black)	6.75 lbs

*Overall Length: Measured when adjustable stock is at its minimum length of pull. LOP: Length of pull. ATI Heat Shield: Halo heat shield has dovetail mount twin front 2" rails, and front winged post sight. Side Saddle: Halo side saddle comes with 9 removable/repositionable polymer add-a-shell units and removable top rail. ATI 6-Position Adj.: TactiLite T3 6-position adjustable stock with X2 recoil-reducing rubber rear pad and grip pad, adjustable cheek riser (1" vertically). Stock's length of pull is adjusted using the integrated lever. ATI, TactiLite, Halo, Akita, and Add-A-Shell are registered trademarks of Advanced Technology International. 6-Pos. Adj: 6-position adjustable stock. Length of pull is adjusted using the integrated lever. All models include a free gun lock.

****DEALERS CAN ONLY ORDER 500 ATI TACTICAL MODELS (#50424 AND #50431) THROUGH A TALO GROUP DISTRIBUTOR. VISIT WWW.TALOINC.COM FOR MORE INFORMATION.**



NEW 590 Thunder Ranch
12 GA // 6-Shot // #52145



The mighty 590. With decades of military and law enforcement duty and stories under its belt, it's no surprise the 590 is also the ideal choice for home defense and was the pump-action shotgun that famed sharpshooter Clint Smith turned to for his new Thunder Ranch series.

FEATURES:

- 6-Shot, 7-Shot, or 9-Shot
- 12 Gauge
- Drilled and tapped receiver
- Clean-out magazine tube with removable cap for easy maintenance
- Standard features include dual extractors, steel-to-steel lockup, top-mounted ambidextrous safety, twin action bars, and anti-jam elevator
- Select models offer ghost ring sights, breacher barrels, Marinecote™ finish, heat shields, and accessory pistol grip kit



590 - Tri-Rail
12 GA // 9-Shot // #50670



590
12 GA // 7-Shot // #50778



590 - Heat Shield
12 GA // 9-Shot // #50645



590 FLEX™ Adjustable
12 GA // 9-Shot // #51672



590 - Mariner®
12 GA // 9-Shot with Pistol Grip Conversion Kit // #50299



Tactical Tri-Rail Forend models feature a full-length bottom rail and dual side rails for quick, easy attachment of railed accessories.



590 Mariner model has a corrosion-resistant Marinecote™ finish for extra protection in wet weather environments. For flexibility, the Mariner comes with both full-length stock and pistol grip conversion kit.



590 models have a convenient clean-out magazine tube with screw-off cap for easy maintenance.



590 TACTICAL // 3" Chamber

TYPE	ITEM #	GA.	2.75" CAPACITY	BARREL	SIGHTS	CHOKES	OVERALL LENGTH	LOP	METAL FINISH	STOCK & FINISH	APPROX. WEIGHT
590 THUNDER RANCH – 6-SHOT											
NEW 6-Shot	52145	12	5+1	18.5" Stand-Off	Red FO Bead	Cylinder Bore	35.5"	13"	Matte Blue	Synthetic (KUIU Camo) & Tri-Rail Forend	6.75 lbs
590 – 7-SHOT											
7-Shot	50778	12	6+1	18.5"	Bead	Cylinder Bore	39.5"	13.87"	Matte Blue	Synthetic (Black)	6.75 lbs
590 – 9-SHOT											
9-Shot	50645	12	8+1	20"+Heat Shield	Bead	Cylinder Bore	41"	13.87"	Matte	Synthetic (Black)	7.25 lbs
9-Shot – Tri-Rail	50670	12	8+1	20"	Ghost Ring	Accu-Choke Cyl. Tube	41"	13.87"	Matte Blue	Synthetic (Black) & Tri-Rail Forend	7 lbs
590 FLEX TACTICAL – 9-SHOT											
9-Shot – FLEX	51672	12	8+1	20"	Bead	Cylinder Bore	38.12**	11-14.25"	Matte Blue	6-Pos. Adj. Synthetic/Tactical (Black)	7 lbs
590 MARINER® – 9-SHOT // Full-Length Stock & Pistol Grip Conversion Kit, Marinecote All-Weather Finish											
9-Shot – Mariner (Stock & Pistol Grip)	50299	12	8+1	20"	Bead	Cylinder Bore	41" 30.25"	13.87" —	Marinecote Synthetic Pistol Grip (Black)	Synthetic (Black) 6 lbs	7 lbs

*Overall Length: Measured when stock is at its minimum length of pull. LOP: Length of pull. Tri-Rail: Forend has fully integrated bottom Picatinny rail and two mini side rails. Tri-Rail Forend: Forend has full-length bottom rail/two short side rails, ambidextrous touchpad accommodation. All models include a free gun lock.



590M - Heat Shield
12 GA // 10-Round Detachable Magazine // #50206



590M
12 GA // 10-Round Detachable Magazine // #50205



Accessory Magazines



All-steel magazine release button and housing are optimally positioned in front of the trigger guard for quick, ambidextrous access for reloading — and will not interfere with cycling the action.



590M shotguns and magazines are uniquely designed, incorporating stabilizing ribs that engage the magazine directly to the receiver for a sure lockup.



Hardened steel feed lips and over-molded steel shell ramps ensure efficient feeding. Anti-cant rounded follower improves feeding; round limiter improves spring life.



Removable floor plate for easy cleaning; ASTM-A-228 music wire springs improve feeding, increase durability, and prolong service life.



When it comes to detachable magazine pump-action shotguns, the reviews are in and the Mossberg 590M has better balance, better construction, and a better magazine than the competition. The first production double-stack detachable pump-action magazine offers a shorter length vs. its capacity than the competitor's single-stack design. The 590M features positive steel-to-steel lockup, twin action bars, drilled and tapped receivers, and an ambidextrous top-mounted safety.

FEATURES:

- 12 Gauge with 10-round detachable magazine
- Accessory magazines available in 5, 10, 15 and 20-round capacities
- Steel ambidextrous magazine release button and housing
- Stabilizing ribs on the magazine engage the receiver for secure lockup with mounted magazine
- Drilled and tapped receiver
- Standard features include dual extractors, steel-to-steel lockup, top-mounted ambidextrous safety, and twin action bars

590M MAG-FED // 2.75" Chamber											
TYPE	ITEM #	GA.	2.75" CAPACITY	BARREL	SIGHTS	CHOKES	OVERALL LENGTH	LOP	METAL FINISH	STOCK/FINISH	APPROX. WEIGHT
590M	50205	12	10+1	18.5" Hvy-Walled	Bead	Cylinder Bore	39.5"	13.87"	Matte Blue/Logo Embellished Receiver	Synthetic (Black)	7.75 lbs
590M - Heat Shield	50206	12	10+1	18.5" Hvy-Walled+Shield	Ghost Ring	Cyl Bore Accu-Choke	39.5"	13.87"	Matte Blue/Logo Embellished Receiver	Synthetic (Black)	7.75 lbs

Chamber: 590M shotguns require the use of 2.75" shotshells. **Shield:** Heat shield. **LOP:** Length of pull. **Weight:** Calculated with empty mounted 10-round magazine. All models include a free gun lock. Not all products are available in all states and jurisdictions. Check your state and local regulations.

590M Shockwave also available, see page 21.

590M MAG-FED ACCESSORY MAGAZINES								
TYPE	ITEM #	GA.	2.75" CAPACITY	TYPE	DIMENSIONS	MATERIAL/CONSTRUCTION	FEED LIPS	APPROX. WEIGHT
5-Round Magazine	95137	12	5	Double-Stack	2.5"L x 3.5"W x 5.375"H	High-Impact Polymer Tower, with Proprietary Self-Lubricating Polymer Body	Hardened Steel	0.96 lbs
10-Round Magazine	95138	12	10	Double-Stack	2.5"L x 3.5"W x 8.0"H	High-Impact Polymer Tower, with Proprietary Self-Lubricating Polymer Body	Hardened Steel	1.26 lbs
15-Round Magazine	95139	12	15	Double-Stack	2.5"L x 3.5"W x 10.375"H	High-Impact Polymer Tower, with Proprietary Self-Lubricating Polymer Body	Hardened Steel	1.46 lbs
20-Round Magazine	95140	12	20	Double-Stack	2.5"L x 3.5"W x 12.625"H	High-Impact Polymer Tower, with Proprietary Self-Lubricating Polymer Body	Hardened Steel	1.70 lbs

Magazines: Work exclusively with Mossberg 590M Shotguns, using 2.75" shotshells. **Weights:** Calculated without shotshells. **Patented:** Design components including double-stack design are covered by patents owned by Adaptive Tactical LLC. **Self-lubricating:** Dupont proprietary self-lubricating polymer body improves feeding and reduces internal friction. Not all products are available in all states and jurisdictions. Check your state and local regulations.



NEW 590A1 Retrograde
12 GA // 9-Shot // #51665

The Mossberg 590A1 is more than just a shotgun. This is the only combat duty pump shotgun that meets US Military testing requirements (MIL-SPEC). The 590A1 has seen duty in all branches of our country's military as well as in military and law enforcement agencies in over 70 countries worldwide. Protect yourself and your home with the shotguns that frontline personnel trust with their lives every day.

FEATURES:

- 7-Shot and 9-Shot
- 12 Gauge
- MIL-SPEC construction (MIL-S-3443E)
- Heavy-walled barrel
- Metal trigger guard and safety button
- Clean-out magazine tube
- Drilled and tapped receiver
- Various sight, stock, and forend configurations
- Parkerized or Marinecote™ finishes
- Standard features include dual extractors, steel-to-steel lockup, top-mounted ambidextrous safety, twin action bars, and anti-jam elevator



590A1 Magpul®
12 GA // 9-Shot // #51773



590A1
12 GA // 9-Shot // #51771



590A1 Mariner®
12 GA // 7-Shot // #50777



590A1
12 GA // 7-Shot // #50776

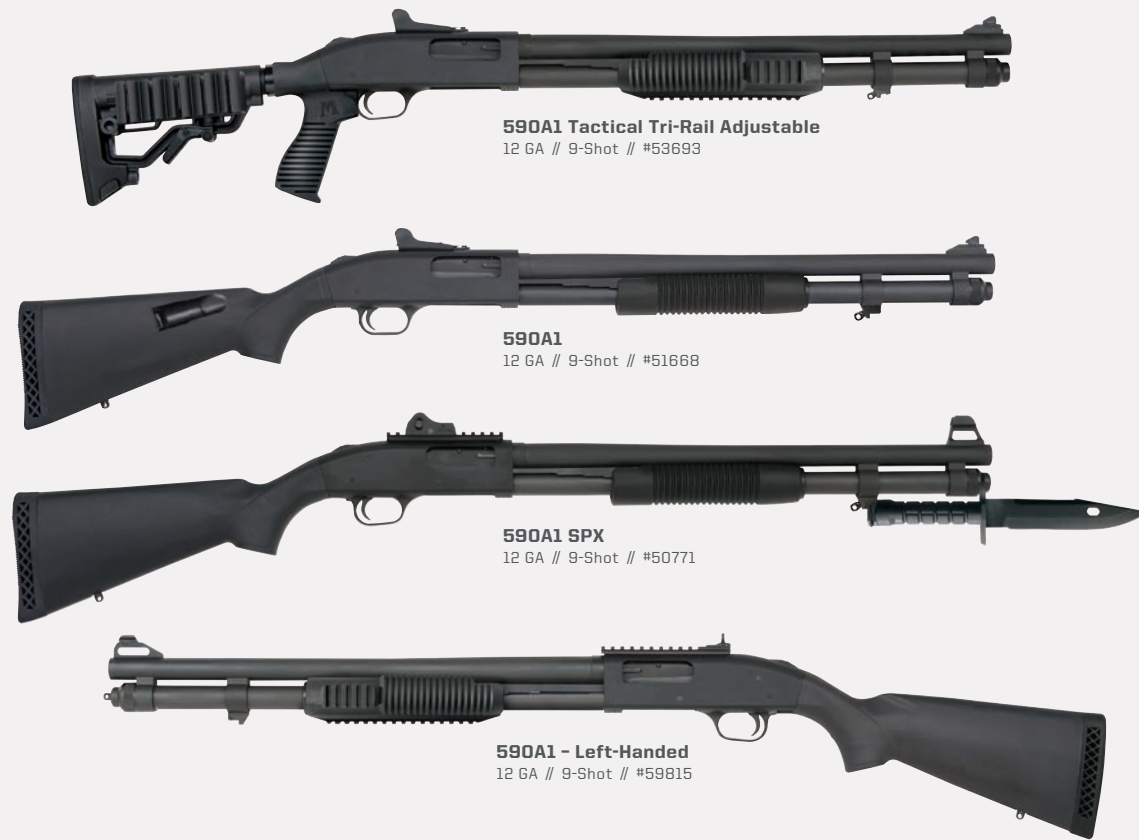


590A1 - Ghost Ring Sights
12 GA // 7-Shot // #50774



590A1™ MIL-SPEC Pump-Action Shotguns

590A1™ NFA/CLASS 3 Pump-Action Shotgun



590A1 Tactical Tri-Rail Adjustable
12 GA // 9-Shot // #53693

590A1
12 GA // 9-Shot // #51668

590A1 SPX
12 GA // 9-Shot // #50771

590A1 - Left-Handed
12 GA // 9-Shot // #59B15



590A1 NFA/Class 3
12 GA // 6-Shot // #51689



At Mossberg, we believe that protecting your family and home is a job that should never be taken lightly, and that's why we're proud to offer this 590A1 14" shotgun. Defined as an NFA/Class 3 Short Barreled Shotgun, it has standard 590A1 MIL-SPEC construction, and also features a strapped forend to assist in control and hand placement when cycling the action.

FEATURES:

- 6-Shot
- 12 Gauge
- Ghost ring sight
- MIL-SPEC 590A1 construction includes heavy-walled barrel, metal trigger guard and safety button, Parkerized finish, and clean-out tube.
- +4 shell storage stock
- Defined as NFA/Class 3, this shotgun requires a \$200 tax stamp for transfers



The Mossberg signature top-mounted safety is conveniently located and highly visible for ease of use for right- or left-handed shooters.



The strapped forend found on all models helps keep the lead hand clear of the muzzle when cycling the action.

590A1 MIL-SPEC // 3" Chamber											
TYPE	ITEM #	GA.	2.75" CAP.	BARREL	SIGHTS	CHOKES	OVERALL LENGTH	LOP	METAL FINISH	STOCK & FINISH	APPROX. WEIGHT
590A1 RETROGRADE – 9-SHOT // Heat Shield											
9-Shot	51665	12	8+1	20" Hvy Wall	Ghost Ring	Cylinder Bore	41"	13.87"	Parkerized	Walnut	7.25 lbs
590A1 – 7-SHOT											
7-Shot	50774	12	6+1	18.5" Hvy Wall	Ghost Ring	Cylinder Tube	39.5"	13.87"	Parkerized	Synthetic w/Tri-Rail Forend (Black)	7 lbs
7-Shot	50776	12	6+1	18.5" Hvy Wall	Bead	Cylinder Bore	39.5"	13.87"	Parkerized	Synthetic w/Tri-Rail Forend (Black)	7 lbs
7-Shot Mariner®	50777	12	6+1	18.5" Hvy Wall	Bead	Cylinder Bore	39.5"	13.87"	Marinecote	Synthetic w/Tri-Rail Forend (Black)	7 lbs
590A1 MAGPUL – 9-SHOT // Magpul SGA Adj. LOP Stock with Interchangeable Cheek Riser Combs, MOE Forend, Sling Plates											
9-Shot	51773	12	8+1	20" Hvy Wall	XS Ghost Ring	Cylinder Bore	39.5"	12.25-14.25"	Parkerized	SGA Adj./Spacers – Synthetic (Black)	7.25 lbs**
590A1 TACTICAL TRI-RAIL ADJUSTABLE – 9-SHOT											
9-Shot	53693	12	8+1	20" Hvy Wall	Ghost Ring/FO Front	Cylinder Bore	36.12"	10.5-14.25"	Parkerized	6-Pos. Adj. w/Tri-Rail Forend (Black)	7.75 lbs
590A1 SPX – 9-SHOT // M9 Bayonet & Scabbard, Picatinny Top Rail, Ghost Ring Rear Sight, Winged Fiber-Optic Front Sight											
9-Shot	50771	12	8+1	20" Hvy Wall	Ghost Ring/FO Front	Cylinder Bore	41"	13.87"	Parkerized	Synthetic (Black)	7 lbs
590A1 – 9-SHOT											
9-Shot	51771	12	8+1	20" Hvy Wall	XS Ghost Ring	Cylinder Bore	41"	13.87"	Parkerized	Syn. +4 Shell Holder w/Tri-Rail Forend (Black)	7 lbs
9-Shot – Left-Handed	59815	12	8+1	20" Hvy Wall	XS Ghost Ring	Cylinder Bore	41"	13.87"	Parkerized	Synthetic w/Tri-Rail Forend (Black)	7 lbs
9-Shot	51660	12	8+1	20" Hvy Wall	Bead	Cylinder Bore	41"	13.87"	Parkerized	Synthetic (Black)	7 lbs
9-Shot	51663	12	8+1	20" Hvy Wall	Ghost Ring/FO Front	Cylinder Bore	41"	13.87"	Parkerized	Synthetic (Black)	7 lbs
9-Shot	51668	12	8+1	20" Hvy Wall	Ghost Ring/FO Front	Cylinder Bore	41"	13.87"	Parkerized	Synthetic +4 Shell Holder (Black)	7 lbs

*Overall Length: Measured when adjustable stock is at its minimum length of pull. LOP: Length of pull. 6-Pos. Adj: 6-position adjustable stock. Length of pull is adjusted using the integrated lever. XS Ghost Ring: Picatinny rail mounted rear ghost ring, and AR-style white stripe front sight. Tri-rail: forend has fully integrated bottom Picatinny rail, two mini side rails. +4 Shell Holder: Stock holds 4 extra rounds. **Weight: Measured without spacers, when adjustable stock is at its minimum length of pull. Magpul: Magpul, SGA, and MOE are registered trademarks of Magpul Industries. SGA Adj/Spacers: Magpul SGA stock's length of pull is adjusted in .5" increments using four stock spacer inserts. Cheek Riser: SGA stock comes with two interchangeable cheek riser combs: flush and .25" rise. Sling plates: Magpul receiver and barrel-mounted sling plates provided. All models include a free gun lock.

590A1 NFA/CLASS 3 // 3" Chamber											
TYPE	ITEM #	GA.	2.75" CAP.	BARREL	SIGHTS	CHOKES	OVERALL LENGTH	LOP	METAL FINISH	STOCK & FINISH	APPROX. WEIGHT
6-Shot	51689	12	5+1	14" Hvy Wall	Ghost Ring	Cylinder Bore	33.75"	13.87"	Parkerized	Synthetic +4 Shell Storage (Black)	6.75 lbs

NFA/Class 3: Subject to, and regulated under, the National Firearms Act (NFA), all models require a \$200 tax stamp for transfers. LOP: Length of pull. +4 Shell Holder: Stock holds 4 extra-rounds. All models include a free gun lock. Not all products are available in all states and jurisdictions. Check your state and local regulations.



930 SPX - Pistol Grip
12 GA // 8-Shot // #85223

Shoot with more speed, accuracy, and confidence: shoot with a Mossberg 930 Tactical autoloading shotgun. This tough yet smooth-cycling 930 is the perfect choice for defending your domain from the unexpected.

FEATURES:

- 5-Shot and 8-Shot
- 12 Gauge
- Dual gas-vent system
- Quick-empty magazine-release button for easy unloading
- Drilled and tapped receiver
- Top-mounted safety
- Select models feature LPA ghost ring sights, top Picatinny rail, and full-length pistol grip stock



The knurled, extended charging handle provides a sure grip when retracting the bolt — even with gloves. A quick-empty magazine release button on the receiver makes unloading a snap.



An extended magazine tube gives 8-Shot 930 Tactical models an additional three rounds while retaining a compact 18.5" barrel.



930 SPX
12 GA // 8-Shot // #85360



NEW 930 Thunder Ranch
12 GA // 5-Shot // #85331



930
12 GA // 8-Shot // #85322



930 Field/Security Combo
12 GA // 5-Shot // #85325

930 TACTICAL // 3" Chamber

TYPE	ITEM #	GA.	2.75" CAP.	BARREL	SIGHTS	CHOKES	OVERALL LENGTH	LOP	METAL FINISH	STOCK & FINISH	APPROX. WEIGHT
930 SPX PISTOL GRIP – 8-SHOT // Full Length Stock w/Pistol Grip, Picatinny Rail											
8-Shot – P. Grip	85223	12	7+1	18.5"	Ghost Ring/FO	Cylinder Bore	39"	13"	Coyote Tan	Full-Length Syn./Pistol Grip (Black)	7.25 lbs
8-Shot – P. Grip	85370	12	7+1	18.5"	Ghost Ring/FO	Cylinder Bore	39"	13"	Matte Blue	Full-Length Syn./Pistol Grip (Black)	7.25 lbs

930 SPX – 8-SHOT // Picatinny Rail											
8-Shot	85360	12	7+1	18.5"	Ghost Ring/FO	Cylinder Bore	39"	14"	Matte Blue	Synthetic (Black)	6.75 lbs

930 THUNDER RANCH – 5-SHOT											
NEW 5-Shot	85331	12	4+1	18.5" Standoff	Red FO Bead	Cylinder Bore	39"	14"	Matte Blue	Synthetic (KUIJU Camo)	6.75 lbs

930 – 8-SHOT											
8-Shot	85322	12	7+1	18.5"	Bead	Cylinder Bore	39"	14"	Matte Blue	Synthetic (Black)	6.75 lbs

930 TACTICAL COMBO // 3" Chamber, Multidiscipline Two-Barrel Set

TYPE	ITEM #	GA.	2.75" CAP.	BARREL	SIGHTS	CHOKES	OVERALL LENGTH	LOP	METAL FINISH	STOCK & FINISH	APPROX. WEIGHT
Field/Security Combo	85325	12	4+1	28" VR	Bead	Accu-Set	48.5"	14"	Blue	Synthetic (Black)	7.5 lbs
			4+1	18.5"	Bead	Cylinder Bore	39"	14"	Blue	Synthetic (Black)	6.75 lbs

All 930 models come factory assembled. LOP: Length of pull. Accu-Set: Includes Full, Modified, and Improved Cylinder chokes. Ghost Ring/FO: LPA ghost ring rear sight, winged fiber-optic front sight. All models include a free gun lock.

930™ JM PRO-SERIES Autoloading Competition Shotguns

MOSSBERG



930 JM Pro-Series
12 GA // 10-Shot // #85118



930 JM Pro-Series - Kryptek Typhon
12 GA // 10-Shot // #85133



930 JM Pro-Series
12 GA // 9-Shot // #85119

Shred the competition with our 930 JM Pro-Series. Designed to compete at the highest level, this autoloading shotgun is the firearm that world champion and multiple title holder Jerry Miculek and his team reach for when speed and accuracy matter most. Every model is competition-ready.

FEATURES:

- 9-Shot and 10-Shot
- 12 Gauge
- Fast-cycling gas system
- Beveled loading gate for faster reloading
- JM Pro-Series receiver engraving
- Special corrosion-resistant finishes on internal parts provide extra-smooth cycling and easy cleaning
- Adjustable overtravel
- Knurled, extended charging handle
- Quick empty magazine release button



TEAM MICULEK is (left to right) Lena, Jerry, and Kay Miculek. Each is an accomplished world champion and multiple title holder, and competes regularly with the 930 JM Pro shotgun.



When every second counts, the JM Pro shotgun's beveled loading gate allows competition-type reloading at legendary Miculek-level speeds.

930 JM PRO-SERIES // 3" Chamber

TYPE	ITEM #	GA.	2.75" CAP.	BARREL	SIGHTS	CHOKES	OVERALL LENGTH	LOP	METAL FINISH	STOCK & FINISH	APPROX. WEIGHT
10-Shot Pro-Series	85118	12	9+1	24" VR + BBL Clamp	FO Front	Accu-Set	44.5"	14"	Matte Blue	Synthetic (Black)	7.75 lbs
10-Shot Pro-Series	85133	12	9+1	24" VR + BBL Clamp	FO Front	Accu-Set	44.5"	14"	Matte Blue	Synthetic (Kryptek Typhon)	7.75 lbs
9-Shot Pro-Series	85119	12	8+1	22" VR + BBL Clamp	FO Front	Accu-Set	42.5"	14"	Matte Blue	Synthetic (Black)	7.5 lbs
5-Shot Pro-Series	85116	12	4+1	24" VR	FO Front	Accu-Set	44.5"	14"	Matte Blue	Synthetic (Black)	7.75 lbs

All 930 models come fully factory assembled. **Premium Coatings/Finishing:** Includes boron-nitride-coated gas piston, piston rings, magazine tube, hammer, sear, shell stop, bolt slide and elevator receive additional finishing to reduce friction. **VR:** Vent rib. **LOP:** Length of pull. **Accu-Set:** Includes Full, Modified and Improved Cylinder choke tubes. **BBL Clamp:** Removable barrel stabilizing clamp. **FO Front:** Fiber-optic front bead sight. **Typhon:** Kryptek and Typhon are registered trademarks of Kryptek Outdoor Group, Inc. All models include a free gun lock. Canada only.



Maverick 88 - Security
12 GA // 8-Shot // #31048



Maverick 88 - Security
12 GA // 6-Shot // #31022



Maverick 88 - Security
12 GA // 6-Shot // #31027



ATI Top-Folding Stock folds/unfolds using a quick release button, and securely locks into either position. Folds compactly for ease of use in tight quarters or convenient transport. Shotgun fires in either the folded or unfolded position.



Maverick 88 - Slug
12 GA // Slug // #31044



Maverick 88
12 GA // All-Purpose // #31010

FEATURES:

- 6-Shot and 8-Shot
- 12 Gauge and 20 Gauge
- Twin action bars
- Dual extractors
- Cross-bolt safety
- Anti-jam elevator
- Steel-to-steel lockup
- Compatible with Mossberg 500 accessory barrels

The Maverick is the utility player when it comes to pump-action shotguns. Affordable and reliable, Maverick is equally at home combing through the woods, traversing upland fields, or protecting your home. It's the working man's shotgun that's not afraid to get to work.



Maverick 88 - Youth
20 GA // #32202



Maverick 88 - Security/Field Combo
12 GA // #31014



Maverick 88 pump-action models are fully interchangeable with Mossberg 500 barrels (within gauge and capacity). The diverse selection of available accessory barrels allows shooters to adapt the Maverick for multiple purposes, including hunting and security use.

MAVERICK 88 // 3" Chamber

TYPE	ITEM #	GA.	2.75" CAP.	BARREL	SIGHTS	CHOKES	OVERALL LENGTH	LOP	METAL FINISH	STOCK & FINISH	APPROX. WEIGHT
MAVERICK 88 - SECURITY											
6-Shot	31022	12	5+1	18.5"	Bead	Cylinder Bore	39.5"	14.5"	Blue	Synthetic (Flat Dark Earth)	6.25 lbs
6-Shot	31023	12	5+1	18.5"	Bead	Cylinder Bore	39.5"	14.5"	Blue	Synthetic (Black)	6.25 lbs
8-Shot	31048	12	7+1	20"	Bead	Cylinder Bore	41"	14.5"	Blue	Synthetic (Flat Dark Earth)	6.5 lbs
8-Shot	31046	12	7+1	20"	Bead	Cylinder Bore	41"	14.5"	Blue	Synthetic (Black)	6.5 lbs
MAVERICK 88 W/TOP-FOLDING STOCK - SECURITY											
6-Shot - Folding Stock	31027	12	5+1	18.5"	Bead	Cylinder Bore	39.5"	14.5"	Blue	ATI Shotforce Top-Folding Stock (Black)	6 lbs
MAVERICK 88 - ALL-PURPOSE											
All-Purpose	32200	20	5+1	26" VR	Bead	Modified Tube	45.25"	14"	Blue	Synthetic (Black)	7 lbs
All-Purpose - Youth	32202	20	5+1	22" VR	Bead	Modified Tube	39.75"	13"	Blue	Synthetic (Black)	5.25 lbs
All-Purpose	31010	12	5+1	28" VR	Bead	Modified Tube	47.75"	14.5"	Blue	Synthetic (Black)	7 lbs
MAVERICK 88 - SLUG											
Slug	31017	12	5+1	24"	Adj. Rifle	Cylinder Bore	43.5"	14.5"	Blue	Synthetic (Black)	6.75 lbs
Slug	31044	12	5+1	24"	Adj. Rifle	Fully Rifled Bore	43.5"	14.5"	Blue	Synthetic (Black)	6.75 lbs

MAVERICK 88 SECURITY/FIELD COMBO

TYPE	ITEM #	GA.	2.75" CAP.	BARREL	SIGHTS	CHOKES	OVERALL LENGTH	LOP	METAL FINISH	STOCK & FINISH	APPROX. WEIGHT
6-Shot	31014	12	5+1	18.5"	Bead	Cylinder Bore	39.5"	14.5"	Blue	Synthetic (Black)	6.25 lbs
		12	5+1	28" VR	Bead	Modified Tube	47.75"	14.5"	Blue	Synthetic (Black)	7 lbs

VR: Vent rib. LOP: Length of pull. ATI and Shotforce are registered trademarks of Advanced Technology International. All models include a tree gun lock.



SHOTGUNS

MOSSBERG

FIELD / SPORTING





500 Classic
12 GA // #50126

When it comes to pump-action shotguns, Mossberg sets the standard. Case in point, our 500 pump-action shotgun. Its short cycling time lets you identify and point to a new target quickly and efficiently. And its overall simplicity means higher durability at a lower cost. Without question, it's the most versatile shotgun platform available on the market. It's no wonder that over 12 million have been sold.

FEATURES:

- 6-Shot
- 12 Gauge, 20 Gauge, and .410 Bore
- All-Purpose Field, Turkey, Waterfowl, and Slug options
- Standard features include dual extractors, steel-to-steel lockup, top-mounted ambidextrous safety, twin action bars, and anti-jam elevator
- Interchangeable chokes (except the .410 Bore)
- 2-barrel combo models for multiple season use
- Wide range of accessory barrels to expand your shooting seasons



500 sight offerings include:
[TOP ROW] Adjustable Front/Rear Fiber-Optic (Turkey);
[BOTTOM ROW] Bead (Field), Fiber-Optic Front (.410 Turkey), and Adjustable Rifle (Slug).



500 All-Purpose
20 GA // #50136



500 All-Purpose
12 GA // #56420



500 All-Purpose
.410 Bore // #50104



500 Tactical Turkey
12 GA // #53265



NEW 500 Turkey - Bottomland
.410 Bore // #50109



500 FLEX All-Purpose
12 GA // #50121

500 FIELD // 3" Chamber

TYPE	ITEM #	GAUGE/BORE	2.75" CAP.	BARREL	SIGHTS	CHOKES	OVERALL LENGTH	LOP	FINISH	STOCK	APPROX. WEIGHT
500 CLASSIC – ALL PURPOSE FIELD // Finely Checkered, High-Gloss Walnut Stock and Forend, Classic Red Butt Pad with Pachmayr Spacer, Jeweled Bolt											
All Purpose	50126	12	5+1	28" VR	Twin Bead	Accu-Set	47.5"	13.87"	High-Polish Blue	High-Gloss Walnut	7.5 lbs
500 – ALL PURPOSE FIELD											
All Purpose	50120	12	5+1	28" VR	Twin Bead	Accu-Set	47.5"	13.87"	Blue	Wood	7.5 lbs
All Purpose	56420	12	5+1	28" VR	Twin Bead	Accu-Set	48.5"	13.87"	Matte Blue	Synthetic (Black)	7.5 lbs
All Purpose	50136	20	5+1	26" VR	Twin Bead	Accu-Set	45.5"	13.87"	Blue	Wood	7 lbs
All Purpose	56436	20	5+1	26" VR	Twin Bead	Accu-Set	45.25"	13.87"	Matte Blue	Synthetic (Black)	7 lbs
All Purpose	50104	.410	5+1	24" VR	Twin Bead	Fixed Full	43.75"	13.87"	Blue	Wood	6.25 lbs
500 – TURKEY											
NEW Turkey	50109	.410	5+1	26" VR	Front FO	Fixed Full	45.75"	13.87"	MO Bottomland	Synthetic	6.5 lbs
Turkey	52280	12	5+1	20" VR	Adj. FO	X-Factor Ptd Tube	40.25"	13.87"	MO Obsession	Synthetic	7 lbs
Turkey	54339	20	5+1	22" VR	Adj. FO	X-Factor Ptd Tube	39.25"	13.87"	MO Obsession	Synthetic	6.75 lbs
500 TACTICAL TURKEY[®] // 6-Position Adjustable LOP Stock, Sling											
Turkey	53265	12	5+1	20" VR	Adj. FO	X-Factor Ptd Tube	36.5"	10.75–14.62"	MO Obsession	Adj. Synthetic w/Sling	7.25 lbs
500 FLEX ALL-PURPOSE											
500 FLEX	50121	12	5+1	28" VR	Twin Bead	Accu-Set	48.25"	14.25"	Matte Blue	FLEX Std. Synthetic (Black)	7.5 lbs

*Overall Length: Measured at minimum length of pull. LOP: Length of pull. Accu-Set: Includes Full, Modified and Improved Cylinder choke tubes. VR: Vent rib. Adj. FO: Front and rear sights are adjustable for windage and elevation. ISB: Integral scope base (cantilevered). MO: Mossy Oak Brand Camo. Mossy Oak, Break-Up, Obsession, and Shadowgrass Blades are registered trademarks of Haas Outdoor, Inc. All models include a free gun lock.

500® FIELD COMBOS Pump-Action Shotguns

MOSSBERG



NEW 500 Field/Deer Combo
20 GA // #54047



500 Field/Security Combo
12 GA // #54169



500 Field/Deer Combo
12 GA // #54264



500 Field/Deer Combo
12 GA // #54243



500 Field/Deer Combo
12 GA // #52282



500 sight offerings include: **[TOP ROW]** Adjustable Front/Rear Fiber-Optic (Turkey); **[BOTTOM ROW]** Bead (Field), Fiber-Optic Front (Waterfowl), and Adjustable Rifle (Slug).



Mounting optics is a snap with the Integral Scope Base/Cantilever barrel on several 500 Slug models. Improves eye alignment and provides a quicker return to zero season after season. Two new models include 2.5x20 scope.



Several 500 Hunting models feature a Dual Comb® stock, supplied with high-profile (for sighting with mounted optics) or low-profile (for sighting down the barrel) interchangeable combs.

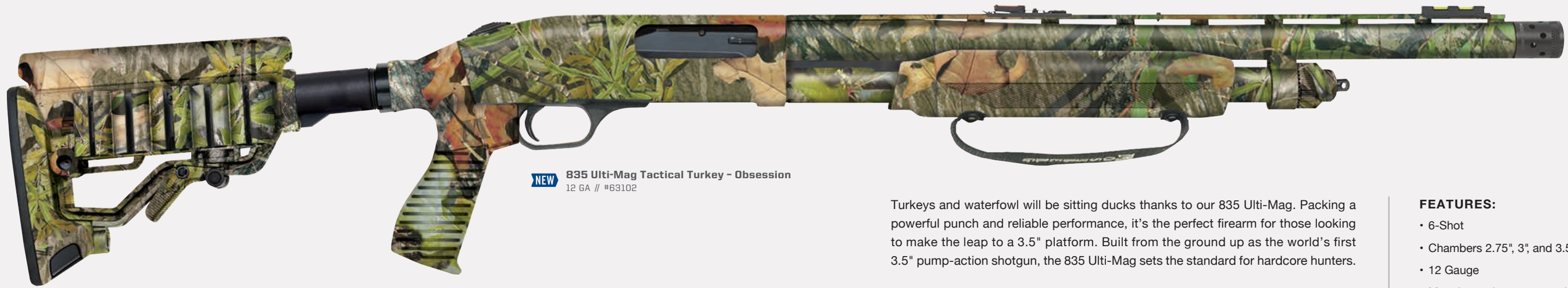
Durable and easy to maintain, these highly adaptable pump-action shotguns in two-barrel combo sets cover multiple seasons and disciplines.

FEATURES:

- Field models with accessory Slugster® or Security barrel
- 6-Shot
- 12 Gauge, 20 Gauge, and .410 Bore
- Standard features include dual extractors, steel-to-steel lockup, top-mounted ambidextrous safety, twin action bars, and anti-jam elevator
- Interchangeable chokes (except the .410 Bore)

500 FIELD COMBOS // 3" Chamber											
TYPE	ITEM #	GA.	2.75" CAP.	BARREL	SIGHTS	CHOKES	OVERALL LENGTH	LOP	FINISH	STOCK	APPROX. WEIGHT
500 COMBOS											
Turkey/Deer Combo	53270	12	5+1	24" VR	Adj. FO	XX-Full	43.5"	13.87"	MO Break-Up Country	Synthetic	7.5 lbs
		12	5+1	24" Fluted	Adj. Rifle	Fully Rifled Bore	43.5"	13.87"	MO Break-Up Country		7.5 lbs
Field/Deer Combo	54243	12	5+1	28" VR	Dual Bead	Accu-Set	47.5"	13.87"	Blue	Wood (Dual Comb)	7.5 lbs
		12	5+1	24"	ISB	Fully Rifled Bore	43.5"	13.87"	Blue		7.25 lbs
Field/Deer Combo	54264	12	5+1	28" VR	Dual Bead	Accu-Set	47.5"	13.87"	Blue	Wood	7.5 lbs
		12	5+1	24"	Adj. Rifle	Fully Rifled Bore	43.5"	13.87"	Blue		7.25 lbs
Field/Security Combo	54169	12	5+1	28" VR	Dual Bead	Accu-Set	47.5"	13.87"	Blue	Wood	7.5 lbs
		12	5+1	18.5"	Bead	Cylinder Bore	39.5"	—	Blue	Pistol Grip Kit	6.75 lbs
Field/Deer Combo	52282	12	5+1	28" VR	Dual Bead	Accu-Set	47.5"	13.87"	MO Break-Up Country	Synthetic	7.5 lbs
		12	5+1	24"	Adj. Rifle	Fully Rifled Bore	43.5"	13.87"	MO Break-Up Country		7.25 lbs
Field/Deer Combo	54282	20	5+1	26" VR	Dual Bead	Accu-Set	45.5"	13.87"	Blue	Wood	7 lbs
		20	5+1	24"	Adj. Rifle	Fully Rifled Bore	43.5"	13.87"	Blue		7 lbs
Field/Deer Combo	54183	20	5+1	26" VR	Dual Bead	Accu-Set	45.5"	13.87"	MO Break-Up Country	Synthetic	7 lbs
		20	5+1	24"	Adj. Rifle	Fully Rifled Bore	43.5"	13.87"	MO Break-Up Country		7 lbs
500 SCOPED COMBOS											
NEW Field/Deer Combo	54047	20	5+1	26" VR	Dual Bead	Accu-Set	47.5"	13.87"	Matte Blue	Synthetic (Dual Comb)	7 lbs
		20	5+1	24"	ISB w/2.5x20	Fully Rifled Bore	43.5"	13.87"	Matte Blue		7 lbs
NEW Field/Deer Combo	58244	12	5+1	28" VR	Dual Bead	Accu-Set	47.5"	13.87"	Matte Blue	Synthetic (Dual Comb)	7 lbs
		12	5+1	24"	ISB w/2.5x20	Fully Rifled Bore	43.5"	13.87"	Matte Blue		7 lbs

*Overall Length: Measured at minimum length of pull. LOP: Length of pull. Accu-set: Includes Full, Modified, and Improved Cylinder choke tubes. VR: Vent rib. Adj. FO: Front and rear sights are adjustable for windage and elevation. ISB: Integral scope base (cantilevered). MO: Mossy Oak Brand Camo. Mossy Oak, Break-Up, Obsession, and Shadowgrass Blades are registered trademarks of Haas Outdoor, Inc. All models include a free gun lock.



NEW 835 Ulti-Mag Tactical Turkey - Obsession
12 GA // #63102

Turkeys and waterfowl will be sitting ducks thanks to our 835 Ulti-Mag. Packing a powerful punch and reliable performance, it's the perfect firearm for those looking to make the leap to a 3.5" platform. Built from the ground up as the world's first 3.5" pump-action shotgun, the 835 Ulti-Mag sets the standard for hardcore hunters.

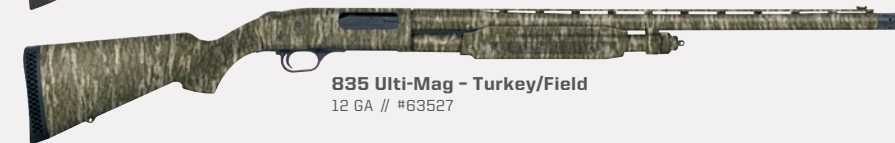


FEATURES:

- 6-Shot
- Chambers 2.75", 3", and 3.5" shotshells
- 12 Gauge
- Mossberg signature overbored barrels offer 10 Gauge dimensions for the entire length of the barrel, providing less pellet deformation, resulting in tighter, more uniform patterns
- Clean-out tubes
- Standard features include dual extractors, steel-to-steel lockup, top-mounted ambidextrous safety, twin action bars, and anti-jam elevator
- 2-barrel combo models for multiple season use
- Turkey models include a Marble Arms double ring "Bullseye" sight option
- Interchangeable chokes



835 Ulti-Mag - Turkey
12 GA // #62233



835 Ulti-Mag - Turkey/Field
12 GA // #63527



835 Ulti-Mag - All-Purpose
12 GA // #66723



835 Ulti-Mag - Waterfowl
12 GA // #63521



NEW 835 Ulti-Mag Field/Deer Combo
12 GA // Wood // #68224



835 Ulti-Mag - Turkey/Waterfowl Combo
12 GA // #62437



835 Ulti-Mag - Turkey/Deer Combo
12 GA // #62419

835 ULTI-MAG // 3.5" Chamber

TYPE	ITEM #	GA.	2.75" CAP.	BARREL	SIGHTS	CHOKES	OVERALL LENGTH	LOP	FINISH	STOCK	APPROX. WEIGHT
835 ULTI-MAG TACTICAL TURKEY[®]											
NEW Turkey	63102	12	5+1	20" VR OB	Adj. FO	X-Factor Ptd Tky Tube	40.75"	13.87"	MO Obsession	Adj Tactical	7 lbs
835 ULTI-MAG ALL-PURPOSE // Overbored Barrel											
Turkey	66723	12	5+1	26" VR OB	Bead	Accu-Mag Set	46.75"	13.87"	Matte Blue	Synthetic (Black)	7.5 lbs
835 ULTI-MAG TURKEY/FIELD // Overbored Barrel, Accu-Mag Choke Set and X-Factor Ported Ulti-Full Turkey Tube											
Turkey/Field	63527	12	5+1	26" VR OB	FO Front	Accu-Mag Set + X-Factor Ptd Tky Tube	46.75"	13.87"	MO Bottomland	Synthetic (Bottomland)	7.5 lbs
835 ULTI-MAG TURKEY // Marble Arms Bullseye Fiber-Optic Sights											
Turkey	62233	12	5+1	24" VR OB	Marble Bullseye FO	Ulti-Full Tube	44.75"	13.87"	MO Obsession	Synthetic (Obsession)	7.5 lbs
835 ULTI-MAG WATERFOWL // Overbored Barrel, Sling											
Waterfowl	63521	12	5+1	28" VR OB	FO Front	Accu-Mag Set	48.75"	13.87"	MO Shadowgrass Blades	Synthetic (Shad. Blades)	7.75 lbs

835 ULTI-MAG COMBOS // 3.5" Chamber

TYPE	ITEM #	GA.	2.75" CAP.	BARREL	SIGHTS	CHOKES	OVERALL LENGTH	LOP	FINISH	STOCK	APPROX. WEIGHT
Turkey/Deer	62419	12	5+1	24" VR OB	Adj. FO	Ulti-Full Tube	44.75"	13.87"	MO Break-Up Country	Synthetic (Dual Comb)	7.5 lbs
Combo	12	5+1	24"	24"	ISB	Fully Rifled Bore	44.75"	13.87"	MO Break-Up Country	Synthetic (Dual Comb)	7.5 lbs
Turkey/Waterfowl	62437	12	5+1	24" VR OB	Adj. FO	Ulti-Full Tube	44.75"	13.87"	MO Break-Up Country	Synthetic	7.5 lbs
Combo	12	5+1	28" VR OB	28" VR OB	FO Front	Accu-Mag Set	48.75"	13.87"	MO Break-Up Country	Synthetic	7.75 lbs
NEW Field/Deer	68224	12	5+1	28" VR OB	Bead	Accu-Mag Set	48.75"	13.87"	Blue	Wood	7.75 lbs
Combo	12	5+1	24"	24"	Adj. Rifle	Fully Rifled Bore	44.75"	13.87"	Blue	Wood	7.5 lbs

LOP: Length of pull. Accu-Mag Set: Includes Full, Modified and Improved Cylinder choke tubes. VR: Vent rib. Adj. FO: Front and rear fiber-optic sights adjust for windage and elevation. ISB: Integral scope base (cantilevered). MO: Mossy Oak brand camo. Mossy Oak, Bottomland, Obsession, Break-Up and Shadowgrass Blades are registered trademarks of Haas Outdoor, Inc. All models include a free gun lock.

YOUTH 500® BANTAM™/YOUTH 500® FLEX™ Pump-Action Shotguns

500® SUPER BANTAM™ Pump-Action Shotguns



500 Bantam
12 GA // #52132



500 Bantam
.410 Bore // #50112



500 Bantam Field/Deer Combo
20 GA // #54188



NEW **500 Bantam FLEX Field/Deer Combo**
20 GA // #54330



NEW **500 Bantam FLEX**
20 GA // #54334



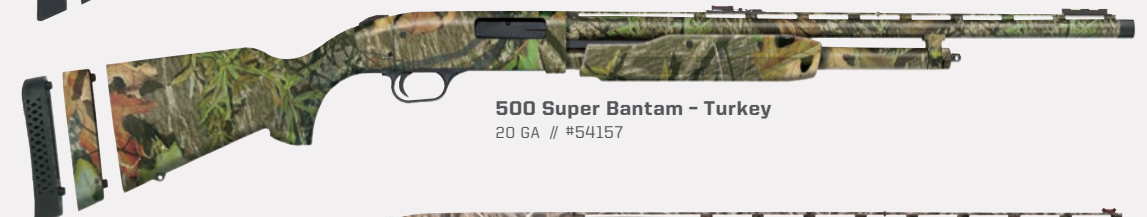
500 Super Bantam - Muddy Girl® Serenity™
20 GA // #54160



500 Super Bantam - Field/Deer Combo
20 GA // #54215



500 Super Bantam - All-Purpose
20 GA // #54210



500 Super Bantam - Turkey
20 GA // #54157



500 Super Bantam - Waterfowl
20 GA // #54218



500 Super Bantam - Left-Handed
20 GA // #59822

At Mossberg, we're dedicated to ensuring that youngsters who are ready for the responsibility of hunting are safely outfitted with a firearm that fits properly and comfortably. Our Youth 500 Bantam and 500 FLEX pump-action shotguns have ergonomics for smaller-stature users, with a smaller grip for easier trigger reach, EZ-Reach™ forends for shorter reach for cycling the action, and compact lengths of pull. They're a great introduction to the world of hunting and shooting.

FEATURES:

- 6-Shot
- 12 and 20 Gauge, and .410 Bore
- EZ-Reach™ forends for easy cycling, and smaller grip and shorter reach to trigger
- Shorter barrels provide a lightweight, balanced feel
- Multi-season 2-barrel combos
- Standard features include dual extractors, steel-to-steel lockup, top-mounted ambidextrous safety, twin action bars, and anti-jam elevator
- 13" length of pull (Bantam)
- FLEX Youth offers a 12.75" min. LOP (adj.)

In our fourth generation of family ownership, Mossberg knows a lot about passing on the great tradition of shooting sports. With a 1" stock spacer, our Super Bantams are designed to grow with the shooter, continually providing a proper length of pull through formative years. Like all of our youth pump-action shotguns, they have a smaller grip for easier trigger reach, our EZ-Reach™ forends for shorter reach while cycling the action, and shorter barrels for better balance.

FEATURES:

- 6-Shot
- 12 Gauge, 20 Gauge, .410 Bore
- EZ-Reach™ forends for easy cycling, and smaller grip and shorter reach to trigger
- Multi-season 2-barrel combos
- Standard features include dual extractors, steel-to-steel lockup, top-mounted ambidextrous safety, twin action bars, and anti-jam elevator
- 12"-13" variable length-of-pull stocks

505™ YOUTH / 510® MINI SUPER BANTAM™ Pump-Action Shotguns

YOUTH SHOTGUN Specifications



At Mossberg, we'd never tell you how to raise your kids, but we won't be shy in telling you how to outfit them with the perfect shotgun. A shotgun that's not only affordable and easy to operate, but one that's specifically engineered to fit youth hunters. Our 505 Youth and 510 Mini Super Bantam are the most compact of all of our youth shotguns, and are available in 20 Gauge and .410 Bore.

505 YOUTH FEATURES:

- 5-Shot
- 20 Gauge and .410 Bore
- EZ-Reach™ forends for easy cycling, and smaller grip and shorter reach to trigger
- 12" length-of-pull stocks
- Standard features include dual extractors, steel-to-steel lockup, top-mounted ambidextrous safety, twin action bars, and anti-jam elevator

510 MINI SUPER BANTAM FEATURES:

- 4-Shot 20 Gauge and 3-Shot .410 Bore
- Shortest length-of-pull design, adjustable via 1" spacer
- EZ-Reach™ forends for easy cycling
- 10.5"-11.5" variable length of pull stocks
- Standard features include dual extractors, steel-to-steel lockup, top-mounted ambidextrous safety, twin action bars, and anti-jam elevator



Youth 20-gauge shotguns feature Mossberg's EZ-Reach™ forend, which is conveniently located closer to the shooter for easier pump-action cycling. The reduced distance between trigger and grip allows for better control and more comfortable trigger operation for smaller hands.

500 BANTAM // 3" Chamber, EZ-Reach Forend (12 and 20 GA), 13" Length of Pull											
TYPE	ITEM #	GA./BORE	2.75" CAP.	BARREL	SIGHTS	CHOKES	OVERALL LENGTH	LOP	FINISH	STOCK & FINISH	APPROX. WEIGHT
All-Purpose	52132	12	5+1	24" VR	Dual Bead	Accu-Set	42.62"	13"	Blue	Wood	7.25 lbs
All-Purpose	54132	20	5+1	22" VR	Dual Bead	Accu-Set	40.75"	13"	Blue	Wood	6.5 lbs
All-Purpose	50112	.410	5+1	24" VR	Dual Bead	Fixed - Full	41.75"	13"	Blue	Synthetic (Black)	6 lbs

500 BANTAM COMBO // 3" Chamber, Multi-Season Two-Barrel Set, EZ-Reach Forend, 13" Length of Pull											
TYPE	ITEM #	GA./BORE	2.75" CAP.	BARREL	SIGHTS	CHOKES	OVERALL LENGTH	LOP	FINISH	STOCK & FINISH	APPROX. WEIGHT
Field/Deer	54188	20	5+1	22" VR	Dual Bead	Accu-Set	40.75"	13"	Blue	Wood	6.5 lbs
Combo		20	5+1	24"	Adj. Rifle	Fully Rifled Bore	42.75"	13"	Blue	Wood	6.75 lbs

500 FLEX YOUTH/COMBOS											
TYPE	ITEM #	GA./BORE	2.75" CAP.	BARREL	SIGHTS	CHOKES	OVERALL LENGTH	LOP	FINISH	STOCK & FINISH	APPROX. WEIGHT
NEW FLEX Youth	54334	20	5+1	22" VR	Dual Bead	Accu-Set	34.5"	12.5"	Blue	EZ-Reach Forend/FLEX Compact Synthetic	6.5 lbs
NEW FLEX Youth	54330	20	5+1	22" VR	Dual Bead	Accu-Set	34.75"	12.75"-14.625"	Blue	EZ-Reach Forend/FLEX 4 Pos. Adj.	6.5
Field/Deer Combo		20	5+1	24"	Adj. Rifle	Fully Rifled Bore	36.75"	12.75"-14.625"	Blue	EZ-Reach Forend/ FLEX 4 Pos. Adj.	6.75

500 SUPER BANTAM // 3" Chamber, Variable LOP Synthetic Stock with 12" to 13" Length of Pull											
TYPE	ITEM #	GA./BORE	2.75" CAP.	BARREL	SIGHTS	CHOKES	OVERALL LENGTH	LOP	FINISH	STOCK & FINISH	APPROX. WEIGHT
500 SUPER BANTAM - ALL-PURPOSE											
All-Purpose	54160	20	5+1	22" VR	Dual Bead	Accu-Set	39.75**	12"-13"	Blue	Variable LOP Syn./Spacer (Serenity)	5.25 lbs
All-Purpose	54210	20	5+1	22" VR	Dual Bead	Accu-Set	39.75**	12"-13"	Blue	Variable LOP Syn./Spacer (Black)	5.25 lbs
All-Purpose - Left-Handed	59822	20	5+1	22" VR	Dual Bead	Accu-Set	39.75**	12"-13"	Blue	Variable LOP Syn./Spacer (Black)	5.25 lbs

500 SUPER BANTAM - WATERFOWL											
TYPE	ITEM #	GA./BORE	2.75" CAP.	BARREL	SIGHTS	CHOKES	OVERALL LENGTH	LOP	FINISH	STOCK & FINISH	APPROX. WEIGHT
Waterfowl	54218	20	5+1	22" VR	Adj. FO	Accu-Set	39.75**	12"-13"	MO Shadowgrass Blades	Variable LOP Syn./Spacer (Shad. Blades)	5.25 lbs

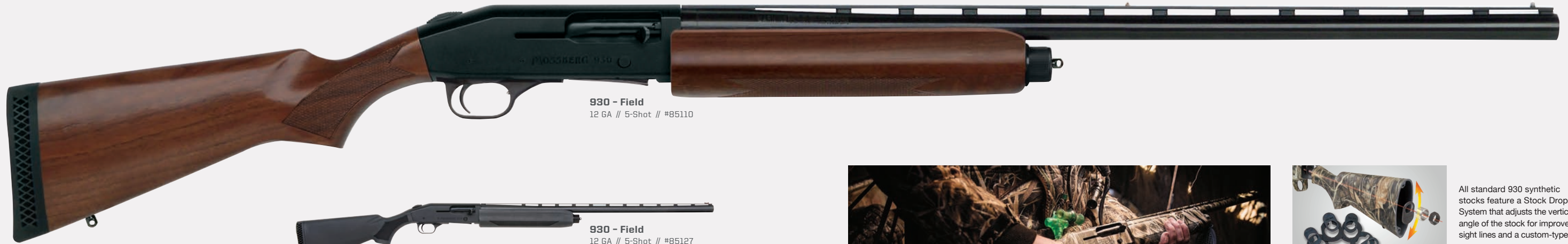
500 SUPER BANTAM - TURKEY											
TYPE	ITEM #	GA./BORE	2.75" CAP.	BARREL	SIGHTS	CHOKES	OVERALL LENGTH	LOP	FINISH	STOCK & FINISH	APPROX. WEIGHT
Turkey	54157	20	5+1	22" VR	Adj. FO	X-Full	39.75**	12"-13"	MO Obsession	Variable LOP Syn./Spacer (Obsession)	5.25 lbs

500 SUPER BANTAM COMBOS // 3" Chamber, Multi-Season Two-Barrel Set, Variable LOP Synthetic Stock with 12" to 13" Length of Pull											
TYPE	ITEM #	GA./BORE	2.75" CAP.	BARREL	SIGHTS	CHOKES	OVERALL LENGTH	LOP	FINISH	STOCK & FINISH	APPROX. WEIGHT
Field/Deer	54215	20	5+1	22" VR	Dual Bead	Accu-Set	39.75**	12"-13"	MO Break-Up Country	Variable LOP Syn./Spacer (BU Country)	5.25 lbs
Combo		20	5+1	24"	Adj. Rifle	Fully Rifled Bore	41.75**	12"-13"	MO Break-Up Country	Variable LOP Syn./Spacer (BU Country)	5.25 lbs
Field/Deer	54250	20	5+1	22" VR	Dual Bead	Accu-Set	39.75**	12"-13"	Blue	Variable LOP Syn./Spacer (Black)	5.25 lbs
Combo		20	5+1	24"	Adj. Rifle	Fully Rifled Bore	41.75**	12"-13"	Blue	Variable LOP Syn./Spacer (Black)	5.25 lbs

505 YOUTH // 3" Chamber, EZ-Reach Forend (20 GA), 12" Length of Pull											
TYPE	ITEM #	GA./BORE	2.75" CAP.	BARREL	SIGHTS	CHOKES	OVERALL LENGTH	LOP	FINISH	STOCK & FINISH	APPROX. WEIGHT
All-Purpose	57110	20	4+1	20" VR	Dual Bead	Accu-Set	37.5"	12"	Blue	Wood	5.25 lbs
All-Purpose	57120	.410	4+1	20" VR	Dual Bead	Fixed - Modified	37.5"	12"	Blue	Wood	5.25 lbs

510 MINI SUPER BANTAM // Variable LOP Synthetic Stock with 10.5" to 11.5" Length of Pull											
TYPE	ITEM #	GA./BORE	2.75" CAP.	BARREL	SIGHTS	CHOKES	OVERALL LENGTH	LOP	FINISH	STOCK & FINISH	APPROX. WEIGHT
All-Purpose	50498	20	3+1 (2.75")	18.5" VR	Dual Bead	Accu-Set	34.75**	10.5"-11.5"	Muddy Girl Serenity	Variable LOP Syn./Spacer (Serenity)	5 lbs
All-Purpose	50497	20	3+1 (2.75")	18.5" VR	Dual Bead	Accu-Set	34.75**	10.5"-11.5"	MO Break-Up Country	Variable LOP Syn./Spacer (BU Country)	5 lbs
All-Purpose	50485	20	3+1 (2.75")	18.5" VR	Dual Bead	Accu-Set	34.75**	10.5"-11.5"	Blue	Variable LOP Syn./Spacer (Black)	5 lbs
All-Purpose	50362	.410	2+1 (2.5")	18.5" VR	Dual Bead	Fixed - Modified	34.75**	10.5"-11.5"	Muddy Girl Serenity	Variable LOP Syn./Spacer (Serenity)	5 lbs
All-Purpose	50355	.410	2+1 (2.5")	18.5" VR	Dual Bead	Fixed - Modified	34.75**	10.5"-11.5"	MO Break-Up Country	Variable LOP Syn./Spacer (BU Country)	5 lbs
All-Purpose	50358	.410	2+1 (2.5")	18.5" VR	Dual Bead	Fixed - Modified	34.75**	10.5"-11.5"	Blue	Variable LOP Syn./Spacer (Black)	5 lbs

*Overall Length: Measured when stock is set at its minimum length of pull. VR: Vent rib. LOP: Length of pull. Accu-Set: Includes Full, Modified and Improved Cylinder choke tubes. Variable LOP Syn./Spacer: Variable length of pull between 10.5" and 11.5" by use of included stock spacer. MO: Mossy Oak Brand Camo, Mossy Oak, Break-Up, and Obsession are registered trademarks of Haas Outdoors, Inc. Muddy Girl is a registered trademark owned by Sirphis, LLC. All models include a free gun lock.



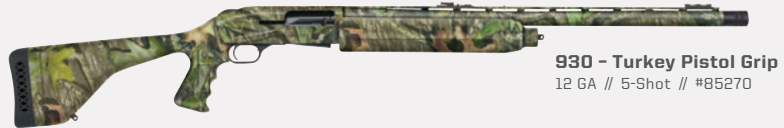
930 - Field
12 GA // 5-Shot // #85110



930 - Field
12 GA // 5-Shot // #85127



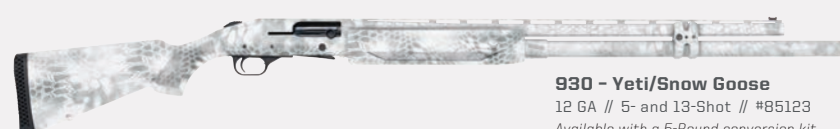
930 - Turkey/Field
12 GA // 5-Shot // #85213



930 - Turkey Pistol Grip
12 GA // 5-Shot // #85270



930 - Waterfowl
12 GA // 5-Shot // #85212



930 - Yeti/Snow Goose
12 GA // 5- and 13-Shot // #85123
Available with a 5-Round conversion kit.



930 - Slugster®
12 GA // 5-Shot // #85232



930 - Field/Security Combo
12 GA // 5-Shot // #85325

For any hunter looking for a go-to, smooth-cycling autoloading shotgun for the field, blind, or busting clays, we have a 930 that fits the bill. Rugged and dependable with a dual gas-vent system for recoil management, the 930 is built to last season after season.

FEATURES:

- 5-Shot and 13-Shot
- 12 Gauge
- Dual gas-vent system
- Quick-empty magazine release button for easy unloading
- Drilled and tapped receiver
- Top-mounted safety
- Adjustable Stock Drop System on synthetic models
- 2-barrel combo models for use in multiple seasons
- Fiber-optic sights on turkey and waterfowl models



All standard 930 synthetic stocks feature a Stock Drop System that adjusts the vertical angle of the stock for improved sight lines and a custom-type fit.



930 sight offerings include:
[TOP ROW] Adjustable Front/Rear Fiber-Optic (Turkey);
[BOTTOM ROW] Bead (Field), Fiber-Optic Front (Waterfowl), and Adjustable Rifle (Slug).

930 FIELD // 3" Chamber

TYPE	ITEM #	GA.	2.75" CAP.	BARREL	SIGHTS	CHOKES	OVERALL LENGTH	LOP	BARREL FINISH	STOCK & FINISH	APPROX. WEIGHT
930 FIELD											
Field	85127	12	4+1	28" VR	FO Front	Accu-Set	48.5"	14"	Matte Blue	Synthetic (Black)	7.75 lbs
Field	85110	12	4+1	28" VR	Bead	Accu-Set	48.5"	14"	Blue	Walnut	7.75 lbs

930 TURKEY/FIELD

Turkey/Field	85213	12	4+1	26" VR	FO Front	Accu-Set & XX-Full Ptd. Tube	46.5"	14"	MO Bottomland	Synthetic (Bottomland)	7.5 lbs
--------------	-------	----	-----	--------	----------	------------------------------	-------	-----	---------------	------------------------	---------

930 TURKEY

Turkey	85222	12	4+1	24" VR	Adj. FO	XX-Full Tube	44.5"	14"	MO Obsession	Synthetic (Obsession)	7.5 lbs
Turkey - P. Grip	85270	12	4+1	24" VR	Adj. FO	XX-Full Tube	43.5"	13"	MO Obsession	Full-Length Syn./Pistol Grip	7.5 lbs

930 WATERFOWL

Waterfowl	85212	12	4+1	28" VR	FO Front	Accu-Set	48.5"	14"	MO Shadowgrass Blades	Synthetic (Shadowgrass Blades)	7.75 lbs
-----------	-------	----	-----	--------	----------	----------	-------	-----	-----------------------	--------------------------------	----------

930 SNOW GOOSE

Hunting/Waterfowl	85123	12	12+1	28" VR	FO Front	Accu-Set	52.5"	14"	Kryptek Yeti	Synthetic (Kryptek Yeti)	8.25 lbs
			4+1	28" VR	FO Front	Accu-Set	48.5"	14"	Kryptek Yeti	Synthetic (Kryptek Yeti)	7.75 lbs

930 SLUGSTER®

Deer	85232	12	4+1	24"	ISB	Fully Rifled Bore	44.5"	14"	Matte Blue	Synthetic- Monte Carlo (Black)	7.5 lbs
------	-------	----	-----	-----	-----	-------------------	-------	-----	------------	--------------------------------	---------

930 COMBOS // Multidiscipline Two-Barrel Set

TYPE	ITEM #	GA.	2.75" CAP.	BARREL	SIGHTS	CHOKES	OVERALL LENGTH	LOP	BARREL FINISH	STOCK & FINISH	APPROX. WEIGHT
Deer/Waterfowl	85238	12	4+1	24"	Adj. Rifle	Fully Rifled Bore	44.5"	14"	Matte Blue	Synthetic (Black)	7.5 lbs
Combo				28" VR	FO Front	Accu-Set	48.5"	14"	Matte Blue	Synthetic (Black)	7.75 lbs
Field/Security	85325	12	4+1	28" VR	Bead	Accu-Set	48.5"	14"	Blue	Synthetic (Black)	7.5 lbs
Combo				18.5"	Bead	Cylinder Bore	39"	14"	Blue	Synthetic (Black)	6.75 lbs

All 930 models come factory assembled. LOP: Length of pull. Accu-Set: includes Full, Modified and Improved Cylinder choke tubes. VR: Vent rib. Pistol Grip: Full-length stock with pistol grip. FO Front: Fiber-optic front bead sight. Adj. FO: Front and rear fiber-optic sights adjust for windage and elevation. ISB: Integral scope base (cantilevered). MO: Mossy Oak Brand Camo. Mossy Oak, Obsession, and Shadowgrass Blades are registered trademarks of Haas Outdoor, Inc. Kryptek and Yeti are registered trademarks of Kryptek Outdoor Group, Inc. All models include a free gun lock.



NEW 935 Magnum - Turkey
12 GA // #81046



935 Magnum - Turkey/Pistol Grip
12 GA // #82450



935 Magnum - Waterfowl
12 GA // #81023



935 Magnum - Waterfowl
12 GA // #81000

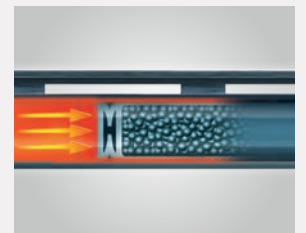
FEATURES:

- Chambers 2.75", 3", and 3.5" shotshells
- 12 Gauge
- Dual gas-vent system
- Quick-empty magazine release for easy unloading
- Drilled and tapped receiver
- Top mounted safety
- Overbored barrels offer 10-gauge dimensions for the entire length of the barrel, providing less pellet deformation, resulting in tighter, more uniform patterns
- Interchangeable chokes
- Fiber-optic sights

Sometimes you need the extra punch of a magnum — and that's where our powerful 935 autoloading shotgun comes into the picture. This 3.5" chambered beast offers smooth-as-silk shooting thanks to its dual gas-vent system. And for game requiring the most powerful magnum loads, the 935 delivers unequaled down-range performance.



Standard 935 synthetic stocks feature a Stock Drop System that adjusts the vertical angle of the stock for improved sightlines and a custom-type fit.



935 models are overbored to 10 Gauge dimensions, which reduces pellet deformation for exceptionally uniform dense patterns.



For optimal target acquisition in wet weather or low-light hunting conditions, 935 models come with (top right) front fiber-optic (Waterfowl) or adjustable front/rear fiber-optic sights (Turkey).



For maximum hunting flexibility, 935 Magnum autoloading shotguns handle heavy-hitting 2.75" loads as well as 3" and 3.5" shotshells.

935 MAGNUM // 3.5" Chamber											
TYPE	ITEM #	GA.	2.75" CAP.	BARREL	SIGHTS	CHOKES	OVERALL LENGTH	LOP	FINISH	STOCK	APPROX. WEIGHT
935 MAGNUM - TURKEY											
NEW Turkey	81046	12	4+1	22" VR OB	FO Front	X-Factor Ported Turkey Tube	43"	14"	MO Bottomland	Synthetic (Bottomland)	7.5 lbs
Turkey - P. Grip	82540	12	4+1	22" VR OB	Adj. FO	X-Factor Ported Turkey Tube	42"	13"	MO Obsession	Full-Length Syn./Pistol Grip	7.5 lbs
935 MAGNUM - WATERFOWL											
Waterfowl	81000	12	4+1	28" VR OB	FO Front	Accu-Mag Set	49"	14"	Matte Blue	Synthetic (Black)	7.75 lbs
Waterfowl	81023	12	4+1	28" VR OB	FO Front	Accu-Mag Set	49"	14"	MO Shadowgrass Blades	Synthetic (Shadowgrass)	7.75 lbs

All 935 models come factory assembled. LOP: Length of pull. Accu-Mag Set: Includes Full, Modified and Improved Cylinder choke tubes. VR: Vent rib. OB: Overbored barrel. Pistol Grip: Full-length stock with pistol grip. Adj. FO: Front and rear fiber-optic sights adjust for windage and elevation. MO: Mossy Oak Brand Camo. Mossy Oak, Obsession, and Shadowgrass Blades are registered trademarks of Haas Outdoor, Inc. All models include a free gun lock.

PRO-SERIES WATERFOWL Autoloading Shotguns



930 Pro-Series - Waterfowl
12 GA // #85141

935 Magnum Pro-Series - Waterfowl
12 GA // #82042

When the going gets tough, the tough get their hands on our 930 or 935 Pro-Series Waterfowl shotguns. Built to perform under the muddiest, muckiest, and wettest of conditions, these autoloading shotguns feature Pro-Series coatings and finishes that stand up to the elements hunt after hunt and season after season. No hardcore duck hunter should ever enter the blind without one.

FEATURES:

- 5-Shot
- 12 Gauge
- Stainless steel return spring
- Beveled loading gate
- Interchangeable choke tubes
- Stock drop shims for a custom fit
- Standard features of our 930/935 include dual gas-vent system, quick-empty mag release for easy unloading, and drilled and tapped receiver
- 935 has a standard overbored barrel



Premium Finishes for Reliability and Increased Performance

- Boron-nitride-coated gas piston, piston rings, magazine tube, hammer, sear, return spring plunger, and return spring tube prevent corrosion and facilitate cleaning (in blue).
- The shell stop, bolt slide, and elevator receive additional finishing to reduce friction for faster follow-up shots (in yellow).
- The stainless-steel return spring ensures reliable, corrosion-resistant operation of the recoil system.

930 PRO-SERIES / 935 MAGNUM PRO-SERIES												
TYPE	ITEM #	GA.	CHAMBER	2.75" CAPACITY	BARREL	SIGHTS	CHOKES	OVERALL LENGTH	LOP	BARREL FINISH	STOCK	APPROX. WEIGHT
930 PRO-SERIES WATERFOWL												
Pro-Series - Waterfowl	85141	12	3"	4+1	28" VR	FO Front	Accu-Set	48.5"	14"	MO Shadowgrass Blades	Synthetic	7.75 lbs
935 MAGNUM PRO-SERIES WATERFOWL												
Pro-Series - Waterfowl	82042	12	3.5"	4+1	28" VR OB	FO Front	Accu-Mag	49"	14"	MO Shadowgrass Blades	Synthetic	7.75 lbs

All 930 and 935 models come fully factory assembled. **Premium Coatings/Finishing:** Includes boron-nitride-coated gas piston, piston rings, magazine tube, hammer, sear, return spring plunger, and return spring tube; shell stop, bolt slide, and elevator receive additional finishing to reduce friction; stainless steel return spring. **VR:** Vent rib. **OB:** Overbored barrel. **LOP:** Length of pull. **Accu-Set:** Includes Full, Modified and Improved Cylinder choke tubes. **Accu-Mag:** Set includes Full, Modified and Improved Cylinder choke tubes. **FO Front:** Fiber-optic front bead sight. **MO:** Mossy Oak Brand Camo. Mossy Oak and Shadowgrass Blades are registered trademarks of Haas Outdoor, Inc. All models include a free gun lock.

930™ PRO-SERIES SPORTING Autoloading Shotgun



930 Pro-Series Sporting
12 GA // #85139



It's time to conquer clays with the 930 Pro-Series Sporting. These high-performance autoloading shotguns are competition ready and are sure to give you that competitive edge. The unique stock design fits most shooters right out of the box, with sight lines that help you acquire targets faster than ever before.

FEATURES:

- 5-Shot
- 12 Gauge
- Boron-nitride-coated parts
- Beveled loading gate
- Interchangeable choke tubes
- Stock designed in collaboration with OSP Shooting School instructor Gil Ash
- Stock Drop System for a custom fit
- 3-piece Briley® choke set
- Cerakote® finish
- Standard features include dual gas-vent system, quick-empty mag release for easy unloading



The TriComp sight utilizes nine interchangeable LitePipes in three colors and three shapes of varied height for superior sighting for any competitive environment.



Briley® Chokes (Skeet, Improved Cylinder, and Modified) come engraved with constriction for easy selection and are housed in a handy carrying case.



Special Sporting Clays stock is designed to fit right out of the box, and its Stock Drop System allows five drop-at-comb adjustments to further fit any shooter.



Receiver boasts a durable Cerakote finish, and the beveled loading gate and extra finishing on the elevator facilitate quick and easy reloads.

930 PRO-SERIES SPORTING // 3" Chamber												
TYPE	ITEM #	GA.	CAPACITY	BARREL	SIGHTS	CHOKES	LENGTH	LOP	FINISH	FINISH	STOCK	WEIGHT
Pro-Series - Sporting	85139	12	4+1	28" VR	TriComp FO	Briley Ext./Accu-Set	48.5"	14"	Cerakote (Tungsten)	Blued	Walnut	7.75 lbs

All 930 models come fully factory assembled. **Premium Coatings/Finishing:** Includes boron-nitride-coated gas piston, piston rings, magazine tube, hammer, sear, return spring plunger, and return spring tube; shell stop, bolt slide, and elevator receive additional finishing to reduce friction. **VR:** Vent rib. **LOP:** Length of pull. **Briley Ext.:** Briley extended choke set includes Skeet, Improved Cylinder and Modified choke tubes and carrying case. Chokes are fully compatible with other Mossberg Accu-Choke tubes. Briley is a registered trademark of Briley Manufacturing. **TriComp FO:** HIVIZ TriComp fiber-optic sights come with 9 interchangeable LitePipes. HIVIZ and TriComp are registered trademarks of HIVIZ Shooting Systems. **Engraved:** Receiver is engraved with Pro-Series sporting logo. All models include a free gun lock.

SA-20™ / SA-28™ YOUTH Autoloading Shotguns



SA-20 All-Purpose
20 GA // Bantam/Youth // #75793



SA-28 All-Purpose
28 GA // Bantam/Youth // #75769



Our popular smaller-gauge autoloading shotguns come in compact and lightweight youth models. These soft-shooting shotguns offer a shorter barrel and more compact length of pull, which provides a well-balanced swing and comfortable fit.

FEATURES:

- 5-Shot
- 20 and 28 Gauge
- 12.5" length of pull
- Comfortable handling and fit for smaller-stature users
- Smooth-cycling gas-operated system
- Interchangeable chokes
- Light carry weight

MOSSBERG INTERNATIONAL SA-20 / SA-28 YOUTH												
TYPE	ITEM #	GA.	CHAMBER	2.75" CAP.	BARREL	SIGHTS	CHOKES	OVERALL LENGTH	LOP	METAL FINISH	STOCK/FINISH	APPROX. WEIGHT
SA-28 BANTAM/YOUTH – ALL-PURPOSE FIELD												
Youth – Black Synth.	75769	28	2.75"	4+1	24" VR	Front Bead	Sport Set	40.75"	12.5"	Matte Blue	Synthetic (Black)	5.5 lbs
SA-20 BANTAM/YOUTH – ALL-PURPOSE FIELD												
Youth – Walnut	75793	20	3"	4+1	24" VR	Front Bead	Sport Set	40.75"	12.5"	Blue (High Polish)	Walnut (High Gloss)	6.25 lbs
Youth – Black Synth.	75770	20	3"	4+1	24" VR	Front Bead	Sport Set	40.75"	12.5"	Matte Blue	Synthetic (Black)	5.5 lbs

LOP: Length of pull. Sport Set: Includes Full, Improved Modified, Modified, Improved Cylinder and Cylinder choke tubes. VR: Vent rib. Pistol Grip: Full-length stock with pistol grip. MO: Mossy Oak Brand Camo. Mossy Oak and Obsession are registered trademarks of Haas Outdoor, Inc. All models include a free gun lock.

SA-20™ / SA-28™ Autoloading Shotguns



SA-20 All-Purpose
20 GA // #75772



SA-20 All-Purpose
20 GA // Walnut // #75789



SA-20 Turkey
20 GA // #75790



SA-20 Railed
20 GA // Pistol Grip // #75780

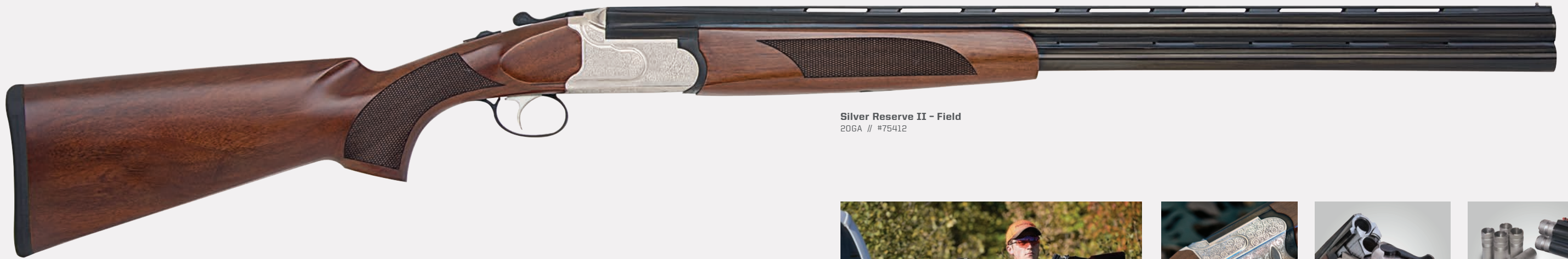
Whether you're a first-timer or accomplished in the shooting sports, you can't go wrong with the SA-20 and SA-28 firearms. Lightweight in the field, these shotguns provide a quick swing when hunting nimble upland and woodland targets. Select models are offered with handsome checkered walnut stocks.

FEATURES:

- 5-Shot
- 20 and 28 Gauge
- Smooth-cycling gas-operated system
- Interchangeable chokes
- Lighter carry weight

MOSSBERG INTERNATIONAL SA-20 / SA-28												
TYPE	ITEM #	GA.	CHAMBER	2.75" CAP.	BARREL	SIGHTS	CHOKES	OVERALL LENGTH	LOP	METAL FINISH	STOCK/FINISH	APPROX. WEIGHT
SA-28 ALL-PURPOSE FIELD												
All-Purpose – Walnut	75792	28	2.75"	4+1	26" VR	Front Bead	Sport Set	44.75"	14.5"	Blue (High Polish)	Walnut (High Gloss)	6.5 lbs
SA-20 ALL PURPOSE FIELD												
All-Purpose – Walnut	75789	20	3"	4+1	26" VR	Front Bead	Sport Set	44.75"	14.5"	Blue (High Polish)	Walnut (High Gloss)	6.5 lbs
All-Purpose	75771	20	3"	4+1	28" VR	Front Bead	Sport Set	46.5"	14.25"	Matte Blue	Synthetic (Black)	6 lbs
All-Purpose	75772	20	3"	4+1	26" VR	Front Bead	Sport Set	44.5"	14.25"	Matte Blue	Synthetic (Black)	5.75 lbs
SA-20 TURKEY // Top Rail, Easy Load Elevator												
Turkey	75790	20	3"	4+1	22" VR	Fiber-Optic 3-Dot	Ext. Turkey Tube	40.5"	14.25"	Matte Blue	Synthetic (MO Obsession)	5.5 lbs
SA-20 RAILED // Magazine Tube Cap with Tri-Rail, Top Rail, Easy Load Elevator												
All-Purpose – P. Grip	75780	20	3"	4+1	20" VR	Ghost Ring/FO Front	Cylinder Bore	39"	12.75"	Matte Blue	Synthetic/Pistol Grip (Black)	5.75 lbs

LOP: Length of pull. Sport Set: Includes Full, Improved Modified, Modified, Improved Cylinder and Cylinder choke tubes. VR: Vent rib. Pistol Grip: Full-length stock with pistol grip. MO: Mossy Oak Brand Camo. Mossy Oak and Obsession are registered trademarks of Haas Outdoor, Inc. All models include a free gun lock.



Silver Reserve II - Field
20GA // #75412



Silver Reserve II - Sporting
12 GA // #75451



Silver Reserve II - Field Youth
20GA // #75457



Silver Reserve II - Field
.410 Bore // #75417



Silver Reserve II - Sporting
12 GA // #75444

FEATURES:

- Select black walnut stocks
- Rich scrollwork
- 5-choke sport set or field set
- Extractor and ejector models
- Corrosion-resistant chrome-lined barrels and chambers
- Tang-mounted safety/barrel selector
- Dual locking lugs

Whether you find yourself on a clays course or an upland hunt, you can't go wrong with our popular over-and-under, the Silver Reserve II. Durable, reliable, and affordable, this well-appointed break-action shotgun is loaded with performance-enhancing options and refined details traditionally reserved for high-end double guns.



Rich scroll engraving and select black walnut stocks set the aesthetic tone for the well-appointed Silver Reserve II over-and-unders.



Silver Reserve II Sporting models feature shell ejectors — plus ported barrels, dual bead fiber-optic sights, high-profile wide rib, and choice of standard or raised comb stock.



All models (excluding .410 Bore) come with a 5-choke Sport Set (top: Extended, Silver finish) or Field Set (bottom: Flush, Blued finish). Combo models have 10 total chokes.

MOSSBERG INTERNATIONAL SILVER RESERVE II – FIELD

TYPE	ITEM #	GA./BORE	CHAMBER	BARREL	SIGHTS	CHOKES	OVERALL LENGTH	LOP	FINISH	STOCK	DAH	DAC	APPROX. WEIGHT
SILVER RESERVE II FIELD W/SHELL EXTRACTORS // Scroll Engraving, Chrome Plated Bores, Dual Locking Lugs													
Field	75412	12	3"	28" VR	Front Bead	Field Set (5 Total)	45"	14"	Blued Bbls, Silver Rec.	Satin/Select Black Walnut	2.25"	1.5"	7.5 lbs
Field	75414	20	3"	26" VR	Front Bead	Field Set (5 Total)	43"	14"	Blued Bbls, Silver Rec.	Satin/Select Black Walnut	2.25"	1.5"	7 lbs
Field	75419	28	2.75"	26" VR	Front Bead	Field Set (5 Total)	43"	14"	Blued Bbls, Silver Rec.	Satin/Select Black Walnut	2.25"	1.5"	7 lbs
Field	75417	.410	3"	26" VR	Front Bead	Fixed Modified, Fixed Full	43"	14"	Blued Bbls, Silver Rec.	Satin/Select Black Walnut	2.25"	1.5"	6.5 lbs

SILVER RESERVE II FIELD YOUTH W/SHELL EXTRACTORS // 13.25" Length of Pull, Scroll Engraving, Chrome Plated Bores, Dual Locking Lugs

Bantam Field	75457	20	3"	26" VR	Front Bead	Field Set (5 Total)	42"	13.25"	Blued Bbls, Silver Rec.	Satin/Select Black Walnut	2.25"	1.5"	7 lbs
--------------	-------	----	----	--------	------------	---------------------	-----	--------	-------------------------	---------------------------	-------	------	-------

SILVER RESERVE II FIELD COMBO W/SHELL EXTRACTORS // 2 Barrel/Forend Sets, Scroll Engraving, Chrome Plated Bores, Dual Locking Lugs

12/20 Gauge	75442	12	3"	28" VR	Front Bead	Two Field Sets	45"	14"	Blued Bbls, Silver Rec.	Satin/Select Black Walnut	2.25"	1.5"	7.5 lbs
Field Combo		20	3"	26" VR	Front Bead	(10 Total)	43"	14"			2.25"	1.5"	7 lbs

Shell Extractors: Lifts shells from the chamber for easy removal when action is opened. **Chokes/Field Set:** Includes Cylinder, Improved Cylinder, Modified, Improved Modified and Full chokes (flush, blued finish) for each gauge/barrel set. **VR:** Vent rib. **LOP:** Length of pull. **Stock Drop:** Drop at comb; **DAH:** Drop at heel. All models include a free gun lock.

MOSSBERG INTERNATIONAL SILVER RESERVE II – SPORTING

TYPE	ITEM #	GA./BORE	BARREL	SIGHTS	CHOKES	OVERALL LENGTH	LOP	FINISH	STOCK	DAH	DAC	APPROX. WEIGHT
SILVER RESERVE II SPORT W/SHELL EJECTORS // Ported Barrels, Extra-Wide 10mm Rib, Chrome Plated Bores, Dual Locking Lugs												
Sporting	75444	12	28" VR	Dual Bead FO	Sport Set (5 Total)	45"	14"	Blued Bbls, Silver Rec.	Satin/Select Black Walnut	2.25"	1.5"	7.5 lbs
SILVER RESERVE II SUPER SPORT W/SHELL EJECTORS // Ported Barrels, Extra-Wide 12mm/High-Profile 10mm Rib, Chrome Plated Bores, Dual Locking Lugs												
Sporting	75451	12	30" HVR	Dual Bead FO	Sport Set (5 Total)	47.5"	14.5"	Blued Bbls, Silver Rec.	Raised Comb, Satin/Select Black Walnut	2.12"	1.12"	7.5 lbs
Sporting	75452	12	32" HVR	Dual Bead FO	Sport Set (5 Total)	49.5"	14.5"	Blued Bbls, Silver Rec.	Raised Comb, Satin/Select Black Walnut	2.12"	1.12"	7 lbs

Shell Ejectors: Ejects fired shells when action is opened. **Chokes/Sport Set:** Includes Skeet, Improved Cylinder, Modified, Improved Modified and Full chokes (extended, checkered, silver finish). **VR:** 10mm wide vent rib, 10mm high, 12mm wide. **LOP:** Length of pull. **Stock Drop:** Drop at comb; **DAH:** Drop at heel. All models include a free gun lock.



RIFLES

MOSSBERG

BOLT-ACTION / LEVER-ACTION





NEW Patriot - Synthetic/Threaded Barrel
450 Bushmaster // #28013



All standard Patriot barrels have a recessed match crown. The threaded barrels have an 11-degree match crown.



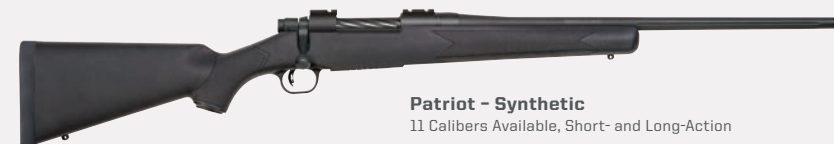
Patented LBA® Lightning Bolt-Action Trigger is user-adjustable from 2 to 7 pounds. New bolt design is streamlined and checked for easy, efficient operation.



Patriot - Walnut
11 Calibers Available, Short- and Long-Action



NEW Patriot - Walnut/Threaded Barrel
450 Bushmaster // #28043



Patriot - Synthetic
11 Calibers Available, Short- and Long-Action



Patriot - Synthetic/Cerakote
11 Calibers Available, Short- and Long-Action



Behind every revolution is a patriot. And these value-rich bolt-action rifles are no exception. With models to suit any style, the Patriot combines modern innovation with traditional styling. Attractive, accurate, and feature-rich, it's the one gun that does it all. The Patriot series is built on value and success in the field.

FEATURES:

- Short- and long-action calibers
- Drop box magazine
- Fluted barrel
- Spiral fluted bolt
- Recessed barrel crown
- Patented LBA® user-adjustable trigger (2 to 7 lbs)
- New 450 Bushmaster models have threaded barrels with 11/16" - 24 TPI

PATRIOT

ITEM NUMBER (ARRANGED BY CALIBER)																					
SHORT-ACTION CALIBERS								LONG-ACTION CALIBERS													
6.5 CREEDMOOR	22-250 REM	243 WIN	7MM-08 REM	308 WIN	25-06 REM	270 WIN	30-06 SPRG	7MM REM MAG	300 WIN MAG	338 WIN MAG	375 RUGER	450 BUSHMSTR	CAPACITY	BARREL	SCOPE BASES OR SIGHTS	OVERALL LENGTH*	LOP	TWIST**	BARREL FINISH	STOCK/FINISH	APPROX. WEIGHT
PATRIOT // Fluted Barrels (Excluding Rifle Sight Models)																					
28026	27841	27835	27849	27861	27876	27882	27890	27894	27900	27904			5+1 (STD) 3+1 (MAG)	22" Fluted	Weaver-Style Bases	42.75**	13.75"	**See Below	Matte Blue	Walnut Classic Style	7 lbs
												28043 NEW	4+1	20" Threaded	Weaver-Style Bases	40.75**	13.75"	1:24	Matte Blue	Walnut Classic Style	7 lbs
							27907						3+1	22" Fluted	Adjustable FO Sights	42.75"	13.75"	1:10	Matte Blue	Walnut Classic Style	7 lbs
27909	27843	27838	27851	27864	27877	27884	27892	27895	27902	27905			5+1 (STD) 3+1 (MAG)	22" Fluted	Weaver-Style Bases	42.75**	13.75"	**See Below	Matte Blue	Synthetic (Black) Classic Style	6.5 lbs
												28013 NEW	4+1 (STD)	20" Threaded	Weaver-Style Bases	40.75**	13.75"	1:24	Matte Blue	Synthetic (Black) Classic Style	6.5 lbs
PATRIOT WITH CERAKOTE // Cerakote (Stainless) Finished Barrel and Bolt																					
28008	28068 NEW	28005	28006	28007	28069 NEW	28009	28010	28070 NEW	28071 NEW	28072 NEW			5+1 (STD) 3+1 (MAG)	22" Fluted	Weaver-Style Bases	42.75**	13.75"	**See Below	Cerakote (Stainless)	Synthetic (Black) Classic Style	6.5 lbs
												28073 NEW	3+1	22" Fluted	Adjustable FO Sights	42.75**	13.75"	1:12	Cerakote (Stainless)	Synthetic (Black) Classic Style	6.5 lbs

*Overall Length: All short-action calibers reduce the overall length by .5". **Twist: 6.5 Creedmoor models have a twist of 1:8"; 7mm REM MAG and 7mm-08 REM models: 1:9.5"; 22-250 REM models: 1:14"; .375 RGR models: 1:12". All other calibers listed have a 1:10" twist. LBA: Patriot Lightning Bolt-Action Trigger is user-adjustable from 2 to 7 lbs. Cross-Bolt: 375 Ruger laminate and walnut stocks have double cross-bolt supports. Adjustable FO Sights: Front fiber-optic sight, rear sight is adjustable for windage and elevation. LOP: Length of pull. Cerakote (Stainless): Stainless-steel-colored polymer-ceramic coating. Cerakote is a registered trademark of NIC Industries, Inc. All models include a free gun lock.

PATRIOT™ VORTEX® Bolt-Action Rifles



Patriot Vortex Scoped Combo - Walnut
11 Calibers Available, Short- and Long-Action



Patriot Vortex Scoped Combo - Synthetic
11 Calibers Available, Short- and Long-Action



Crossfire® II 3-9x40 rifle scope with Dead-Hold® BDC reticle
With long eye relief, a fast-focus eyepiece, fully multicoated lenses, and resettable MOA turrets, there's no compromising on the Crossfire II. Clear, tough, and bright, the hard anodized single-piece aircraft-grade aluminum tube is nitrogen purged and O-ring sealed for water- and fog-proof performance. The Dead-Hold BDC reticle's customized hashmark design helps eliminate guesswork on holdover and windage corrections. It's good at varying ranges where estimating holdover is a concern.

As the old saying goes, seeing is believing. The optic on these Patriot models is a Vortex Crossfire® II 3-9x40 rifle scope with Dead-Hold® BDC reticles. With long eye relief, a fast-focus eyepiece, fully multicoated lenses, and resettable MOA turrets, there's no compromising on the Crossfire II. Clear, tough, and bright, the hard anodized single-piece aircraft-grade aluminum tube is nitrogen purged and O-ring sealed for water- and fog-proof performance.

FEATURES:

- Drop box magazine
- Fluted barrel
- Spiral fluted bolt and streamlined bolt handle
- Recessed barrel crown
- Patented LBA® user-adjustable trigger (2-7 lbs)
- Vortex Crossfire II scope, lens caps, and Vortex rings complete the package

PATRIOT™ PREDATOR Bolt-Action Rifles



NEW Patriot Predator - Brown Cerakote / True Timber Strata
4 Calibers Available



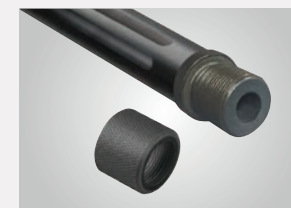
NEW Patriot Predator - Flat Dark Earth
450 Bushmaster // #28014



Suppressor ready. Optics ready. That's the Patriot Predator bolt-action rifle. Powerful and proven, it offers unmatched accuracy, dependability, and smooth triggers.

FEATURES:

- Top-mounted optics Picatinny rail
- Threaded barrel, muzzlebrake/suppressor-ready, with 11 degree match crown
- Standard Patriot features include drop box magazine, 22" or 16.25" fluted barrels, spiral fluted bolt, patented LBA® user-adjustable trigger (2-7 lbs), and an oversized bolt handle



Patriot Predator barrels come standard with threading for adding a muzzlebrake or suppressor. The 450 Bushmaster model has 11/16"-24 TPI. All other calibers have 5/8"-24 TPI. All threaded barrels have an 11 degree match crown.



A top rail makes mounting or repositioning optics quick and easy. Also shown is the rifle's streamlined bolt handle and attractive fluted bolt design.

PATRIOT VORTEX SCOPED COMBOS // Vortex Crossfire II - 3-9x40mm and Rings

ITEM NUMBER (ARRANGED BY CALIBER)											CAPACITY	BARREL	BASES	TWIST*	SCOPE/FEATURES	OVERALL LENGTH**	LOP	FINISH	BARREL STOCK	APPROX. WEIGHT
SHORT-ACTION CALIBERS					LONG-ACTION CALIBERS															
6.5 CREEDMOOR	22-250 REM	243 WIN	7MM-08 REM	308 WIN	25-06 REM	270 WIN	30-06 SPRG	7MM REM MAG	300 WIN MAG	338 WIN MAG										
28028	28057 NEW	27939	28058 NEW	27940	28059 NEW	27941	27942	28060 NEW	27943	28061 NEW	5+1 (STD) 3+1 (MAG)	22" Fluted	Weaver-Style	*See Below	Vortex Crossfire II -3-9x40mm w/Vortex Rings	42.75***	13.75"	Matte Blue Classic Style	Walnut	7 lbs
28001	28052 NEW	27932	28053 NEW	27933	28054 NEW	27934	27935	28055 NEW	27936	28056 NEW	5+1 (STD) 3+1 (MAG)	22" Fluted	Weaver-Style	*See Below	Vortex Crossfire II -3-9x40mm w/Vortex Rings	42.75***	13.75"	Matte Blue Classic Style	Synthetic (Black)	6.5 lbs

All Patriot Vortex Scoped Combos ship fully assembled. *Twist: 6.5 Creedmoor models have a twist of 1:8"; 7mm REM MAG and 7mm-08 REM models: 1:9.5"; 22-250 REM models: 1:14". All other calibers listed have a 1:10" twist. **Overall Length: All short-action calibers reduce the overall length by .5". LBA: Patriot Lightning Bolt-Action Trigger is user-adjustable from 2 to 7 lbs. LOP: Length of pull. Crossfire II: Vortex Crossfire II scope features Dead-Hold BDC reticle, lens caps, and Vortex rings. Vortex, Crossfire, and Dead-Hold are registered trademarks of Vortex Optics. All models include a free gun lock.

PATRIOT PREDATOR // Top-Mounted Rail, LBA® User-Adjustable Trigger, Fluted Threaded Barrel and Fluted Bolt

ITEM NUMBER (ARRANGED BY CALIBER)														CAPACITY	BARREL & LENGTH	BASES	TWIST*	OVERALL LENGTH	LOP	BARREL FINISH	STOCK	APPROX. WEIGHT
6.5 CREEDMOOR	22-250 REM	243 WIN	308 WIN	450 BUSHMASTER																		
27875		27873	27874		5+1	22" Fluted/Thrd	PIC Rail	*See Below	42.25"	13.75"	Matte Blue	Synthetic (Flat Dark Earth) - Classic Style	6.5 lbs									
NEW 28046	NEW 28074	NEW 28044	NEW 28045		5+1	22" Fluted/Thrd	PIC Rail	*See Below	42.25"	13.75"	Cerakote (Patriot Brown)	Synthetic (True Timber Strata) - Classic Style	6.5 lbs									
				NEW 28014	4+1	16.25" Thrd	PIC Rail	1:24	35.5"	13.75"	Matte Blue	Synthetic (Flat Dark Earth) - Classic Style	6.5 lbs									

*Twist: 6.5 Creedmoor models have a twist of 1:8"; 22-250 have a 1:14"; all other calibers listed have a 1:10" twist. LBA: Patriot Lightning Bolt-Action Trigger is user-adjustable from 2 to 7 lbs. Thrd: Threaded barrel with cap. LOP: Length of pull. New items in blue. All models include a free gun lock.

PATRIOT™ REVERE Bolt-Action Rifles



Patriot Revere - Short Action
3 Calibers Available



Patriot Revere - Long Action
3 Calibers Available



Once you lay your eyes and hands on the Revere, there's no turning back. A more classic and premium version of the Patriot, the Revere features a Premier 2.0 Grade European walnut stock that comes with a rosewood forend tip and grip cap enhanced with a maple accent spacer, providing a distinctive, high-end look.

FEATURES:

- Premier 2.0 Grade European walnut stock.
- Standard Patriot features include drop box magazine, 24" barrels, spiral fluted bolt, patented LBA® user-adjustable trigger (2-7 lbs), and a streamlined bolt handle



The Patriot Revere rifle features Premier 2.0 Grade European walnut stocks with oil finish and fine line checkering, and is distinguished by its rosewood forend tip and grip cap — bordered with a stylish contrasting maple spacer. A Mossberg monogrammed "M" proudly adorns the cap.



Patented LBA® Lightning Bolt-Action Trigger is user-adjustable from 2 to 7 pounds. Bolt handles are streamlined and checkered for a firm grip.

Barrels with recessed match crowns are standard on all Patriot Revere rifles, and come with a blued finish.

PATRIOT REVERE // 2.0 Grade European Walnut Stocks/Rosewood Forend Tip & Grip Cap/Maple Spacers, LBA® User-Adjustable Trigger, Fluted Bolt

ITEM NUMBER (ARRANGED BY CALIBER)							CAPACITY	BARREL LENGTH	BASES	TWIST*	OVERALL LENGTH**	LOP	BARREL FINISH	STOCK/FINISH/DETAILS	APPROX. WEIGHT
6.5 CREEDMOOR	243 WIN	308 WIN	270 WIN	30-06 SPRG	300 WIN MAG										
27984	27986	27983	27985	27982	27987	5+1 (STD) 3+1 (MAG)	24"	Weaver-Style	*See Below	44.75***	13.75"	Blued	2.0 Grade European Walnut w/Rosewood Forend Tip & Grip/Maple Spacer – Classic Style	7 lbs	

*Twist: 6.5 Creedmoor models have a 1:8" twist. All other calibers listed have a 1:10" twist. **Overall Length: All short-action calibers reduce the overall length by .5". LBA: Patriot Lightning Bolt-Action Trigger is user-adjustable from 2 to 7 lbs. LOP: Length of pull. All models include a free gun lock.

PATRIOT™ NIGHT TRAIN™ Bolt-Action Rifles



Patriot Night Train w/Muzzlebrake
300 WIN MAG // #27925



Patriot Night Train
308 WIN // #27923

If you're looking for an entry-level long-range rifle package with premium quality and performance, you're looking in the right place. The Patriot Night Train bolt-action rifle offers the accuracy, dependability, and crisp trigger you'll find in higher-end models. So stop searching and start shooting.

FEATURES:

- Top-mounted Picatinny rail
- Drop box magazine
- Fluted barrel
- Patented LBA® user-adjustable trigger (2-7 lbs)
- Packaged with an adjustable bipod and variable scope with flip-open lens caps
- Night Train models #27924 and #27925 are suppressor-ready



Patented LBA® Lightning Bolt-Action Trigger is user-adjustable from 2 to 7 pounds. Oversized bolt handle provides a sure grip, even with gloved hands.



Select suppressor-ready Night Train rifles include fluted, threaded barrels with removable SilencerCo 3-port muzzlebrake with ASR mount.

PATRIOT NIGHT TRAIN // Picatinny Rail, Scope, Bipod

TYPE	ITEM #	CALIBER	CAPACITY	BARREL & LENGTH	SCOPE BASE/RAIL	TWIST	SCOPE/FEATURES	OVERALL LENGTH	LOP	BARREL FINISH	STOCK	APPROX. WEIGHT
Night Train	27923	308 WIN	5+1	22" Fluted	Pic. Rail	1:10	4-16x50mm Scope/Caps, Bipod	42.25"	13.75"	Matte Blue	Syn. (Black)	8.75 lbs
Night Train	27924	308 WIN	5+1	22" Fluted/Thrd+Mzl Brk	Pic. Rail	1:10	6-24x50mm Scope/Caps, Bipod, Comb Raising Kit	44"	13.75"	Matte Blue	Syn. (OD Green)	9 lbs
Night Train	27925	300 WIN MAG	3+1	22" Fluted/Thrd+Mzl Brk	Pic. Rail	1:10	6-24x50mm Scope/Caps, Bipod, Comb Raising Kit	44.5"	13.75"	Matte Blue	Syn. (OD Green)	9 lbs
NEW Night Train	28019	6.5 Creedmoor	5+1	24" Fluted	Pic. Rail	1:8	6-24x50mm Scope/Caps, Bipod, Comb Raising Kit	42.25"	13.75"	Matte Blue	Syn. (Flat Dark Earth)	9 lbs

All Night Train models ship fully assembled. LBA: Patriot Lightning Bolt-Action Trigger is user-adjustable from 2 to 7 lbs. LOP: Length of pull. Thrd+Mzl Brk: Threaded barrel with removable SilencerCo muzzlebrake with ASR mount, thread cap is included. Syn.: Synthetic stock. Pic. Rail: Top Picatinny rail. All models include a free gun lock.

PATRIOT™ YOUTH Bolt-Action Rifles



NEW Patriot Super Bantam Scoped - True Timber Strata
4 Calibers Available

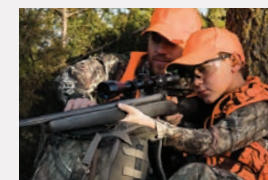


NEW Patriot Super Bantam Scoped - Muddy Girl® Serenity™
4 Calibers Available



Patriot Super Bantam Scoped - Black Synthetic
4 Calibers Available

Don't be fooled. The Patriot Youth bolt-action rifle is anything but kids' play. The perfect introductory firearm for beginner hunters, it boasts all the features you'll find in our full-sized Patriot. These Super Bantam models also offer a stock design with a 1-inch removable spacer to modify the length of pull to extend usage as the shooter grows.



Patriot Super Bantams utilize our innovative variable LOP stock with an included 1" spacer – for increasing the length of pull when the user has outgrown the smaller dimensions, or for custom fitting smaller-statured shooters.



FEATURES:

- Variable length of pull (12"-13") on Super Bantam models enhances control and comfort in smaller-stature and growing shooters
- Standard Patriot features include drop box magazine, recessed barrel crown, fluted 20" barrels, spiral fluted bolt, patented LBA® user-adjustable trigger (2-7 lbs), and streamlined bolt handle

MVP® PREDATOR Bolt-Action Rifles

MOSSBERG



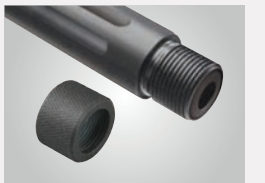
MVP Predator - Laminate
6.5 Creedmoor // #27785



With the MVP Predator bolt-action rifle, predators become unsuspecting prey. Built to protect your homestead from the predation of livestock and pets by coyotes, foxes, mountain lions, and bobcats, this bolt-action rifle is accurate and dependable, and offers our patented Lightning Bolt-Action user-adjustable trigger. MVP rifles accept commonly available AR-style magazines, making them an instant hit at home, at the range, or in the field.



A stylish two-tone spiral fluted bolt, Weaver-style scope bases, and a checkered bolt knob are shared features on MVP Predator models.



Threaded and fluted medium bull barrels are standard, with protective thread cap provided.



Patented LBA® Lightning Bolt-Action Trigger is user-adjustable from 3 to 7 pounds, and is standard on all MVP models.



MVP Varmint and Predator rifles accept and feed from standard AR-style magazines. For the ultimate flexibility, 7.62 models accept both M1A/M14 and LR-308/SR-25 style magazines.

FEATURES:

- AR-magazine compatibility
- Two-tone spiral fluted bolt
- Threaded barrel, muzzlebrake/suppressor-ready, with 11 degree match crown
- Pillar-bedded stocks
- Patented LBA® user-adjustable trigger (3-7 lbs)
- Magpul® PMAG (except 5-round models, and 224 VLK)

PATRIOT SUPER BANTAM SCOPED COMBOS // 3-9x40mm Variable Scope, Fluted Barrels, Variable 12"-13" LOP

ITEM NUMBER (ARRANGED BY CALIBER)												
6.5 CREEDMOOR	243 WIN	7MM-08 REM	308 WIN	CAPACITY	BARREL	SCOPE BASES/SCOPE	TWIST*	OVERALL LENGTH**	LOP	BARREL FINISH	STOCK/FINISH	APPROX. WEIGHT
28027	27840	27853	27867	5+1	20" Fluted	Weaver-Style/3-9x40mm	*See Below	38.5***	12-13"	Matte Blue	Variable LOP – Synthetic (Black)	7.5 lbs
NEW 28062	NEW 28011	NEW 28063	NEW 28064	5+1	20" Fluted	Weaver-Style/3-9x40mm	*See Below	38.5***	12-13"	Matte Blue	Variable LOP – Synthetic (Muddy Girl Serenity)	7.5 lbs
NEW 28050	NEW 28065	NEW 28066	NEW 28067	5+1	20" Fluted	Weaver-Style/3-9x40mm	*See Below	38.5***	12-13"	Matte Blue	Variable LOP – Synthetic (True Timber Strata)	7.5 lbs

*Twist: 6.5 Creedmoor models have a 1:8" twist, 7mm-08 REM models have a twist of 1:9.5". All other calibers listed have 1:10" twist. **Overall Length: Super Bantam models are measured when the stock is at its minimum length of pull. LBA: Patriot Lightning Bolt-Action Trigger is user-adjustable from 2 to 7 lbs. LOP: Length of pull. Variable LOP: Length of pull is altered by use of included stock spacer. Muddy Girl® is a registered trademark owned by Sirphis, LLC. Krytek and Highlander are registered trademarks of Krytek Outdoor Group, Inc. All models include a free gun lock.

MVP PREDATOR

TYPE	ITEM #	CALIBER	CAPACITY	BARREL LENGTH & TYPE	SCOPE BASE	TWIST	OVERALL LENGTH	LOP	METAL FINISH	STOCK/FINISH	APPROX. WEIGHT
Centerfire Rifle	27785	6.5 Creedmoor	10+1	20" Med Bull/Fluted/Thrd	Weaver-Style	1:8"	40.5"	13.25"	Matte Blue	Laminate	7.5 lbs
Centerfire Rifle	27968	7.62mm NATO/308 WIN*	10+1	18.5" Med Bull/Fluted/Thrd	Weaver-Style	1:10"	38.5"	13.25"	Matte Blue	Laminate	7.5 lbs
Centerfire Rifle	27724	5.56mm NATO/223 REM	10+1	18.5" Med Bull/Fluted/Thrd	Weaver-Style	1:9"	37.5"	13.25"	Matte Blue	Laminate	7 lbs
NEW Centerfire Rifle	28034	224 Valkyrie	10+1	20" Med Bull/Fluted/Thrd	Weaver-Style	1:7"	40.5"	13.25"	Matte Blue	Laminate	7.5 lbs
Centerfire Rifle	27763	7.62mm NATO/308 WIN*	5+1	18.5" Med Bull/Fluted/Thrd	Weaver-Style	1:10"	38.5"	13.25"	Matte Blue	Laminate	7.5 lbs
Centerfire Rifle	27762	5.56mm NATO/223 REM	5+1	18.5" Med Bull/Fluted/Thrd	Weaver-Style	1:9"	37.5"	13.25"	Matte Blue	Laminate	7 lbs

LBA: MVP Lightning Bolt-Action Trigger is user-adjustable from 3 to 7 lbs. LOP: Length of pull. THRD: Threaded barrel. *Caliber: 7.62mm rifles can accept both M1A/M14 and LR-308/SR-25 style magazines. 3-9x40mm: Vortex Crossfire II scope with Dead-Hold BDC reticle. Vortex, Crossfire, and Dead-Hold are registered trademarks of Vortex Optics. PMAG: 10-round models only feature Magpul PMAG magazines. Magpul and PMAG are registered trademarks of Magpul Industries Corp. All models include a free gun lock. 🇨🇦 -Canada only.

MVP® LR Bolt-Action Rifles



NEW MVP LR - Thunder Ranch
7.62mm NATO/308 WIN // #28041



MVP LR
6.5 Creedmoor // #27784

FEATURES:

- AR-magazine compatibility
- Customized fit with an adjustable rubberized cheek rest
- Patented LBA® user-adjustable trigger (3-7 lbs)
- Magpul® PMAG (10-round)
- Threaded barrel, muzzlebrake/suppressor-ready, with 11 degree match crown

A popular rifle for use in the field or at the range, it's fair to assume that the "V" in MVP could stand for "versatile." This long-range rifle features an adjustable rubberized cheek rest to provide a custom fit and to ensure scope-to-eye alignment. Needless to say, it's ready for every season and every shooting discipline.



MVP LR stocks feature an integrated Mosscote® rubberized cheek rest, with vertical adjustment of up to 1.5" for a customized fit and to ensure scope-to-eye alignment.



MVP rifles accept and feed from standard AR-style magazines. For the ultimate flexibility, 7.62 models accept both M1A/M14 and LR-308/SR-25 style magazines.



All MVP rifles feature the patented LBA® Lightning Bolt-Action Trigger is user-adjustable from 3 to 7 pounds, and an oversized tactical bolt handle that provides a firm grip, even with gloved hands.



MVP® SCOUT / MVP® PATROL Bolt-Action Rifles



MVP Scout - Vortex Scoped Combo
7.62mm NATO/308 WIN // #27793



MVP Patrol
2 Calibers Available

FEATURES:

- AR-magazine compatibility
- Patented LBA® user-adjustable trigger (3-7 lbs)
- Pillar-bedded stock with Picatinny rail. MVP Scout comes with two side-mounted rails
- Oversized bolt handle
- Threaded barrel/removable A2-style muzzlebrake and protective thread cap
- MVP Scout features a front fiber-optic sight paired with a rail-mounted rear ghost ring. MVP Patrol features fiber-optic rifle sights.
- Magpul® PMAG (10-round)

The task at hand doesn't matter. These dependable, all-purpose rifles are perfect for the range or the ranch, as well as for tactical situations. They offer the convenience of AR-magazine compatibility with bolt-action accuracy and reliability.

MVP SCOUT

TYPE	ITEM #	CALIBER	CAPACITY	BARREL LENGTH & TYPE	SCOPE BASE	TWIST	OVERALL LENGTH	LOP	SCOPE	SIGHTS	METAL FINISH	STOCK/FINISH	APPROX. WEIGHT
------	--------	---------	----------	----------------------	------------	-------	----------------	-----	-------	--------	--------------	--------------	----------------

MVP SCOUT RIFLE

Centerfire Rifle	27778	7.62mm NATO/308 WIN*	10+1	16.25" Med Bull/Thrd+A2	Ext. Top/2 Side	1:10"	37.5"	13.75"	—	GR Rear/FO Front	Matte Blue	Synthetic (Black)	6.75 lbs
------------------	-------	----------------------	------	-------------------------	-----------------	-------	-------	--------	---	------------------	------------	-------------------	----------

MVP SCOUT - VORTEX SCOPED COMBO // 2-7x32mm Crossfire II Scout Scope With V-Plex Reticle and Extended Eye Relief

Vortex Combo	27793	7.62mm NATO/308 WIN*	10+1	16.25" Med Bull/Thrd+A2	Ext. Top/2 Side	1:10"	37.5"	13.75"	2-7x32mm	GR Rear/FO Front	Matte Blue	Synthetic (Black)	8.25 lbs
--------------	-------	----------------------	------	-------------------------	-----------------	-------	-------	--------	----------	------------------	------------	-------------------	----------

*Caliber: 7.62mm rifles can accept both M1A/M14 and LR-308/SR-25 style magazines. LBA: MVP Lightning Bolt-Action Trigger is user-adjustable from 3 to 7 lbs. Scope: 2-7x32mm Vortex Crossfire II Scout Scope with extended eye relief. Vortex rings and lens caps included. GR Rear/FO Front: Rail-mounted rear ghost ring and elevated front fiber-optic sights. LOP: Length of pull. Thrd+A2: Threaded barrel with A2-style flash suppressor. Thread cap is included. Ext. Top/2 Side: 11" receiver/barrel-mounted Picatinny rail, and side-mounted short rails. PMAG: 10-round models only feature Magpul PMAG magazines. Magpul and PMAG are registered trademarks of Magpul Industries Corp. All models include a free gun lock.

MVP LR // Stock Has Integrated Rubberized Mosscote Finish Cheek Rest

TYPE	ITEM #	CALIBER	CAPACITY	BARREL LENGTH & TYPE	SCOPE BASE	TWIST	OVERALL LENGTH	LOP	METAL FINISH	STOCK/FINISH	APPROX. WEIGHT
MVP LR											
Centerfire Rifle	27784	6.5 Creedmoor	10+1	22" Med Bull/Fluted/Thrd	Pic. Rail	1:8"	41.5"	13.25"	Matte Blue	Benchrest/Textured (OD Green) - Adj. Comb	8 lbs
Centerfire Rifle	27697	7.62mm NATO/308 WIN*	10+1	20" Med Bull/Fluted/Thrd	Pic. Rail	1:10"	39.5"	13.25"	Matte Blue	Benchrest/Textured (OD Green) - Adj. Comb	8 lbs
NEW Centerfire Rifle	28035	224 Valkyrie	10+1	22" Med Bull/Fluted/Thrd	Pic. Rail	1:7"	41"	13.25"	Matte Blue	Benchrest/Textured (OD Green) - Adj. Comb	8 lbs
Centerfire Rifle	27694	7.62mm NATO/308 WIN*	5+1	20" Med Bull/Fluted/Thrd	Pic. Rail	1:10"	39.5"	13.25"	Matte Blue	Benchrest/Textured (OD Green) - Adj. Comb	8 lbs

MVP LR - THUNDER RANCH

NEW Centerfire Rifle	28040	5.56mm NATO/223 REM	10+1	20" Med Bull/Fluted/Thrd	Pic. Rail	1:7"	39"	13.25"	Matte Blue	KUJU Camo - Adj. Comb	8 lbs
NEW Centerfire Rifle	28041	7.62mm NATO/308 WIN*	10+1	20" Med Bull/Fluted/Thrd	Pic. Rail	1:10"	39.5"	13.25"	Matte Blue	KUJU Camo - Adj. Comb	8 lbs

Caliber: 7.62mm rifles can accept both M1A/M14 and LR-308/SR-25 style magazines. LBA: MVP Lightning Bolt Action Trigger is user-adjustable from 3 to 7 lbs. LOP: Length of pull. Thrd: Threaded barrel with thread cap included. Pic. Rail: Receiver-mounted Picatinny rail. Magpul, MOE, and PMAG are registered trademarks of Magpul Industries Corp. All models include a free gun lock. 🇨🇦 - Canada only.

MVP PATROL

TYPE	ITEM #	CALIBER	CAPACITY	BARREL & LENGTH	SCOPE BASE/RAIL	TWIST	OVERALL LENGTH	LOP	SIGHTS	BARREL FINISH	STOCK	APPROX. WEIGHT
Centerfire Rifle	27716	5.56mm NATO/223 REM	10+1	16.25" Med Bull/Thrd+A2	Pic. Rail	1:9	36.5"	13.25"	FO Rifle	Matte Blue	Synthetic (Black)	7 lbs
Centerfire Rifle	27738	7.62mm NATO/308 WIN*	10+1	16.25" Med Bull/Thrd+A2	Pic. Rail	1:10	37.5"	13.75"	FO Rifle	Matte Blue	Synthetic (Black)	7.5 lbs
Centerfire Rifle	27766	5.56mm NATO/223 REM	5+1	16.25" Med Bull/Thrd+A2	Pic. Rail	1:9	36.5"	13.25"	FO Rifle	Matte Blue	Synthetic (Black)	7 lbs
Centerfire Rifle	27767	7.62mm NATO/308 WIN*	5+1	16.25" Med Bull/Thrd+A2	Pic. Rail	1:10	37.5"	13.75"	FO Rifle	Matte Blue	Synthetic (Black)	7.5 lbs

*Caliber: 7.62mm rifles can accept both M1A/M14 and LR-308/SR-25 style magazines. LBA: MVP Lightning Bolt-Action Trigger is user-adjustable from 3 to 7 lbs. Scope: 2-7x32mm variable scope. Scoped models also come with neoprene comb raising kit with foam inserts. FO Rifle: Front fiber-optic and rear adjustable rifle sights. Thrd: Threaded barrel. Thread cap is included. Thrd+A2: Threaded barrel with A2-style flash suppressor. Thread cap is included. Pic. Rail: Receiver-mounted Picatinny rail. PMAG: 10-round models only feature Magpul PMAG magazines. Magpul and PMAG are registered trademarks of Magpul Industries Corp. All models include a free gun lock. 🇨🇦 - Canada only.



Patented LBA® Lightning Bolt-Action Trigger is user-adjustable from 3 to 7 pounds. An oversized trigger guard is perfect for use with gloved hands.



Medium bull barrels are free-floated for superior accuracy, and threaded for the addition of a suppressor or muzzlebrake. Multiple chassis mounting holes support swivel or rail accessory options.

MVP LC
6.5 Creedmoor // #28018

MVP LC
5.56mm NATO/223 REM // #28016

MVP LC
7.62mm NATO/308 WIN // #28017

AR-magazine compatibility. Bolt-action reliability and accuracy. It should come as no surprise that the MVP LC makes for the perfect multipurpose rifle. So whether you find yourself face to face with a trophy whitetail, ridding your homestead of varmints, or simply target shooting, the MVP LC will get the job done.

FEATURES:

- AR-magazine compatibility
- Patented LBA® user-adjustable trigger (3-7 lbs)
- MDT LSS light chassis aluminum stock
- Oversized bolt handle
- Top-mounted Picatinny rail
- Magpul® MOE+ grip and 10-round PMAG
- MIL-SPEC Magpul® CTR adjustable stock with A-frame profile reduces snagging, and provides cheek rest height adjustment and a 11.25" to 14.5" length-of-pull range using the integrated lever

MVP LC											
TYPE	ITEM #	CALIBER	CAP	BARREL LENGTH & TYPE	SCOPE BASE	TWIST	OVERALL LENGTH	LOP	METAL FINISH	CHASSIS & STOCK	APPROX. WEIGHT
Centerfire Rifle	28018	6.5 Creedmoor	10+1	20" Med Bull/Fluted/Thrd	Pic. Rail	1:8"	37.75***	11.25-14.5"	Matte Blue	Alum. Chassis (Tan), Ctr 6-Pos Adj. Stock	7.75 lbs
Centerfire Rifle	28017	7.62mm NATO/308 WIN*	10+1	18.5" Med Bull/Fluted/Thrd	Pic. Rail	1:10"	35.75***	11.25-14.5"	Matte Blue	Alum. Chassis (Tan), Ctr 6-Pos Adj. Stock	7.62 lbs
Centerfire Rifle	28016	5.56mm NATO/223 REM	10+1	16.25" Med Bull/Fluted/Thrd	Pic. Rail	1:7"	33.5***	11.25-14.5"	Matte Blue	Alum. Chassis (Tan), Ctr 6-Pos Adj. Stock	7.5 lbs

*Caliber: MVP LC 7.62mm rifles only accept LR-308/SR-25 style magazines. **Overall Length: Measured when stock is at its minimum length of pull. LBA: MVP Lightning Bolt-Action Trigger is user-adjustable from 3 to 7 lbs. LOP: Length of pull. Thrd: Threaded barrel. Thread cap is included. Pic. Rail: Receiver-mounted Picatinny rail. Magpul and PMAG are registered trademarks of Magpul Industries Corp. All models include a free gun lock.



MVP Precision
7.62mm NATO/308 WIN // #27961

When engineering and designing our new long-range tack-driver, one word was our true north: precision. Combining the capacity and flexibility of America's most popular magazines with the accuracy and reliability of a bolt-action, the MVP Precision has become a go-to firearm for competition and target shooters.

FEATURES:

- Mossberg chassis design with stock takedown capability
- AR-magazine compatibility [7.62mm: both AR-10 style (LR308/SR25) and M1A/M14 magazines]
- LUTH-AR MBA-3 adjustable (LOP/cast/comb height) stock
- 24" or 20" threaded barrel lengths/protective cap
- Patented LBA® user-adjustable trigger (3-7 lbs)
- Scalloped bolt handle
- Anodized and matte blue metal finishes
- 20 MOA top-mounted Picatinny rail
- Magpul® MOE+ grip
- Magpul® PMAG (10-round models)



All models feature the patented LBA® Lightning Bolt-Action Trigger is user-adjustable from 3 to 7 pounds. The oversized trigger guard is perfect for use with gloved hands.



The LUTH-AR MBA-3 stock allows multiple length-of-pull and comb height adjustments, without tools. The butt plate assembly adjusts on 3 axes for a comfortable fit.



Distinctive features include 20 MOA top Picatinny rail; scalloped bolt handle for more clearance when used by larger or gloved hands, and an embossed Mossberg "M" on the rifle's receiver.



For improved accuracy, barrels are free-floated in Mossberg's slim-profile forearm/hand guard compatible with the M-LOK® modular mounting system (M-LOK® accessories not included).



MVP PRECISION

TYPE	ITEM #	CALIBER	CAPACITY	BARREL LENGTH & TYPE	SCOPE BASE	TWIST	OVERALL LENGTH	LOP	RECEIVER/BARREL FINISHES	STOCK/GRIP	APPROX. WEIGHT
Centerfire Rifle	27962	6.5 Creedmoor	10+1	24" Med Bull/Thrd	Pic. Rail	1:8"	43.25***	12.5-16.5"	Anodized/Matte Blue	LUTH-AR MBA-3 Adj. Stock/MOE+ Grip	10 lbs
Centerfire Rifle	27961	7.62mm NATO/308 WIN*	10+1	20" Med Bull/Thrd	Pic. Rail	1:10"	39.25***	12.5-16.5"	Anodized/Matte Blue	LUTH-AR MBA-3 Adj. Stock/MOE+ Grip	9.2 lbs
NEW Centerfire Rifle	28025	224 Valkyrie	10+1	20" Med Bull/Thrd	Pic. Rail	1:7"	39.25***	12.5-16.5"	Anodized/Matte Blue	LUTH-AR MBA-3 Adj. Stock/MOE+ Grip	9.2 lbs
Centerfire Rifle	28031	6.5 Creedmoor	5+1	24" Med Bull/Thrd	Pic. Rail	1:8"	43.25***	12.5-16.5"	Anodized/Matte Blue	LUTH-AR MBA-3 Adj. Stock/MOE+ Grip	10 lbs
Centerfire Rifle	28030	7.62mm NATO/308 WIN*	5+1	20" Med Bull/Thrd	Pic. Rail	1:10"	39.25***	12.5-16.5"	Anodized/Matte Blue	LUTH-AR MBA-3 Adj. Stock/MOE+ Grip	9.2 lbs

*Caliber: 7.62mm rifles can accept both M1A/M14 and LR-308/SR-25 style magazines. **Overall Length: Measured when stock is at its minimum length of pull. LBA: MVP Lightning Bolt-Action Trigger is user-adjustable from 3 to 7 lbs. LOP: Length of pull. THRD: Threaded barrel with thread cap included. Pic. Rail: Receiver-mounted Picatinny rail. LUTH-AR and MBA are registered trademarks of LUTH-AR, LLC. Magpul, MOE, M-LOK, and PMAG are registered trademarks of Magpul Industries Corp. All models include a free gun lock. 🇨🇦 -Canada only.

802 PLINKSTER™ Bolt-Action Rimfire Rifles



817™ Bolt-Action Rimfire Rifles



NEW 802 Plinkster - Synthetic
22LR // #38230



802 Plinkster - Wood
22LR // #38218



NEW 802 Plinkster - Scoped Combo
22LR // #38232



NEW 817 Bolt-Action - Synthetic
17HMR // #38191



817 Bolt-Action - Wood
17HMR // #38180

With our 802 Plinkster, a day of plinking, small game hunting, or target shooting has never been more fun. Available in multiple models, these bolt-action, 22LR rifles offer low recoil and confidence-building accuracy — making them the perfect choice for first-time shooters and hunters.

FEATURES:

- 22LR
- Blued 18" barrels
- 10-round magazine
- Dovetail optics mount
- Sights and optional 4X scoped combo



802 Plinkster and 817 are all offered with the classic look of wood stocks paired with blued metal finish.

You feel that? It's fun and excitement coursing through your veins as you take hold of our 817 for a day of plinking, target shooting, and small game hunting. This bolt-action 17HMR rifle offers low recoil and accuracy that'll keep you shooting for hours on end. The 817 features Weaver-style scope bases.

FEATURES:

- 17HMR
- Blued 21" barrel
- 5-round magazine
- Synthetic or wood stocks
- Weaver-style scope bases



For optics mounting ease, 817 models have Weaver-style bases.



New synthetic stock features a stippled grip and forend; and has a thick, vented rubber recoil pad.



MOSSBERG INTERNATIONAL 802 PLINKSTER

TYPE	ITEM #	CALIBER	CAPACITY	BARREL	TWIST	SIGHTS	OVERALL LENGTH	LOP	METAL FINISH	STOCK & FINISH	APPROX. WEIGHT
802 PLINKSTER – 22LR // 10-Round Magazine											
NEW Black Stock	38230	22LR	10+1	18"	1:16"	Adj. Rifle	37"	14.25"	Blue	Synthetic (Black)	4 lbs
Wood Stock	38218	22LR	10+1	18"	1:16"	Adj. Rifle	37"	14.25"	Blue	Classic Wood	4.5 lbs
802 PLINKSTER SCOPED COMBO – 22LR // 4x Scope, 10-Round Magazine											
NEW Scoped Combo - Black Stock	38232	22LR	10+1	18"	1:16"	Adj. Rifle + 4x Scope	37"	14.25"	Blue	Synthetic (Black)	4.5 lbs

LOP: Length of pull. Adj. Rifle: Rifle sights adjust for windage and elevation. All models include a free gun lock.

MOSSBERG INTERNATIONAL 817

TYPE	ITEM #	CALIBER	CAPACITY	BARREL	TWIST	SCOPE BASES	OVERALL LENGTH	LOP	METAL FINISH	STOCK	APPROX. WEIGHT
NEW Black Stock	38191	17 HMR	5+1	21"	1:9"	Weaver-Style	40"	14.25"	Blue	Synthetic (Black)	4.5 lbs
Wood Stock	38180	17 HMR	5+1	21"	1:9"	Weaver-Style	40"	14.25"	Blue	Classic Wood	4.75 lbs

LOP: Length of pull. Adj. Rifle: Rifle sights adjust for windage and elevation. All models include a free gun lock.



464 - Centerfire/Walnut Pistol Grip
30-30 WIN // #41020

We reinvented the classic Western-style “cowboy gun” by outfitting the 464 series with modern touches and innovations. This lever-action rifle is not only a classic, it’s fun to shoot. The 30-30 caliber is a perfect all-around rifle for whitetail, predator, and small game hunting. It’s equally suited for recreation and sport shooting.

464 CLASSIC WESTERN-STYLE FEATURES:

- 30-30 WIN or 22LR
- Blued metal finish
- Straight grip or pistol grip stocks
- Pistol grip stocks are walnut and offer diamond-pattern fine-line checkering on the grip and forend

464 SPX TACTICAL FEATURES:

- 30-30 WIN or 22LR
- Matte blue metal finish
- 6-position adjustable stocks with interchangeable FLEX recoil pad
- Tri-rail forend



464 - Centerfire/Straight Grip
30-30 WIN // #41010



464 - Rimfire/Straight Grip
22LR // #43000



464 SPX - Centerfire
30-30 WIN // #41026



464 SPX - Rimfire
22LR // #43027



Handsome walnut pistol grip stock includes diamond-pattern fine-line checkering on the stock and forend, providing a firm grip in the field.



For shooting comfort, the 464 SPX adjustable stock provides 3.75 inches of length-of-pull adjustment and has an interchangeable FLEX recoil pad.



464 SPX models come with fore-mounted Picatinny rails on both calibers, for quick and easy mounting of tactical lights.

464												
TYPE	ITEM #	CALIBER	CAPACITY	BARREL LENGTH	RECEIVER	SIGHTS	TWIST	OVERALL LENGTH	LOP	METAL FINISH	STOCK/FINISH	APPROX. WEIGHT
464 CENTERFIRE – PISTOL GRIP												
Centerfire – Pistol Grip	41020	30-30 WIN	6+1	20"	Drilled/Tapped	Bead/Adj. Rear	1:10"	38.5"	13.87"	Blue	Walnut (Pistol Grip)	6.75 lbs
464 CENTERFIRE – STRAIGHT GRIP												
Centerfire – Straight Grip	41010	30-30 WIN	6+1	20"	Drilled/Tapped	Bead/Adj. Rear	1:10"	38.5"	13.87"	Blue	Wood (Straight Grip)	6.75 lbs
464 RIMFIRE – STRAIGHT GRIP												
Rimfire – Straight Grip	43000	22LR	13+1	18"	Dovetail	Rifle Sight	1:16"	35.75"	13.87"	Blue	Wood (Straight Grip)	5.5 lbs
464 SPX												
TYPE	ITEM #	CALIBER	CAPACITY	BARREL LENGTH	RECEIVER	SIGHTS	TWIST	OVERALL LENGTH	LOP	METAL FINISH	STOCK/FINISH	APPROX. WEIGHT
464 SPX – CENTERFIRE												
Centerfire – SPX	41026	30-30 WIN	6+1	16.25"+Flash Supp	Drilled/Tapped	FO 3-Dot	1:10"	34.25**	11.25–15"	Matte Blue	6-Pos. Adj./Synth. (Black) Tri-Rail Forend	7 lbs
464 SPX – RIMFIRE												
Rimfire – SPX	43027	22LR	13+1	18"+Muzzlebrake	Dovetail	Rifle Sight	1:16"	35.75**	11.25–15"	Matte Blue	6-Pos. Adj./Synth. (Black) Tri-Rail Forend/Rail Covers	6 lbs

*Overall Length: Measured when stock is set at its minimum length of pull. LOP: Length of pull. Bead/Adj. Rear: Bead front sight and adjustable rear sight. Adj. FO: Adjustable fiber-optic sight. Drilled/Tapped: Receiver is drilled and tapped for Weaver #403 bases. Dovetail: Receiver is grooved to accept 3/8" scope mounts. Flash Supp: Barrel length measurement does not include installed A2-style flash suppressor. 6-Pos Adj.: 6-position adjustable length-of-pull stock is adjusted using the integrated lever. Stock uses FLEX recoil pad, compatible with other FLEX pads. All models include a free gun lock.



RIFLES

MOSSBERG

SEMI-AUTOMATIC



MMR™ CARBINE Semiautomatic Rifle



MMR Carbine
5.56mm NATO/223 REM // #65074

Great rifle. Great price. Great AR-15 performance. Need we say more? The MMR Carbine has all the modern sporting rifle essentials that today's modern shooter wants and demands. Highly customizable to your specific AR-15 shooting needs, the MMR Carbine features 6-position adjustable LOP stock or fixed-length stock.



FEATURES:

- 6-position adjustable LOP stock or fixed-length stock
- 16" free-floating AISI 4140 alloy steel barrel
- Direct-impingement gas system
- 13" slim-profile forend/hand guard with M-LOK®
- Magpul® MOE+® grip/trigger guard
- Phosphate and hard-coat anodized metal finishes



Flat-top full-length rail holds adjustable front and rear target sights, which are removable for alternate customization with accessories or optics.



The MMR Carbine's 13" slim-profile forend/hand guard uses the M-LOK modular mounting system; the full-length top rail accommodates a wide variety of accessories (sights and accessories shown are not included).

M-LOK

MMR CARBINE											
TYPE	ITEM #	CALIBER	CAPACITY	BARREL LENGTH	BASE/RAIL & SIGHT	TWIST	OVERALL LENGTH*	LOP	METAL FINISHES	STOCK/GRIP/FINISH	APPROX. WEIGHT
Semiauto Rifle	65074	5.56mm NATO/223 REM	30+1	16"+ A2 Flash Suppressor	Top Rail/Rail-Mounted Adjustable Sights	1:8"	33**	11-14.25"	Phosphate and MIL-SPEC Hard-Coat Anodized	6-Pos. Adjustable Stock MOE+ Grip/Trigger Grd (Black Syn.)	7 lbs

*Overall Length: Adjustable stock models are measured when stock is at its minimum length of pull. LOP: Length of pull. Rail-mounted adjustable: Picatinny mounted sights. Front sight is adjustable for elevation, rear for windage and elevation. Metal finishes: Components have a combination of phosphate and MIL-SPEC hard-coat anodized finishes. 6-Pos: 6-position adjustable stock. Length of pull is adjusted using integrated lever. M-LOK: Forend is compatible with M-LOK mounted accessories. M-LOK and MOE are trademarks of Magpul Industries Corp. All models include a free gun lock. Not all products are available in all states and jurisdictions. Check your state and local regulations.

MMR™ PRO Semiautomatic Rifles



MMR Pro
224 Valkyrie // #65082

The MMR Pro delivers 3-gun features for shooters seeking to gain that competitive edge. A serious rifle for serious competitors, it offers superior accuracy, unequalled consistency, and a phenomenal Jerry Miculek designed trigger that's adjustable for overtravel and trigger pull — delivering a crisp and creep-free break, shot after shot.

FEATURES:

- JM Pro Drop-in Adjustable Match Trigger (3-6 lbs pull)
- Rifle-length direct-impingement gas system
- 6-position stock has 3.25" length-of-pull adjustment range and interchangeable FLEX pad
- 15" slim-profile forend with M-LOK®
- Phosphate and hard-coat anodized metal finishes
- Forward assist and ejection port dust cover
- Magpul® MOE+® grip/trigger guard
- 30-round Magpul® PMAG (except on 224 VLK)



The MMR Pro's 15" slim-profile forend/hand guard uses the M-LOK modular mounting system; the full-length top rail accommodates a wide variety of accessories. (Sights and accessories shown are not included.)



With the AXTS Raptor™ ambidextrous charging handle, the motion is fluid and fast from either the strong or support side.



The 18" AISI 416 stainless-steel barrel is free-floated for superior accuracy and comes with a SilencerCo 3-port muzzlebrake with ASR mount.



Standard on MMR Tactical and MMR Pro models – the JM Pro Drop-in Adjustable Match Trigger was engineered by Mossberg to meet the demanding specifications of legendary 3-Gun World Champion Jerry Miculek. Engineered for consistency shot after shot, the trigger offers a crisp, creep-free break and is user-adjustable for overtravel and trigger pull (3 to 6 pounds).

MMR PRO											
TYPE	ITEM #	CALIBER	CAPACITY	BARREL LENGTH	BASE/RAIL & SIGHT	TWIST	OVERALL LENGTH*	LOP	METAL FINISHES	STOCK/GRIP/FINISH	APPROX. WEIGHT
Semiauto Rifle – Competition	65080	5.56mm NATO/223 REM	30+1	18" Stainless Steel +SilencerCo Mzbrk/ASR	Full-Length Top Rail	1:8"	35.75**	11-14.25"	Phosphate and MIL-SPEC Hard-Coat Anodized	6-Pos. Adj. Stock w/FLEX Pad MOE+ Grip/Trigger Grd (Black Syn.)	7 lbs
NEW Semiauto Rifle – Competition	65082	224 Valkyrie	28+1	18" Stainless Steel +SilencerCo Mzbrk/ASR	Full-Length Top Rail	1:7"	35.75**	11-14.25"	Phosphate and MIL-SPEC Hard-Coat Anodized	6-Pos. Adj. Stock w/FLEX Pad MOE+ Grip/Trigger Grd (Black Syn.)	7 lbs

*Overall Length: Adjustable stock models are measured when stock is at its minimum length of pull. LOP: Length of pull. Metal finishes: Components have a combination of phosphate and MIL-SPEC hard-coat anodized finishes. 6-Pos: 6-position adjustable stock. Length of pull is adjusted using integrated lever. Stock uses FLEX recoil pad, compatible with other FLEX pads. M-LOK: Forend is compatible with M-LOK mounted accessories. M-LOK and MOE are trademarks of Magpul Industries Corp. All models include a free gun lock. Not all products are available in all states and jurisdictions. Check your state and local regulations.



MMR Tactical – Vortex StrikeFire II
5.56mm NATO / 223 REM // #65035



MMR Tactical - Optics Ready
5.56mm NATO / 223 REM // #65081

Accurate. Ergonomic. Versatile. That's the Mossberg MMR Tactical rifle. It offers the perfect balance of AR-15 features for everything from home security and hunting to competition and recreational shooting. All MMR Tactical models feature our JM Pro Drop-in Adjustable Match Trigger designed to meet the demanding specifications of world champion shooter Jerry Miculek.



Premium Vortex StrikeFire II Red/Green Dot
The Vortex StrikeFire II Red/Green Dot 30mm sight provides split-second target acquisition and maximum field of view with both eyes open. Sleek rear-facing controls provide easy adjustment of 10-dot intensity levels. Waterproof and fogproof.

FEATURES:

- JM Pro Drop-in Adjustable Match Trigger
- 13" slim-profile forend with M-LOK®
- Direct-impingement gas system
- 6-position stock with FLEX pad for length-of-pull flexibility
- Phosphate and hard-coat anodized metal finishes
- Magpul® MOE+® grip/trigger guard
- 30-round Magpul® PMAG



Jerry Miculek: 3-Gun World Champion



Standard on MMR Tactical and MMR Pro models, the JM Pro Drop-in Adjustable Match Trigger was engineered by Mossberg to meet the demanding specifications of legendary 3-Gun World Champion Jerry Miculek. Engineered for consistency shot after shot, the trigger offers a crisp, creep-free break and is user-adjustable for overtravel and trigger pull (3 to 6 pounds).



The 16" A2-style flash suppressor is mag-phosphate finished and free-floated for superior accuracy, and comes with a removable A2-style flash suppressor.



6-position stock provides 3.25" of LOP adjustment by use of integrated lever. The FLEX recoil pad is interchangeable with other FLEX pad thicknesses for additional LOP flexibility.

MMR TACTICAL											
TYPE	ITEM #	CALIBER	CAPACITY	BARREL LENGTH	BASE/RAIL & SIGHT	TWIST	OVERALL LENGTH*	LOP	METAL FINISHES	STOCK/GRIP/FINISH	APPROX. WEIGHT
MMR TACTICAL – OPTICS-READY											
Semiauto Rifle	65081	5.56mm NATO/ 223 REM	30+1	16"+ A2 Flash Suppressor	Full-Length Top Rail	1:8"	33**	11–14.25"	Phosphate & MIL-SPEC Hard-Coat Anodized	6-Pos. Adj. Stock w/FLEX Pad MOE+ Grip/Trigger Grd (Black Syn.)	7 lbs
Semiauto Rifle	65083	5.56mm NATO/ 223 REM	5+1	16"+ A2 Flash Suppressor	Full-Length Top Rail	1:8"	33**	11–14.25"	Phosphate & MIL-SPEC Hard-Coat Anodized	6-Pos. Adj. Stock w/FLEX Pad MOE+ Grip/Trigger Grd (Black Syn.)	7 lbs
MMR TACTICAL – VORTEX RED/GREEN DOT COMBO											
Vortex Combo	65035	5.56mm NATO/ 223 REM	30+1	16"+ A2 Flash Suppressor	Full-Length Top Rail and StrikeFire II Sight	1:8"	33**	11–14.25"	Phosphate & MIL-SPEC Hard-Coat Anodized	6-Pos. Adj. Stock w/FLEX Pad MOE+ Grip/Trigger Grd (Black Syn.)	7 lbs
Vortex Combo	65084	5.56mm NATO/ 223 REM	5+1	16"+ A2 Flash Suppressor	Full-Length Top Rail and StrikeFire II Sight	1:8"	33**	11–14.25"	Phosphate & MIL-SPEC Hard-Coat Anodized	6-Pos. Adj. Stock w/FLEX Pad MOE+ Grip/Trigger Grd (Black Syn.)	7 lbs

*Overall Length: Adjustable stock models are measured when stock is at its minimum length of pull. LOP: Length of pull. Metal finishes: Components have a combination of phosphate and MIL-SPEC hard-coat anodized finishes. 6-Pos: 6-position adjustable stock. Length of pull is adjusted using integrated lever. Stock uses FLEX recoil pad, compatible with other FLEX pads (sold separately, see page 100). M-LOK: Forend is compatible with M-LOK mounted accessories. M-LOK and MOE are trademarks of Magpul Industries Corp. Vortex and StrikeFire are registered trademarks of Vortex Optics. Not all products are available in all states and jurisdictions. Check your state and local regulations. 🇨🇦: Canada only.



715T
22LR // #37209



715T - Muddy Girl® Serenity™
22LR // #37244



715T - Red Dot Combo
22LR // #37234

It has the look and feel of an AR in a lightweight, fun-to-shoot 22LR rimfire. Easy to handle, our popular 715T is not only a great field gun for small game hunting, but it makes for the perfect all-around utility long gun for controlling unwanted varmints, target shooting, and training.

FEATURES:

- 11" to 14.25" length-of-pull range ensuring a proper, more comfortable fit
- Vented quad-rail forend
- Red Dot Combos feature a 1x30mm sight with red/green illumination
- 95' field of view at 100 yards and windage and elevation adjustability
- 25-round models come with an accessory magazine loader



Specially designed 10-round 715T magazines (#37205 and #37232) have the same visual profile as higher-capacity 25-round models.



The 715T adjustable stock has a pistol grip and length-of-pull range of 11"-14.25" adjusted by use of the integrated adjustment lever and has an interchangeable FLEX recoil pad.



All 715T rifles feature a vented quad-rail forend, for use with a multitude of available accessories like lights, sights, lasers, and forend grips.



1x30mm Red Dot has red/green illumination, is adjustable for windage and elevation, has convenient flip-up lens caps, and conveniently mounts to the flat-top rail.



25-round models come with a convenient accessory magazine loader for faster, easier magazine loading (magazines are also sold as accessories, see page 105).

MOSSBERG INTERNATIONAL 715T

TYPE	ITEM #	CALIBER	MAGAZINE	CAPACITY	BARREL	SIGHTS/SCOPE BASE	TWIST	OVERALL LENGTH*	LOP	STOCK & FINISH	BARREL FINISH	APPROX. WEIGHT
715T FLAT-TOP												
Adj. Stock - Camo	37244	22LR	25-Rd. & Loader	25+1	16.25"+A2	Rail-Mnt Adj. Front/Rear	1:16"	33"	11"-14.25"	Adj. LOP Tactical - Synth. (Muddy Girl Serenity)	Blue	5.5 lbs
Adj. Stock	37209	22LR	25-Rd. & Loader	25+1	16.25"+A2	Rail-Mnt Adj. Front/Rear	1:16"	33"	11"-14.25"	Adj. LOP Tactical - Synthetic (Black)	Blue	5.5 lbs
Adj. Stock	37205	22LR	10-Rd. Full-Profile	10+1	16.25"+A2	Rail-Mnt Adj. Front/Rear	1:16"	33"	11"-14.25"	Adj. LOP Tactical - Synthetic (Black)	Blue	5.5 lbs
715T FLAT-TOP - RED DOT COMBOS												
Adj. Stock	37234	22LR	25-Rd. & Loader	25+1	16.25"+A2	Rail-Mnt 30mm Red Dot	1:16"	33"	11"-14.25"	Adj. LOP Tactical - Synthetic (Black)	Blue	5.75 lbs
Adj. Stock	37232	22LR	10-Rd. Full-Profile	10+1	16.25"+A2	Rail-Mnt 30mm Red Dot	1:16"	33"	11"-14.25"	Adj. LOP Tactical - Synthetic (Black)	Blue	5.75 lbs

*Overall Length: Length is measured with stock at minimum length of pull. Full-profile: 10-round magazine has shape and appearance of 25-round magazine. LOP: Length of pull. Adj. LOP Stock: 6-position stock with variable length of pull. LOP is adjusted using the integrated lever. Stock uses FLEX recoil pad, compatible with other FLEX pads (sold separately). Loader: Includes accessory magazine loader. Adj. Front/Rear: Picatinny rail mounted front and rear sights are removable and adjustable. 30mm Red Dot: Picatinny mounted 1x30mm red dot. +A2: A2-style muzzlebrake. Muddy Girl: Muddy Girl® is a registered trademark owned by Sirphis, LLC. All models include a free gun lock. Not all products are available in all states and jurisdictions. Check your state and local regulations.



BLAZE - Muddy Girl® Serenity™
22LR // #37320



BLAZE - Bantam Youth
22LR // #37313



BLAZE - Green Dot Combo
22LR // #37316

If you're looking for a classic lightweight rimfire, the Blaze series is always right on target. Lightweight, affordable, and always fun to shoot, the Blaze is perfect for seasoned shooters or beginners who want a great all-around rifle for plinking, target shooting, and small game hunting.

FEATURES:

- 16.5" barrels with blued finish
- 10- or 25-round
- Adjustable rifle sights or optics-ready barrel-mounted rail
- Offered in a youth 12" length-of-pull model
- Dead Ringer™ Green Dot Combo
- Ambidextrous thumb safety

BLAZE

TYPE	ITEM #	CALIBER	CAPACITY	BARREL	TWIST	SIGHTS/SCOPE	OVERALL LENGTH	LOP	FINISH	STOCK	APPROX. WEIGHT
BLAZE 22LR											
Muddy Girl Serenity Camo – 10-Round	37320	22LR	10+1	16.5"	1:16"	Adj. Rifle	35.75"	13.5"	Blue	Synthetic (Muddy Girl Serenity)	3.66 lbs
Black Synthetic – 25-Round	37314	22LR	25+1	16.5"	1:16"	Adj. Rifle	35.75"	13.5"	Blue	Synthetic (Black)	3.66 lbs
Black Synthetic – 10-Round	37312	22LR	10+1	16.5"	1:16"	Adj. Rifle	35.75"	13.5"	Blue	Synthetic (Black)	3.66 lbs
Youth/Bantam Black Synthetic – 10-Round	37313	22LR	10+1	16.5"	1:16"	Adj. Rifle	34.25"	12"	Blue	Synthetic – Reduced LOP (Black)	3.66 lbs
BLAZE 22LR – GREEN DOT COMBO											
Black Synthetic – 25-Round (Railed)	37316	22LR	25+1	16.5"	1:16"	Dead Ringer Green Dot/Rail	35.75"	13.5"	Blue	Synthetic (Black)	3.66 lbs

Adj. Rifle: Rear sight adjusts for windage and elevation. Dead Ringer: Holographic green dot sight is rail-mounted and has four reticle configurations. LOP: Length of pull. Muddy Girl: Muddy Girl® is a registered trademark owned by Sirphis, LLC. All models include a free gun lock. Not all products are available in all states and jurisdictions. Check your state and local regulations.



BLAZE-47 - 25-Round
22LR // #37255



BLAZE-47 - 10-Round
22LR // #37254



Lightweight and fun to shoot, these Blaze 22LR rifles boast the dynamic look of an AK-47. These semiautomatic rifles are a great choice for small game hunting and target practice.

FEATURES:

- 16.5" barrels with blued finish
- 10- or 25-round
- AK-styled wood stock, grip and forend
- Fiber-optic adjustable rear/raised front sights
- Ambidextrous thumb safety

BLAZE-47

TYPE	ITEM #	CALIBER	CAPACITY	BARREL	TWIST	SIGHTS/SCOPE	OVERALL LENGTH	LOP	FINISH	STOCK	APPROX. WEIGHT
Wood Stock – 25-Round	37255	22LR	25+1	16.5"	1:16"	Adj. FO Rear/Raised Front Rifle	35.75"	13.5"	Blue	Wood – Fixed LOP	4.75 lbs
Wood Stock – 10-Round	37254	22LR	10+1	16.5"	1:16"	Adj. FO Rear/Raised Front Rifle	35.75"	13.5"	Blue	Wood – Fixed LOP	4.75 lbs

*Overall Length: Measured when stock is set at its minimum length of pull. Adj. FO Rear/Raised Front Rifle: Rear fiber-optic sight adjusts for windage and elevation. LOP: Length of pull. All models include a free gun lock. Not all products are available in all states and jurisdictions. Check your state and local regulations.



NEW 702 Plinkster - 25-Round Magazine
22LR // #37073



NEW 702 Plinkster
22LR // #37072



NEW 702 Plinkster - Pink Marbled
22LR // #37076



NEW 702 Plinkster - Bantam Youth
22LR // #37071



NEW 702 Plinkster - Scoped Combo
22LR // #37075



Front and rear fiber-optic sights, adjustable for windage and elevation, provide excellent target acquisition in a variety of conditions.



New synthetic stock features a stippled grip and forend; and has a thick, vented rubber recoil pad.

For hunting or plinking, you can't go wrong with our 702 Plinkster. It boasts all the features you need for a fun day of shooting, like a free-floating barrel for improved accuracy and adjustable fiber-optic front and rear rifle sights, adjustable for windage and elevation. Let the fun begin with the 702 Plinkster.

FEATURES:

- Lightweight and easy to handle, a great starter rifle
- Free-floating barrel for improved accuracy
- Fiber-optic front/rear rifle sights are adjustable for windage and elevation
- Dovetailed receiver accepts 3/8" scope mounts

MOSSBERG INTERNATIONAL 702 PLINKSTER

TYPE	ITEM #	CALIBER	CAPACITY	BARREL	TWIST	SIGHTS/SCOPE	OVERALL LENGTH	LOP	FINISH	STOCK	APPROX. WEIGHT
702 PLINKSTER											
NEW Black Synthetic	37073	22LR	25+1	18"	1:16"	Adj. FO Rifle	37"	14.25"	Blue	Synthetic (Black)	4 lbs
NEW Black Synthetic	37072	22LR	10+1	18"	1:16"	Adj. FO Rifle	37"	14.25"	Blue	Synthetic (Black)	4 lbs
NEW Pink Marble Synthetic	37076	22LR	10+1	18"	1:16"	Adj. FO Rifle	37"	14.25"	Blue	Synthetic (Pink Marble Finish)	4 lbs
NEW Youth/Bantam - Black Synthetic	37071	22LR	10+1	18"	1:16"	Adj. FO Rifle	35"	12.25"	Blue	Synthetic (Black)	4 lbs
702 PLINKSTER SCOPED COMBO											
NEW Scoped Combo - Black Synthetic	37075	22LR	10+1	18"	1:16"	Adj. Rifle, 4x Scope	37"	14.25"	Blue	Synthetic (Black)	4.5 lbs

Adj. Rifle: Rifle sights adjust for windage and elevation. LOP: Length of pull. All models include a free gun lock. Not all products are available in all states and jurisdictions. Check your state and local regulations.



ACCESSORIES

MOSSBERG



Coordinated stock, forend and recoil pad assemblies – quick-release components that allow shooters to easily switch applications – in nearly limitless combinations.

BUILD YOUR OWN. See how your shotgun will look after a FLEX conversion online with the FLEX Configurator. Mix and match parts and finishes before you buy at mossberg.com/FLEX-select/

FLEX STOCK COMPACT LOP
Black Synthetic
Compact 12.5" LOP
Medium Recoil Pad
#95223



FLEX STOCK FULL-SIZE LOP
Black Synthetic
14.25" LOP
Medium Recoil Pad
#95224



FLEX STOCK MEDIUM LOP
Black Synthetic
13.5" LOP
Medium Recoil Pad
#95226



FLEX STOCK MEDIUM LOP
Synthetic / Mossy Oak® Break-Up® Infinity™
13.5" LOP
Medium Recoil Pad
#95227



FLEX STOCK MEDIUM LOP
Synthetic / Advantage® Max-4™
13.5" LOP
Medium Recoil Pad
#95228



FLEX 4-POSITION ADJUSTABLE STOCK WITH DUAL COMB (HUNTING STYLE)

Adjustable 12.75"-14.625" LOP, Medium Recoil Pad, Interchangeable High & Low Combs for improved sightlines while using a mounted scope or sighting down the barrel.



FLEX 6-POSITION ADJUSTABLE STOCK (TACTICAL STYLE)

Adjustable 11"-14.25" LOP, Black Synthetic, oversized recoil pad. Gives users 3"+ variable length of pull for various applications – with the click of the built-in lever.



FLEX PISTOL GRIP



Black Synthetic // #95218

FLEX RECOIL PAD ASSEMBLIES

FLEX Recoil Pad Assemblies allow shooters to adjust length of pull for application-specific hunting or security needs, or to adjust for comfort.

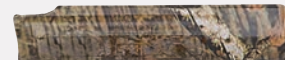


Large // #95212
1.5" Thickness
Medium // #95211
1.25" Thickness
Small // #95210
.75" Thickness

FLEX STANDARD FORENDS (FIELD STYLE)



Black Synthetic // #95214



Mossy Oak® Break-Up® Infinity™ // #95216



Advantage® Max-4™ // #95217

FLEX RAILED FORENDS (TACTICAL STYLE)

Tri-Rail Configuration, Optional Short Bottom Rail, Ambidextrous Side Touchpad Accommodation (inset), Black Synthetic



Black Synthetic // #95213



FLEX ACCESSORIES

ITEM #	DESCRIPTION/FEATURES	TYPE FINISH OR PATTERN	FITS THE FOLLOWING
FLEX RECOIL PAD ASSEMBLIES			
95210	FLEX Recoil Pad Assembly – .75" Thickness (Small)	Rubber (Black)	FLEX Standard Stocks, FLEX 4-Position Adjustable Stocks
95211	FLEX Recoil Pad Assembly – 1.25" Thickness (Medium)	Rubber (Black)	FLEX Standard Stocks, FLEX 4-Position Adjustable Stocks
95212	FLEX Recoil Pad Assembly – 1.50" Thickness (Large)	Rubber (Black)	FLEX Standard Stocks, FLEX 4-Position Adjustable Stocks
FLEX FORENDS			
95213	FLEX Tactical Forend – Railed (Extra Short Rail, Touchpad Accommodation)	Synthetic (Black)	500/590 FLEX Shotgun (12 or 20 Gauge)
95214	FLEX Standard Forend	Synthetic (Black)	500/590 FLEX Shotgun (12 or 20 Gauge)
95216	FLEX Standard Forend	Synthetic (MO Break-Up Infinity)	500/590 FLEX Shotgun (12 or 20 Gauge)
95217	FLEX Standard Forend	Synthetic (RT Adv. Max-4)	500/590 FLEX Shotgun (12 or 20 Gauge)
FLEX PISTOL GRIP & STOCKS			
95218	FLEX Pistol Grip	Synthetic (Black)	500/590 FLEX Shotgun (12 or 20 Gauge)
95219	FLEX 6-Position Adjustable Stock – 11"-14.25" LOP (Tactical Style)	Adj. Synthetic (Black), Oversized Rubber Recoil Pad	500/590 FLEX Shotgun (12 or 20 Gauge), MVP FLEX Rifle, FLEX-22 Rifle
95221	FLEX 4-Position Adjustable Stock/Dual Comb – 12.75"-14.62" LOP (Hunting Style)	Adj. Synthetic (Black), FLEX Medium Recoil Pad	500/590 FLEX Shotgun (12 or 20 Gauge), MVP FLEX Rifle, FLEX-22 Rifle
95222	FLEX 4-Position Adjustable Stock/Dual Comb – 12.75"-14.62" LOP (Hunting Style)	Adj. Synthetic (MO Bu Infinity), FLEX Medium Recoil Pad	500/590 FLEX Shotgun (12 or 20 Gauge), MVP FLEX Rifle, FLEX-22 Rifle
95223	FLEX Standard Stock – Compact 12.5" LOP	Synthetic (Black) Medium Recoil Pad	500/590 FLEX Shotgun (12 or 20 Gauge), MVP FLEX Rifle, FLEX-22 Rifle
95224	FLEX Standard Stock – Full-Length 14.25" LOP	Synthetic (Black) Medium Recoil Pad	500/590 FLEX Shotgun (12 or 20 Gauge), MVP FLEX Rifle, FLEX-22 Rifle
95226	FLEX Standard Stock – Medium 13.5" LOP	Synthetic (Black) Medium Recoil Pad	500/590 FLEX Shotgun (12 or 20 Gauge), MVP FLEX Rifle, FLEX-22 Rifle
95227	FLEX Standard Stock – Medium 13.5" LOP	Synthetic (MO Break-Up Infinity) Medium Recoil Pad	500/590 FLEX Shotgun (12 or 20 Gauge), MVP FLEX Rifle, FLEX-22 Rifle
95228	FLEX Standard Stock – Medium 13.5" LOP	Synthetic (RT Adv. Max-4) Medium Recoil Pad	500/590 FLEX Shotgun (12 or 20 Gauge), MVP FLEX Rifle, FLEX-22 Rifle

FLEX accessories are only compatible with FLEX system shotguns and MVP FLEX and FLEX-22 rifles. **Standard (Forend):** Non-railed field-style forend. **6-Position:** Tactical-style adjustable stock's length of pull is adjusted through an integrated lever. **4-Position:** Hunting style adjustable stock's length of pull is adjusted through an integrated lever. **Dual Comb:** Interchangeable high and low profile cheek pieces are included. **MO:** Mossy Oak Brand Camo. Mossy Oak, Break-Up and Infinity are registered trademarks of Haas Outdoors, Inc. **RT:** Realtree Brand Camo. Realtree, Advantage, Max-4 and Max-5 are registered trademarks of Spartan Realtree Products, Inc.

FLEX CONVERSION KITS

CONVERT YOUR EXISTING MOSSBERG OR MAVERICK SHOTGUN INTO A FLEX SHOTGUN WITH FLEX CONVERSION KITS

Available in 12 or 20 Gauge. Three Kit Configurations for converting your Mossberg 500, 590A1, or Maverick 88 shotgun: Conversion Kit for Stocks and Forends (inset), Conversion Kit for Buttstocks Only, and Conversion Kit for Stocks with FLEX Pistol Grip.

FEATURES:

- Add the flexibility of quick-change components to your existing shotgun
- Switch between hunting and security applications without tools
- Meet the needs of multiple users with a variety of stock, grip, forend, and recoil pad assembly options



TO ORDER: GO TO FLEXYourMOSSBERG.COM

BARRELS / HEAT SHIELDS / BARREL & SCOPE COMBOS



ACCESSORY BARRELS

TYPE	ITEM NUMBER	DESCRIPTION/FEATURES	GAUGE OR CALIBER	BARREL LENGTH	CHOKE	FINISH
500 & 500 FLEX™ BARRELS						
All-Purpose	90123	Vent Rib, Bead Sight	12GA	28"	Accu-Set	Matte Blue
All-Purpose	90122	Vent Rib, Bead Sight	12GA	24"	Accu-Set	Matte Blue
All-Purpose	90119	Vent Rib, Bead Sight	12GA	20"	Accu-Set	Matte Blue
All-Purpose	90130	Vent Rib, Bead Sight	12GA	28"	Accu-Set	Blue
All-Purpose	90135	Vent Rib, Bead Sight	12GA	24"	Accu-Set	Blue
All-Purpose	90140	Vent Rib, Bead Sight	12GA	20"	Accu-Set	Blue
All-Purpose	90061	Vent Rib, Bead Sight	20GA	26"	Accu-Set	Matte Blue
All-Purpose	90136	Vent Rib, Bead Sight	20GA	26"	Accu-Set	Blue
Slug	90120	Adjustable Rifle Sights	12GA	24"	Cylinder Bore	Matte Blue
Slug	90121	Adjustable Rifle Sights	12GA	24"	Fully Rifled Bore	Matte Blue
Slug	92056	Integral Scope Base/Cantilever	12GA	24"	Fully Rifled Bore	Blue
Slug	92256	Integral Scope Base/Cantilever	12GA	24"	Fully Rifled Bore	Matte Blue
Slug	92049	Adjustable Rifle Sights	12GA	24"	Fully Rifled Bore	Blue
Slug	90055	Adjustable Rifle Sights	12GA	24"	Cylinder Bore	Blue
Slug	90064	Adjustable Rifle Sights	20GA	24"	Cylinder Bore	Matte Blue
Slug	90059	Adjustable Rifle Sights	20GA	24"	Fully Rifled Bore	Matte Blue
Slug	90058	Integral Scope Base/Cantilever	20GA	24"	Fully Rifled Bore	Matte Blue
Slug	90063	Integral Scope Base/Cantilever	20GA	24"	Fully Rifled Bore	Blue
Slug	92062	Adjustable Rifle Sights	20GA	24"	Fully Rifled Bore	Blue
Slug	90060	Adjustable Rifle Sights	20GA	24"	Cylinder Bore	Blue
Security	90015	Plain, Bead Sight	12GA	18.5"	Cylinder Bore	Blue
Security	90016	Plain, Bead Sight	12GA	18.5"	Cylinder Bore	Matte Blue
Security	90017	Standoff, Bead Sight	12GA	18.5"	Cylinder Bore	Matte Blue
Security	90018	Standoff, Bead Sight	12GA	18.5"	Cylinder Bore	Blue

535 ATS™ BARRELS

All-Purpose	91301	Vent Rib, Front Bead Fiber-Optic Sight	12GA	28"	Accu-Set	MO Break-Up Country
All-Purpose	91302	Vent Rib, Front Bead Fiber-Optic Sight	12GA	28"	Accu-Set	Blue
Slug	91303	Adjustable Rifle Sights	12GA	24"	Fully Rifled Bore	MO Break-Up Country
Slug	91304	Adjustable Rifle Sights	12GA	24"	Fully Rifled Bore	Blue
Slug	91305	Integral Scope Base/Cantilever	12GA	24"	Fully Rifled Bore	MO Break-Up Country
Slug	91306	Integral Scope Base/Cantilever	12GA	24"	Fully Rifled Bore	Blue

835® ULTI-MAG® BARRELS

All-Purpose	90807	Vent Rib, Bead Sight	12GA	28"	Accu-Mag Set	MO Break-Up Country
All-Purpose	90808	Vent Rib, Bead Sight	12GA	28"	Accu-Mag Set	MO Obsession
All-Purpose	90831	Vent Rib, Bead Sight	12GA	28"	Accu-Mag Set	Matte Blue
Slug	90804	Adjustable Rifle Sights	12GA	24"	Cylinder Bore	Matte Blue
Slug	90805	Adjustable Rifle Sights	12GA	24"	Fully Rifled Bore	Matte Blue
Slug	90806	Integral Scope Base/Cantilever	12GA	24"	Fully Rifled Bore	MO Break-Up Country
Slug	90820	Integral Scope Base/Cantilever	12GA	24"	Fully Rifled Bore	Blue
Slug	92802	Adjustable Rifle Sights	12GA	24"	Fully Rifled Bore	Blue
Slug	90800	Adjustable Rifle Sights	12GA	24"	Cylinder Bore	Blue
Slug	92830	Integral Scope Base/Cantilever	12GA	24"	Fully Rifled Bore	Matte Blue

FO: Fiber-Optic. Bead: Front bead sight. Accu-Mag Set: Includes Improved Cylinder, Modified and Full choke tubes. Accu-Set: Includes Improved Cylinder, Modified and Full choke tubes. MO: Mossy Oak Brand Camo. Mossy Oak, Break-Up, and Obsession are registered trademarks of Haas Outdoors, Inc.

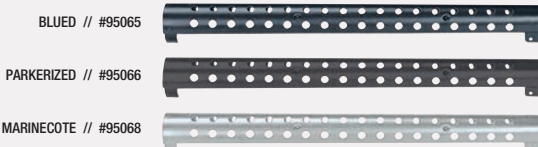
ACCESSORY BARRELS

TYPE	ITEM NUMBER	DESCRIPTION/FEATURES	GAUGE OR CALIBER	BARREL LENGTH	CHOKE	FINISH
930™ BARRELS						
All-Purpose	93019	Vent Rib, Front Bead Fiber-Optic Sight	12GA	28"	Modified	MO Break-Up Country
All-Purpose	93021	Vent Rib, Front Bead Fiber-Optic Sight	12GA	28"	Modified	Matte Blue
Turkey	93017	Vent Rib, Adjustable Fiber-Optic Sights	12GA	24"	Ulti-Full	MO Break-Up Country
Turkey	93025	Vent Rib, Adjustable Fiber-Optic Sights	12GA	24"	Ulti-Full	Matte Blue
Slug	93010	Adjustable Rifle Sights	12GA	24"	Fully Rifled Bore	Matte Blue
Slug	93030	Integral Scope Base	12GA	24"	Fully Rifled Bore	Matte Blue
Security	93020	Bead Sight	12GA	18.5"	Cylinder Bore	Matte Blue
Security	93035	Standoff, Bead Sight	12GA	18.5"	Cylinder Bore	Matte Blue
935 MAGNUM™ BARRELS						
All-Purpose	90911	Vent Rib, Front Fiber-Optic Bead Sight	12GA	28"	Accu-Mag Set	MO Break-Up Country
Slug	90912	Adjustable Rifle Sights	12GA	24"	Fully Rifled Bore	MO Break-Up Country
Slug	90913	Integral Scope Base/Cantilever	12GA	24"	Fully Rifled Bore	MO Break-Up Country
Slug	90910	Rifle Sights	12GA	24"	Fully Rifled Bore	Matte Blue
Slug	90920	Integral Scope Base/Cantilever	12GA	24"	Fully Rifled Bore	Matte Blue
REMINGTON® 870® BARRELS						
Slug	91356	Integral Scope Base/Cantilever	12GA	24"	Fully Rifled Bore	Matte Blue
Slug	91048	Adjustable Rifle Sights	12GA	24"	Fully Rifled Bore	Matte Blue
Slug	90048	Adjustable Rifle Sights	12GA	24"	Fully Rifled Bore	Blue
Slug	91330	Adjustable Rifle Sights	12GA	24"	Cylinder Bore	Matte Blue
Security	93356	Standoff, Bead Sight	12GA	18.5"	Cylinder Bore	Matte Blue
Security	90335	Plain, Bead Sight	12GA	18.5"	Cylinder Bore	Blue
Security	91335	Plain, Bead Sight	12GA	18.5"	Cylinder Bore	Matte Blue

Bead: Front bead sight. Accu-Mag Set: Includes Improved Cylinder, Modified and Full choke tubes. MO: Mossy Oak Brand Camo. Mossy Oak and Break-Up are registered trademarks of Haas Outdoors, Inc. Remington and 870 are registered trademarks of Remington Arms Company, LLC.

BARREL HEAT SHIELDS

ITEM #	DESCRIPTION	GAUGE	FOR MODELS
BARREL HEAT SHIELDS			
95065	Barrel Heat Shield - Blued Finish	12GA	500, 500 FLEX, 590 (Excludes 590A1)
95066	Barrel Heat Shield - Parkerized Finish	12GA	500, 500 FLEX, 590 (Excludes 590A1)
95068	Barrel Heat Shield - Marinecote Finish	12GA	500, 500 FLEX, 590 (Excludes 590A1)



BARREL/SCOPE COMBOS // Barrel with Integral Scope Base/Cantilever and Variable 3-9x40mm Scope

ITEM #	DESCRIPTION/FEATURES	GAUGE	BARREL LENGTH/BORE & FINISH	MODEL COMPATIBILITY
92156	500® 12GA Barrel with Integral Scope Base/Cantilever and 3-9x40mm Variable Scope	12GA	24" Fully Rifled Bore – Blued	500, 500 FLEX (12GA)
92010	500® 20GA Barrel with Integral Scope Base/Cantilever and 3-9x40mm Variable Scope	20GA	24" Fully Rifled Bore – Blued	500, 500 FLEX (20GA)
95355	535 Ats™ Barrel with Integral Scope Base/Cantilevers and 3-9x40mm Variable Scope	12GA	24" Fully Rifled Bore – Blued	535 ATS
90835	835® Ulti-Mag® Barrel with Integral Scope Base/Cantilever and 3-9x40mm Variable Scope	12GA	24" Fully Rifled Bore – Blued	835 Ulti-Mag
92356	Remington® Model 870® 12GA Barrel with Integral Scope Base/Cantilever and 3-9x40mm Variable Scope	12GA	24" Fully Rifled Bore – Matte Blue	Remington 870 (12GA)

Barrel/scope combos are compatible within model, gauge and capacity. Remington and 870 are registered trademarks of Remington Arms Company, LLC.



MOSSBERG SAFETY

MOSSBERG



Shoot Safe. Be Safe.

Safety. It's not just about protecting your home and family. It's about making sure you always handle your firearm safely and responsibly. It's why we're proud to be one of the first manufacturers to ship a free gun lock with every gun. That said, always follow these safe firearms handling rules as set by the Sporting Arms and Ammunition Manufacturers' Institute.

- 1 // Always keep the muzzle pointed in a safe direction.
- 2 // Firearms should be unloaded when not in use.
- 3 // Don't rely on your gun's "safety."
- 4 // Be sure of your target and what is beyond it.
- 5 // Use correct ammunition.
- 6 // If your gun fails to fire when the trigger is pulled, handle with care!
- 7 // Always wear eye and ear protection when shooting.
- 8 // Be sure the barrel is clear of obstructions before shooting.
- 9 // Don't alter or modify your gun, and have guns serviced regularly.
- 10 // Learn the mechanical and handling characteristics of your firearm.



Courtesy of Sporting Arms and Ammunition Manufacturers' Institute



MOSSBERG®

O.F. MOSSBERG & SONS, INC.

7 Grasso Avenue, P.O. Box 497
North Haven, CT 06473-9844

HQ: 203-230-5300

Service: 800-363-3555

MOSSBERG.COM



 SAFETY AND SAFE FIREARMS HANDLING IS EVERYONE'S RESPONSIBILITY

© 2019 O.F. Mossberg & Sons, Inc. All rights reserved. Printed in the USA.